

On the internet:

<http://espeholt.dk/mediarkiv/waae.pdf> - sorted by WaA – then Period

<http://espeholt.dk/mediarkiv/waae-a.pdf> - sorted by Object – then Period

<http://espeholt.dk/mediarkiv/waae-b.pdf> - sorted by Factory – then Period

<http://espeholt.dk/mediarkiv/waae-c.pdf> - sorted by Place – then Period

The list does not represent an exact “science”, but is based on observations of various items of equipment. I try to use only 100 percent sure observations - but mistakes are possible anyway.

2024.02.24

Das Heereswaffenamt

(From various sources: Emil Leeb: Aus der Rüstung des Dritten Reiches, Handbook on German Military Forces 1945 (US War Department), Richard D. Law: Backbone of the Wehrmacht, others)

Collectors and other observers of WWII German military artifacts, especially weapons, often see small die stamps on them with a stick figure representation of the German Reich eagle and a number. Commonly referred to as “Waffenamts”, they were inspection stamps which identified the item as being inspected and passed, at some stage of its manufacturing process for the German Army. Complex items such as firearms would have multiple Waffenamts on them. When the Nazis took power in 1933, Germany started a massive rearmament program. A part of this process was the Heereswaffenamt (He.Wa.A. – Army Ordnance Office) hereafter referred to as the HWA. The beginnings of the HWA were in the Waffen- und Munitionsbeschaffungsamt of the First World War but the Waffenamt was founded officially by orders dated Nov. 8., 1919 and renamed as Heereswaffenamt on May 5., 1922.

German weapon inspections in the factories themselves were overseen by the Heeresabnahmewesen (Army Acceptance Organization), also known as the Abnahmeabteilung des Heereswaffenamts (Wa.Abn. - Acceptance Section of Army Ordnance Office) hereafter referred to as the Abnahme. This group was a subsidiary of the HWA. The Heeres-waffenamt was headed by General der Artillerie Professor Becker until sometime in 1940, when it was taken over by General der Artillerie Emil Leeb until its end in 1945.

Starting in 1935, the HWA grew along with Germany’s growing military rearmament program. With the onset of actual military operations, the HWA was dramatically expanded as the Army’s need for equipment and weapons increased rapidly.

In 1939 the Heereswaffenamt, including the Abnahme had:

		HWA (HeWaA)	Abnahme (WaAbn)
Offiziere	(Officers)	271	71
Beamte	(Officials)	352	234
Unteroffiziere	(NCO's)	174	132
Mannschaften	(Enlisted men)	<u>2800</u>	<u>2637</u>
		3597	3074

By 1940, the Abnahme had 25.000 men (estimated – based on the 1939 distribution ratios):

Offiziere	(Officers)	577
Beamte	(Officials)	1903
Unteroffiziere	(NCO's)	1074
Mannschaften	(Enlisted men)	<u>21637</u>
		25000

During its lifetime, the HWA and the Abnahme were reorganized as German needs changed. It was also subject to staffing reversals near the end of the war, and was reorganized in 1944 and again in 1945. Manpower shortages were such in the Wehrmacht, that in the middle of 1944, 8,000 Abnahme personnel were released for front line service, which cut its total personnel by one third. In the 1940 time frame the 25,000 Abnahme inspectors were in five Departments, which had 14 regional Armament Inspectorates. The Abnahme regional offices were located in: Königsberg, Breslau, Berlin, Dresden, Hannover, Erfurt, Nürnberg, Munster, Stuttgart, Vienna, Radom, Prague, Paris, and Brussels. There may have been a few additional areas in the occupied countries, but this has not been confirmed as to number or location. There was one Abnahmeinspizient (Acceptance Inspector) in each Inspectorate area, who acted through the assigned personnel (Acceptance Commissions) at the various factories. The Abnahme themselves, because of their relatively small numbers, were oftentimes helped by specially trained factory personnel to assist them at some of the factories. The Abnahme were responsible for the testing and acceptance of all weapons, ammunition, and other items before delivery to the Wehrmacht. They were instructed on what to do by Technische Lieferbedingungen (TL's) issued by the various Waffenprüfamter sections listed below:

WaPrüf 1	Ballistische und Munitionsabteilung (Ballistics and Munitions Section of Army Ordnance [Ammunition]).
WaPrüf 2	Infanterieabteilung (Infantry Section of Army Ordnance)
WaPrüf 2 I	Rifles
WaPrüf 2 II	Machine Guns
WaPrüf 2 III	General Equipment
WaPrüf 3-12	Other Items

The inspection Officers and Officials of the Abnahme that were assigned to the various armament factories were originally Wehrmacht armourers, who were given civil service status and the rank (equivalent) of a Leutnant [W] (Waffenamt Second Lieutenant). In preparation for their duties the new personnel were sent to a four week Heereswaffenmeisterschule (Army Ordnance Armourers School) in Berlin at Spandau. At the end of the training, a Technical Inspector test was given, and if it was successfully passed the applicant became

an Oberleutnant [W] (Waffenamt First Lieutenant). By 1939 almost all of the personnel who had started in 1935 were promoted to Technical Inspector First Class with the equivalent rank of Hauptmann [W] (Waffenamt Captain). As an example of how the system worked, 98K rifle production plants had an average of ten Officials employed at each factory that made the rifle. Several Ordnance and Technical Sergeants would also be assigned to each of the rifle manufacturers, as well as the Abnahme Mannschaften, and factory helpers as needed. At Mauser Werke, a very large factory, a Technical Administrator was assigned who had the rank of a Major [W]. In some cases, the acceptance location for a given area was used by surrounding factories as well, and was called an Heeresbezirk-Abnahmestelle, (Army Area Acceptance place).



Just a curiosity: In the inner yard of HWA there is WW I memorial for the fallen members of “Artillerie-Prüfungskommission” (artillery examining board) with the statue of Saint Barbara who holds a grenade in her hand. She is the patron saint for artillerymen, miners and blasters, and she has “survived” WW2.

When a Waffenamt Officer (Acceptance Inspector) assumed command of an inspection team, he received a commission number and a corresponding numbered set of Wehrmacht-abnahmestempel (common term: Waffenamt Stamps). When the Waffenamt Officer was transferred to another factory, he took his stamps with him, but left the rest of his inspection team at the factory for the next Officer. The Waffenamt Officer in charge could move from one factory to another. Some examples are: (WaA214) at the J.P. Sauer factory in Suhl in 1938, to the Berlin Lübecker Maschinenfabriken in 1939, or (WaA63) Mauser-Werke in Oberndorf a.N. (Germany) to BRNO in Czechoslovakia in 1940. These transfers were not uncommon. The total possible Waffenamt numbers ranged from 1 to probably 999, and any gaps most likely indicate a situation where no Waffenamt Inspectorates were activated. This is reflected in the actual number of known Waffenamt (Commission) numbers.

The Waffenamt stamps (dies) themselves often varied in size and sometimes design, depending on the time period when they were made or changed out. As dies were replaced, it was often with a simpler design as time went on, but with the same Waffenamt number. The different sizes and designs reflect a number of things, such as the size of the object being stamped, or the time period the die was made, or what the maker of a particular die stamp was capable of making at that time. Sometimes when old dies wore out, or broke, and could not be replaced in time, they reused old Waffenamt die stamps after modifying them. This practice is often seen with date stamps in 1944 as well, where they show only the number "4" instead of a "44". There are also a few die stamps which have an alpha character suffix in addition to the number, such as an: A, B, C, or D. And there were specialized inspection stamps used by the German Police and Luftwaffe as well. The Police stamps did not use numbers, but alpha characters instead. (Typically, it was the Police eagle along with alpha characters such as B, C, D F, K, or L). The Luftwaffe marked items have "Luft. (number)". There may be other variations as well.



See above some examples of WaA on starter tabs (from Myrvangs book about German MG's). The two first are early types. Ink stamps were used on cloth for example – beware of fakes – and the WaA could also be etched instead of being stamped.

There currently exists no official German book on Waffenamt codes as many believe. The headquarters in Wünsdorf not so far from Berlin was heavily bombed in the spring 1944 and was completely destroyed by bombing on March 15, 1945, so no archives from the Heer-eswaffenamt exist today, either in the USA or in Germany. After the first bomb attack the whole system was severely disrupted. It continued to function, but only marginally, until the war ended. Many factories produced war material practically to the German surrender. Some of these very late items may not show Waffenamts at all. Several factories produced

weapons after the war was over, but without the Waffenamts stamps. However, there are usually other markings to differentiate them from wartime production.

Punched card. Pawlas has reprinted the so-called LK Nummern (Lochkarte – punched card numbers). The lists indicate the structure of the “Abnahme” with places and with the LK numbers – but not the die-numbers. Because of personnel shortage in the “Abnahme”-organisation, certain personnel at the factories were allowed to check the parts. This happened already in 1942, but only to a small extent. The “Betriebsabnahme” (BA) used a BA-number with 5 digits. There was also a “Werksabnahme” (W.ab) but apparently only at Telefunken. The airforce – Luftwaffe – had in the same way personnel to control parts – the so-called Bauaufsichten der Luftwaffe (BAL) – see the very last part of the list. Source: Werner Thote – Radiobote Jg. 5, Heft 29

Peter Rasmussen tells a funny story: He had about 1975 a visit by a German working for a well known German chemical company. The guest was J. G. Bayer and he had during the war inspected weapons for the Wehrmacht. Peter asked him about the function of the Waffenamts, but he answered reluctantly, because he wasn't allowed to reveal such information. Then Peter showed him a copy of the German codebook. He was chocked and said “aber das ist doch geheim” (but this is secret), and he became even more excited when he saw an enigma machine.

After such an excitement and a couple of “snaps” he became more accommodated and told that he had been a Waffenamts inspector. He had had 10 enlisted men, 2 NCO's, 1 typist and a chauffeur. The enlisted men were engineers and metal craftsmen.

They used a decrepit Opel Blitz when visiting the different factories, and sometimes they divided so one team inspected one factory and their work with one set of dies, while the rest of the group went on to another factory with the other dies. Bayer's identification was WaA27 and the whole group used that number.

Bayer's inspection team had basis in Stettin and they inspected supply for the Wehrmacht in an area in a radius about 200 kilometres from Stettin. They should sometimes inspect goods they didn't know anything about. Once a quantity of cheese. Luckily one of the NCO's father was a dairyman, so a phone call to him made it possible for the team to act quite professionally, and cheese was in a long time the main ingredient of the menu of the team.

Heereszeugamt

The armory or armory was originally a building for storing weapons and other war material (arsenal). In 1940 there were 18 military districts and military equipment offices as well as two more in the “Protectorate Bohemia and Moravia”.

From 1935 to 1945, the army equipment offices of the German Reich were subordinate to the individual commands of their respective military districts and had army equipment offices in their area.

Heereszeugämter were army departments that accepted the products produced in their military district from industry, that is, they compared the military equipment with the orders, checked the tolerances and carried out functional tests. If the product was produced

correctly, it was accepted and given an acceptance stamp. The army equipment offices tested everything from buttons to armor.

Due to the increasing shortage of workers, prisoners of war, forced laborers from Eastern Europe and concentration camp prisoners were also used in the military armories during the Second World War. Due to their outstanding importance for German front-line supplies, Anglo-American bomber units attacked army equipment offices and train stations in the respective cities in the fall of 1944 and spring 1945, for example the Mainz Army Equipment Office in September 1944, on which over 1,123 explosive bombs were dropped. Nevertheless, it was remarkable that the arms deliveries from the army armory to the fronts reached their absolute peak in December 1944 for almost all types of weapons.

You can briefly say that HZA referred to a geographical area, while WaA relates to a person and his crew - see below for an example of an HZA marking. These marks are rarely seen.



An example of using WaA

It is clear that Germany had to have a control function for the production of weapons - especially after the beginning of the war - because in many cases slave labor was used or the production was moved to occupied countries, where the workers may not be very loyal to the Nazi forces, but it seems ridiculous that was checked: tea containers, forks, spoons and as here: boot pulls up (if that's the right word).



Examples of dies

An example of an original, much used WaA die and 14 letter dies belonged to a precision engineer. The WaA number could be 539 – seen after using it on a pewter mug. The other photo shows 10 WaA-dies which have been on eBay, but the auction was canceled for some reason.



And again below an unused WaA63 stamp, also seen on eBay – and expensive. There is no WaA number on the side of the stamp.



WaA codes – WaA inspectors

The following list is made on the basis of observations from collectors both in Europe and America. It is likely that it may contain errors in some parts of it. In areas where I, or other specialists, have particular knowledge it should be relatively error free. Many of the dies used by the inspectors are very small, so it's very easy to sometimes misread the code numbers. *Please send me an E Mail, if you have detected an error in the list. Please also send me an E Mail, if you have an addition to the list. A notation of where it came from, or how certain the information is, would be appreciated.*

Phoney – cheat WaA markings

I often browse through different websides to discover some new WaA markings – especially eBay Deutschland. But beware those markings are often added lately – also because it's now so easy to buy new WaA-stamps. I will show you an example:



Only a part of the description is:

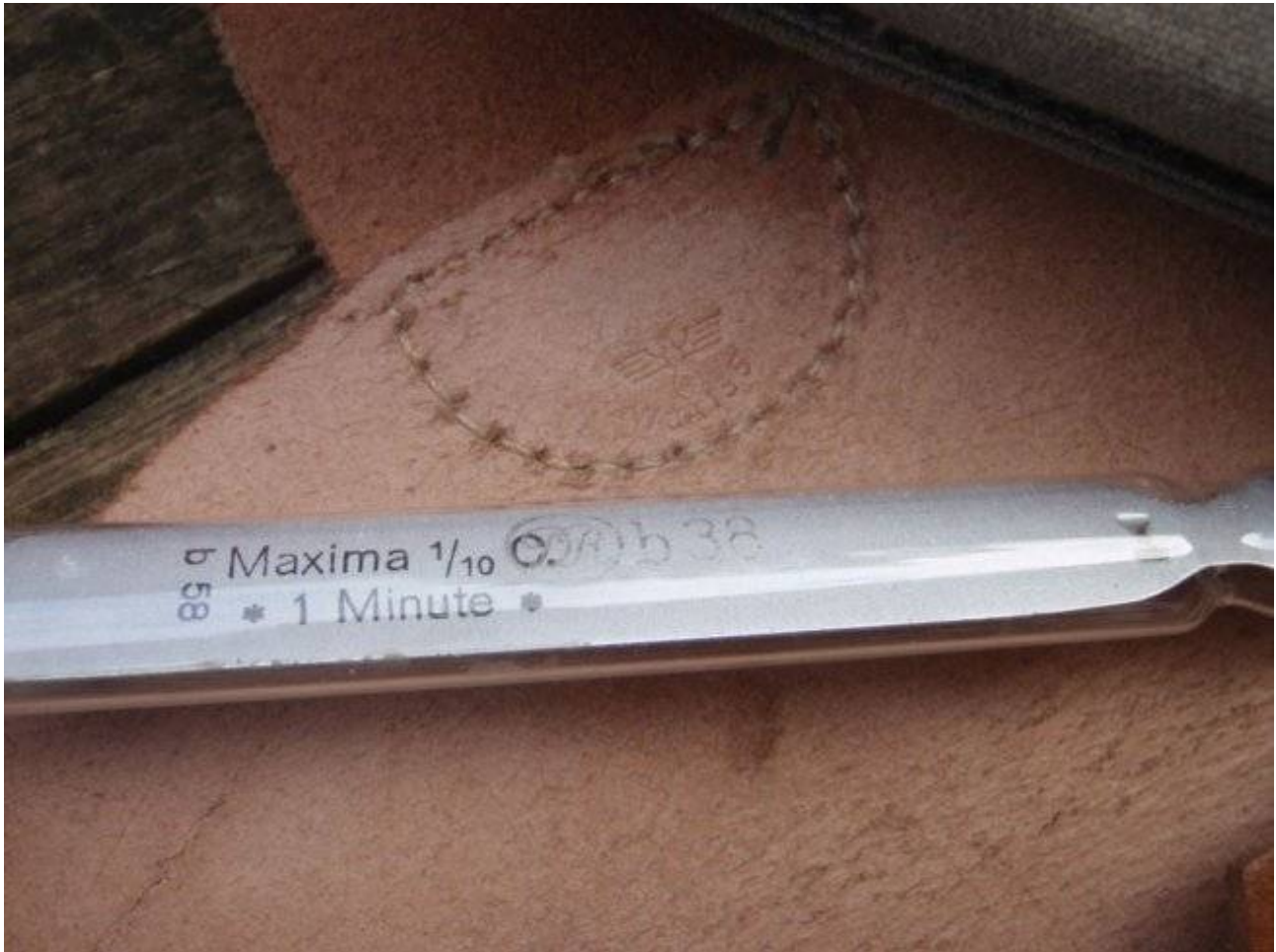
A very old magazinepouch made of leather – or was it for tools?. Maker: Max Stelzer, Berlin 1944. Eagle WaA524. Probably German Wehrmacht WW2. This find was made in an old store in an old wood chest. Script in old German type.

Below shown exactly the same pouch for a H&K G3 or perhaps a FN FAL type G1 from around 1962, and the markings are: Max Stelzer, 68, Berlin, P Pr Bln (Polizei Präsident Berlin)



It's also tempting to put an extra bird on genuine parts for example on a K98k sling. That will boost the price. Be distrustful of ink WaA-markings. They are easily faked. The same can be said about WaA-markings in soft leather.

Below a pouch for medical instruments. The instruments are genuine, the pouch is possibly genuine, but the WaA-marking is made a long time after the war:



• _____ •

If practicable, names and addresses are taken from the outstanding German codebook: "Liste der Fertigungskennzeichen". Names of towns are given with their WWII time period German names. That means that some of the names will not be found on modern post war maps. For example: Brunn = Brno in Czeckia and Lüttich = Liege in Belgium.

In connection with non German places two letters are mentioned. These letters are the country codes according to the Internet standard:

AT	Austria
BE	Belgium
CZ	Czech Rep.
DK	Denmark
ES	Spain
IT	Italy
FR	France
HU	Hungary
LV	Latvia

NL	Holland
NO	Norway
PL	Poland
RU	Russia
SK	Slovakia

German places – in die Bundesrepublik to day – are indicated with an abbreviation for one of the “Bundesländer”:

Bb	Brandenburg
Be	Berlin
BW	Baden-Württemberg
By	Bayern
Hb	Bremen
He	Hessen
Hh	Hamburg
MV	Mecklenburg-Vorpommern
Ni	Niedersachsen
NW	Nordrhein-Westfalen
RP	Rheinland-Pfalz
SH	Schleswig-Holstein
Sl	Saarland
Sn	Sachsen
SA	Sachsen-Anhalt
Th	Thüringen

Abbreviations of objects:

bay.	bayonet
Ber.	Beretta
Brng.	Browning
cln. kit	cleaning kit
el. equipm.	electrical equipment
flrgn.	flare gun
gren.	grenade
hol.	holster
mag.	magazine
mag. po.	magazine pouch
meas. instr.	measuring instrument
mu. co.	muzzle cover
pist.	pistol
rec.	receiver
rew.	reworked
Wal.	Walther

Special credits to: Peter Rasmussen, Denmark, David Franchi, California, Joe R. Steen, Texas, Michael Heidler, Germany, András Hatala, Jirí Lukes, Czech Republic + Brian Conkle, California for the Introduction

Claus Espeholt,
 Humlevej 44
 8500 Grenaa
 Denmark
claus@espeholt.dk

WaA	Code	Object	Factory	Place	Name	Period
A99			org. stamp exists			
Marine M			Polte	Magdeburg (SA)		1937
14	jme		Armeemarinehaus	Charlottenburg (Be)		1941 – 42
18			A. Wunderlich	Berlin (Be)		1927
18			G. Reinhardt	Berlin (Be)		1937
19	WwSu		Westfälische Waffenfabrik			
41	gut		W. Schürmann	Bielefeld (NW)		
42			Gebr. Klinge	Dresden (Sn)		1936
42			C. Heinichen	Dresden (Sn)		1937
47	erg		A. Döppert	Kitzingen (By)		1940
53			org. stamp exists			
64	P223		Sächsische Metallwarenfabrik	Aue (Sn)		1939
76	oub		J. Jelinek	Gross-Meseritsch (CZ)		
77	S/27, 27		Erma und Geipel	Erfurt (Th)		1938
94			Otto Sindel	Berlin (Be)		
100			G. Genschow	Berlin (Be)		1939
100			Curt Vogel, Lederwarenwerk	Cottbus (Bb)		1939
101	cdg		Auwaerter und Bubeck	Stuttgart (BW)		1940 – 41
102			Carl Ackva	Bad Kreuznach (RP)		1934
107			Auwaerter und Bubeck	Stuttgart (BW)		1934

108			Carl Heinichen	Dresden (Sn)		1934
112			G. Genschow	Berlin (Be)		1936
121			Karl Barth	Waldbröhl (NW)		1939
127 727?	DLU, dlu		E. Lüneschloss	Solingen (NW)		1940 – 41
135	bmo		Hans Deuter	Augsburg (By)		1939
136			Hans Deuter	Augsburg (By)		1934
138	cny		C. Pose	Berlin (Be)		
142	ffr		E. Thielenhaus	Wuppertal (NW)		1941
145	jln		Deutsche Leder- werkstätten	Pirmasens (RP)		1942 – 43
154	erg		A. Döppert	Kitzingen (By)		1942
161 101?	cdg		Auwaerter und Bubeck	Stuttgart (BW)		1940
163	joa		Carl Heinichen	Dresden (Sn)		1941
173	jhv		Metallwaren- Waffen-u. Mf.	BudaPest (HU)		1941 – 44
179	jkh		Carl Busse	Mainz (RP)		
181	E&G					1936
190			Auwaerter und Bubeck	Stuttgart (BW)		1939
194			Matra	Frankfurt (He)		1937
195	dla		Karl Barth	Waldbröhl (NW)		1939 – 44
204			Hohmann	Kaiserslau- tern (RP)		
234			Franz u. Karl Voegels	Köln (NW)		1936
277			Julius Pintsch	Berlin (Be)		
279	dtu		G. J. Entsink	Ohrdruf (Th)		1941
286			Carl Busse	Mainz (RP)		1939
289?	Cww		Carl Weiss	Braun- schweig (Ni)		1942
300			Franz u. Karl Voegels	Köln (NW)		1937
330			A. Waldhausen	Köln (NW)		1937
337			G. Genschow	Berlin (Be)		1936
337			Franz u. Karl Voegels	Köln (NW)		1936
360			DWM	Lübeck- Schlutup (SH)		

373	climbing iron for poles					1940
377			Werk Magirus	Ulm (BW)		
387	eqf		Karl Böcker	Waldbröhl (NW)		1936
387			F. u. K. Voegels	Köln (NW)		1936 – 40
387	ewx		Franz u. Karl Voegels	Köln (NW)		1941
392	cww		Carl Weiss	Braun- schweig (Ni)		
400			Schultz	Augsburg (By)		1939
400	acb		Rheinisch-West- fälisches Kunst- stoffwerk	Kettwig (NW)		1944
403				(CZ)		
416			Kimnack & Brunn	Kaiserslau- tern (RP)		1939 – 40
416	hjj		Kimnack & Brunn	Kaiserslau- tern (RP)		1941
416	jln		Deutsche Leder- werkstätten	Pirmasens (RP)		1941
455			Hans Römer	Neu-Ulm (By)		1937
455			Henseler und Co.	Neu-Ulm (By)		1939
588			org. stamp ex- ists			
623				Radom (PL)		
640	bmd		Max Müller	Nürnberg (By)		1941 – 42
640	erg		A. Döppert	Kitzingen (By)		1941 – 42
640			H. D.			1942
668			R. Reinhardt	Pössneck (Th)		1941
668	jhz		Jean Weipert	Offenbach (He)		1941 – 42
669			org. stamp exists			
673			org. stamp exists			
691			Daimler-Benz	Sindelfingen (BW)		1940
707	joa		Carl Heinichen	Dresden (Sn)		1934

727	jhg		G. Genschow	Altstadt-Hachenburg (RP)		
727	dlu, DLU		E. Lüneschloss	Solingen (NW)		1940 – 41
727	cxb		Joseph Moll	Goch (NW)		1940 – 42
749	bcd		Gustloff-Werke	Weimar (Th)		1941 – 45
750	cww		Carl Weiss	Braunschweig (Ni)		1937, 39 – 42
750			J	Braunschweig (Ni)		1939
750	eqr		G. Passier	Hannover (Ni)		1939, 41 – 42
780	bwo		Rheinmetall-Borsig	Düsseldorf (NW)		
788	gxy		Gebr. Klinge	Dresden (Sn)		1939
788			Hengeler und Co.	Berlin (Be)		1939
834			Nürnberger Schraubenfabrik	Nürnberg (By)		1941
869	gca		Mylau GmbH	Mylau (Sn)		1941
869	gut		W. Schürmann	Bielefeld (NW)		1941 – 42
887	gmh		Carl Steppuhn	Elbing/Frisches Haff (PL)		1942
918	bml		Hans Römer	Neu-Ulm (By)		1941 – 42
103	bmo		Hans Deuter	Augsburg (By)	Etzel	
103			F. N.	Lüttich (BE)	Etzel	May 41 – Dec 41
27	dlv		Deut. Edelstahlwerke	Reimscheid (NW)	J.G. Bayer	1941
4			Otto Sindel	Berlin (Be)	Kirschke	1934
C6	kfk		Dansk Industri Syndikat	Kopenhagen, (DK)	Rupert	
C6				(DK)	Rupert	
107			Hans Römer	Neu-Ulm (By)	see 101	1936
613			F. N.	Lüttich (BE)	Tennert	sep40 – apr41
140			F. N.	Lüttich (BE)	Zorn	1942 – 44

210		(bakelite battery case)				
26		.22 KKW rifle	Gustav Genschow	Berlin (Be)		1937
157	wg	1,3 cm ammo	Hugo Schneider	Altenburg (Th)		1943
172	avu	1,3 cm ammo	Silva Metallwerke	Genthin (SA)		1940
Luft 54	wg	1,3 cm case, 2 cm case	HASAG	Altenburg (Th)		1942 – 43
Luft 61	eds	1,3 cm fuse	Zündapp	Nürnberg (By)		1943
Luft 84	bjl	1,3 cm gren.	Stumpp & Kurz	Vaihingen/Enz (BW)		1943
66	edq	1,5 cm ammo	D. W. M.	Lübeck-Schlutup (SH)		1942
104	CA	1,5 cm ammo				1940
161	am	1,5 cm ammo	Gustloff-Werke	Hirtenberg (AT)		1943 – 44
71	dov	1,5 cm ammo, art. fuse	Waffenwerke Brünn	Wsetin (SK)		1942 – 44
Marine M II/5		1,5 cm case M38 Flak				1942
22	P216	10,5 cm ammo	Langbein-Pfannhauser	Leipzig (Sn)		1937
22	P181	10,5 cm ammo	HASAG	Leipzig (Sn)		1939
23	P319	10,5 cm ammo	Maschinen für Massenverpackung	Lübeck-Schlutup (SH)		1936
75	P	10,5 cm ammo	Polte	Magdeburg (SA)		1933
124	P58	10,5 cm ammo	Ehrich & Graetz	Berlin (Be)		1939
124	ast	10,5 cm ammo	Joh. Hauff	Lichtenberg (Be)		1941
244	P90	10,5 cm ammo	Bergmann Elektr. Werke	Wilhelmsruh (Be)		1936
406	P	10,5 cm ammo	Polte	Magdeburg (SA)		1936 – 37
58	P425	10,5 cm case	Collis Metallwerke	Westhausen Aalen (BW)		1937

120		10,5 cm case				1945
421	P218	10,5 cm case howitzer 18/40	Benteler-Werke	Bielefeld (NW)		1937
64	ya	10,5 cm grenade	Sächsische Metallwarenfabrik	Aue (Sn)		1943
65	bzs	10,5 cm grenade	Witkowitz Bergbau- u. Eisenhütten Gewerkschaft	Witkowitz (CZ)		1944
Marine M II/5	P131	10,5 cm gun case	DWM	Berlin (Be)		1940
Marine M II/1	aux	10,5 cm gun case	Polte	Magdeburg (SA)		1941
709		12,5 kg explosives				1941
276	P131	14,9 cm ammo	D. W. M.	Borsigwalde (Be)		1936
Marine M V/2	15A	15 mm ammo	Waffenwerke Brünn	Wsetin (CZ)		1940
717	15A	15 mm ammo	Waffenwerke Brünn	Wsetin (CZ)		1940
606		18 mm tool				
C6		1910/21 Bergmann rew. pist.		(DK)	Rupert	
279	dtv	1922 Brng.hol. PP hol.	C. O. Gehrckens	Pinneberg (SH)		1940 – 42, 44
251		1935A French pist. #550 and up	Société Alsacienne de Constructions Mécaniques (SACM) (see 655)	(FR)		1941 – 44
655		1935A French pist. (first 550)	S. A. C.M. (see 251)	(FR)		1940
406	P	2 – 7,5 – 8,8 cm ammo	Polte	Magdeburg (SA)		1938
767	eej	2 cm case	Märkisches Walzwerk	Strausberg (Bb)		1942, 44
A10	wa	2 cm ammo	HASAG	Leipzig (Sn)		1941, 44

B35	wg	2 cm ammo	HASAG	Altenburg (Th)		1945
22	P181	2 cm ammo	HASAG	Leipzig (Sn)		1936 – 39
84	P181	2 cm ammo	HASAG, Hugo Schneider	Leipzig (Sn)		1940
102		2 cm ammo	HASAG	Skarzysko (PL)		1941
174	P154	2 cm ammo	Polte, Werk Grüneberg			1940
175	act	2 cm ammo	A. Ruhfus	Neuss/Rhein (NW)		1944
223	P315	2 cm ammo	Märkisches Walzwerk	Strausberg (Bb)		1936
427		2 cm ammo				1936
700	P	2 cm ammo	Polte	Magdeburg (SA)		1939
763	P397	2 cm blank ammo	Meta Metallwerk	Arnstadt (Th)		1940
Luft 66	edq	2 cm cartridge	DWM,	Lübeck (SH)		1942
Luft 66	tko	2 cm cartridge	DWM,	Lübeck (SH)		1945
51	P341	2 cm case	August Enders	Oberrahmede (NW)		1935
54	BK	2 cm case				1940
54	wg	2 cm case	Hugo Schneider	Altenburg (Th)		1941
59	P419	2 cm case	Christ Co.	Grünberg, Silesia (PL)		1939
73	avu	2 cm case	Silva Metallwerke	Genthin (SA)		1943
Luft 75		2 cm case	BS			1940
86	edq	2 cm case	D. W. M.	Lübeck-Schlutup (SH)		1943
Luft 130	exw	2 cm case	Metallwerk Holleischen	Mies (CZ)		1943
151		2 cm case				1942
152	wb	2 cm case	Hugo Schneider	Köpenick (Be)		1942
161	eev	2 cm case	Fr. Braun	Tambach-Dietharz (Th)		
201	P490	2 cm case	Hugo Schneider	Altenburg (Th)		1939 – 40
211	asr	2 cm case	HAK	Hamburg (Hh)		1942

231	P414	2 cm case	Silva Metallwerke	Magdeburg – Neustadt (ST)		1937 – 38
232	P120	2 cm case	Dynamit AG	Hannover-Empelde (Ni)		1937 – 39
232	emp	2 cm case	Dynamit AG	Hannover-Empelde (Ni)		1943 – 44
251	414	2 cm case	Silva-Metallwerke	Magdeburg (SA)		1938
271	rrm	2 cm case	HAK – Hanseatisches Kettenwerk	Hamburg (Hh)		1945
285	P327	2 cm case	Orga AG	Nürnberg (By)		1940
294	P490	2 cm case	Hugo Schneider	Altenburg (Th)		1940
321	P414	2 cm case	Silva Metallwerke	Magdeburg-Neustadt (SA)		1939
329	P382	2 cm case	Hanseatisches Kettenwerk	Hamburg (Hh)		1937, 39, 40
339	P198	2 cm case	Metallwarenfabrik Treuenbitzen	Roederhof (Bb)		1939 – 40
372	fb	2 cm case	Mansfeld AG	Rothenburg/Saale (SA)		1942
428		2 cm case				
463	avt	2 cm case	Silva Metallwerke	Magdeburg – Neustadt (SA)		1944
468	P414	2 cm case	Silva-Metallwerke	Magdeburg (Sn)		1940
687	eeo	2 cm case	DWM	Posen (PL)		1943
836	va	2 cm case	Kabel- und Metallwerke Neumeyer	Nürnberg (By)		1941 – 44
836	wg	2 cm case	HASAG	Altenburg (Th)		1944
852	va	2 cm case	Kabel – und Metallwerke Neumeyer	Nürnberg (By)		1944
271	asr	2 cm case – 2,5 cm case	HAK – Hanseatisches Kettenwerk	Hamburg (Hh)		1942
468	avt	2 cm case?	Silva-Metallwerke	Magdeburg (Sn)		1942

357	dkr	2 cm Flak	Henschel	Kassel (He)		1942
495	567	2 cm Flak	Havelwerk	Brandenburg (Bb)		1940
A44	cdm	2 cm Flak 38	Torpedo-Werke	Frankfurt (He)		
107	dfb	2 cm Flak 38 firing pin	Wilhelm-Gustloff-Werke	Suhl (Th)		
5		2 cm Flak 38 part				
107	P	2 cm Flak case	Polte	Magdeburg (SA)		1936
280		2 cm Flak mag.	Olympia Büro-maschinen-werke	Erfurt (Th)		1939
706	eqb	2 cm Flak mag.	Böhme & Henne	Dresden (Sn)		1942
647	brc	2 cm Flak magazine	Fr. Weber & Co.	Berlin (Be)		
288	cpj	2 cm Flak parts	Havelwerk	Brandenburg (Bb)		
313	ab	2 cm Flak parts	Mundlos AG	Magdeburg (SA)		
706		2 cm Flak wooden ammo crate	O. B.			1939
868	ark	2 cm Flak38 part	Benteler Werke	Bielefeld (NW)		1942
39	cbj	2 cm fuse	Wagner	Pforzheim (BW)		1943 – 44
53	coc	2 cm fuse	MAN	Augsburg (By)		1944
97	azg	2 cm fuse	Siemens-Schuckert	Berlin (Be)		1944
Luft 112		2 cm fuse				1942
145		2 cm fuse				1944
196	eds	2 cm fuse	Zündapp	Nürnberg (By)		1943
220	cxk	2 cm fuse	Kontaktwerk Josef Bühler	Freiburg (BW)		1943 – 44
244	arl	2 cm fuse	Bergmann Elektr. Werke	Wilhelsruh (Be)		1942
288	czs	2 cm fuse	Brennabor Werke	Brandenburg (Bb)		1943 – 44
334	enl	2 cm fuse	AEG Allg. Elektrizitäts-gesellschaft	Henningsdorf (Bb)		1944

581	pzc	2 cm fuse				
596	exs	2 cm fuse	Sils van de Loo	Hameln (Ni)		1943
600	gld	2 cm fuse	Butzke-Werke	Berlin (Be)		1943
622	bzz	2 cm fuse	I. G. Farbenindustrie	München (By)		1943
787	eej	2 cm fuse	Märkisches Walzwerk	Strausberg (Bb)		1943
910	wa	2 cm fuse	Hugo Schneider	Leipzig (Sn)		1941 – 42
43	asb	2 cm fuse, 7,5 cm ammo	D. W. M.	Borsigwalde (Be)		1944
Luft 65	dgl	2 cm gren.	Louis Ziegel	Sonnenberg (Th)		1945
B43	aye	2 cm mag.	Olympia Büromaschinenwerke	Erfurt (Th)		1944
145	bdk	2 cm mag.	Schneiderwerke, St. Ingbert	Saar (Sl)		1944
280		2 cm mag.	Stubgen	Erfurt (Th)		1939
488	ayd	2 cm mag.	Fr. Stübgen	Erfurt (Th)		
495	sxk	2 cm mag.				
A10	wa	2 cm magazine	HASAG	Leipzig (Sn)		1943
64	ets	2 cm magazine	Ernst Hecker	Aue (Sn)		
288	sxk	2 cm magazine				
542	cjs	2 cm magazine	Kallenbach	Luckenwalde (Bb)		
4	dfb	2 cm magazine	Gustloff-Werke	Suhl (Th)	Kirschke	
170	bdk	2 cm magazine box	Schneiderwerke, St. Ingbert	Saar (Sl)		1942
300	bdk	2 cm magazine box	Schneiderwerke, St. Ingbert	Saar (Sl)		1942
Luft 70	edt	2 cm primer	Metallwarenfabrik	Zella-Mehlis (Th)		1942
Luft 165	wc	2 cm primer	HASAG	Altenburg (Th)		1942 - 43
Luft 185	eep	2 cm primer	Brökelmann	Neheim-Hüsten (NW)		1942
Luft 190	edw	2 cm primer	Karl Metzler	Iserlohn (NW)		1942
354		2 cm werkzeugpatrone	Polte	Magdeburg (SA)		

354	hac	2 cm werk- zeug pat- rone	Otto Schulz	Berlin (Be)		1942
406	P	2,0 cm ammo	Polte	Magdeburg (SA)		1937
71	asf	2,5 cm case	Ehrich & Graetz	Berlin (Be)		1942
Marine M III/3	auz	20x138 cannon ammo	Polte	Arnstadt (Th)		1944
Marine M III/3	ckq	20x138 cannon case	Rasselsteiner Eisenwerk	Rasselstein / Neuwied (RP)		1944
325		2cm Flak part				
607	P14A	3,7 – 4,7 – 10 and 15 cm ammo	Waffenw. Brünn	Bystrica (SK)		1939 – 40
21	P152	3,7 cm ammo	Württem- bergische Metallwarenfab- rik	Geislingen – Steige (BW)		1936 – 39
62	P263	3,7 cm ammo	Vereinigte Herd & Ofenfabrik	Hamm/Westf. (RP)		1940
73	P345	3,7 cm ammo	Silva Metallwerke	Genthin (SA)		1938 – 39
73	avu	3,7 cm ammo	Silva Metallwerke	Genthin (SA)		1944
75	P	3,7 cm ammo	Polte	Magdeburg (SA)		1930
87	P370	3,7 cm ammo	Hugo Schneider	Berlin (Be)		1940
107	P	3,7 cm ammo	Polte	Magdeburg (SA)		1935
126		3,7 cm ammo				
244	S90	3,7 cm ammo	Bergmann Elektr. Werke	Wilhelmsruh (Be)		1937
314	gfa	3,7 cm ammo	Otto Fuchs, Me- tallwerke	Meinerzha- gen (NW)		
357	aux	3,7 cm ammo	Polte	Magdeburg (ST)		
406	P	3,7 cm ammo	Polte	Magdeburg (SA)		1935, 1936, 38
907		3,7 cm ammo				1942

183	ewg	3,7 cm ammo clip	Franke	Mühlhausen (Th)		1944
Marine M III/7	aeu	3,7 cm case	Metall u. Eisen	Nürnberg (By)		1941
174	P154	3,7 cm case	Polte, Werk Grüneberg			1935, 1938 – 39
225	P199	3,7 cm case	Monheimer Ketten- u. Metallwarenindustrie	Monheim (NW)		1936
225	bwo	3,7 cm case	Rheinmetall-Borsig	Düsseldorf (NW)		1942
294	P345	3,7 cm case	Silva-Metallwerke	Genthin-Liesewald (SA)		1936
321	P222	3,7 cm case	Sils van de Loo & Co.	Fröndenbergl (NW)		1937
329	P382	3,7 cm case	Hanseatisches Kettenwerk	Hamburg (Hh)		1937
665	P456	3,7 cm Flak ammo	Metall un. Eisen	Nürnberg (By)		1939 – 40
Marine M III/3	P397	3,7 cm Flak case	Meta Metallwerk	Arnstadt (Th)		1940
Marine M I/e		3,7 cm fuse				1940
Marine M III/7	eds	3,7 cm fuse	Zündapp	Nürnberg (By)		1942
514	qwm	3,7 cm fuse				1945
Marine M I/3	ean	3,7 cm grenade	Lippstädter Eisen u. Metallwerke	Lippstadt (NW)		1941
230	DL227	3,7 cm grenade part	Nähmatag	Radebeul (Sn)		1936
352	DL609	3,7 cm grenade part	Richard Stock & Co.	Güntersberge (SA)		1938
354		3,7 Flak18 case				
707	S/270	3,7 PAK ammo	H. Diehl	Nürnberg (By)		1936
270	arx	4 cm case	Collis Metallwerke	Westhausen, Aalen (BW)		1941
56	jkg	4 cm case, clip, Flak 28 clip	Ung. Eisen-Stahl- und Maschinenfabriken	BudaPest (HU)		1941
Marine M III/5	eom	4 cm M38 cannon case	Heinrich Huck	Nürnberg (By)		1944

66	hko	4 cm quick-loader	Matthias Oechsler	Ansbach (By)		1941
Marine M I/d	P	40,6 cm Adolf ammo	Polte	Magdeburg (SA)		1936
337	va	5 cm ammo	Kabel- und Metallwerke Neumeyer	Nürnberg (By)		1944
780	amp	5 cm ammo	Dortmund-Hörder Hüttenverein	Dortmund (NW)		1944
141		5 cm armor grenade				1941
700	P	5 cm, 8,8 cm ammo	Polte	Magdeburg (SA)		1939
361	117B	50 kg bomb				1939
Marine M I/6	ksb	6 cm launching tube	Manufacture Nationale d'Armes de Levallois	Paris (FR)		
Marine M I/?	ksb	6 cm signal mortar	Manufacture Nationale d'Armes de Levallois	Paris (FR)		
262		6x30 field-glass	Carl Zeiss	Jena (Th)		
75	P	7,5 cm ammo	Polte	Magdeburg (SA)		
392	bnf	7,5 cm ammo	Metallwerk Wolfenbüttel	Braunschweig (Ni)		1944
412	P341	7,5 cm ammo	August Enders	Oberrahmede (NW)		1937
556	P397	7,5 cm ammo	Meta Metallwerk	Arnstadt (Th)		1939
556	wa	7,5 cm ammo	Hugo Schneider	Leipzig (Sn)		1944
8		7,5 cm ammo container	K&H NKF			1934
18	gpy	7,5 cm cannon part	Clemens Müller AG	Dresden (Sn)		
727	lms	7,5 cm cannon part	Theodor Kiepe	Düsseldorf (NW)		1943
60	P131	7,5 cm cart.	D. W. M.	Borsigwalde (Be)		1935
717		7,5 cm Dutch case				1940
89		7,5 cm hollow round				

656		7,5 cm primer				1939
A10	wa	7,5, 8,8 cm ammo	HASAG	Leipzig (Sn)		1942
938	logo	7,65 pist. Hol.	Christoph Neuner	Klagenfurt (AT)		1943
201	BK	7,9 mm B-Patr.	Hugo Schneider	Altenburg (Th)		1940
731		8 cm mortar				1941
691		8 cyl. Horch	Auto Union	Siegmar (Sn)		1940
648	P315	8 mm AT ammo + 2 cm ammo	Märkisches Walzwerk	Potsdam (Bb)		1939
131	Rh.S. 705	8,8 – 10,5 cm primer	Gerätebau GmbH	Mühlhausen (Th)		1939
21	qls	8,8 ammo				1945
190	asx	8,8 ammo case	Hoesch AG	Dortmund (NW)		1942
190	awa	8,8 ammo part	Schmiedag	St. Andreasberg (Ni)		1942
43	P131	8,8 cm ammo	D. W. M	Borsigwalde (Be)		1938
354	ava	8,8 cm ammo	Polte	Magdeburg (SA)		1941
579	P94	8,8 cm ammo	Kabel und Metallwerk Neumeyer	Nürnberg (By)		1938
806	aty	8,8 cm ammo	Maschinen für Massenverpackung	Lübeck-Schlutup (SH)		1941
A30	dou	8,8 cm case	Waffenw. Brünn	Bystrica (SK)		1944
A80	?zs	8,8 cm case				1944
58		8,8 cm case				1941
258	P94	8,8 cm case	Kabel- u. Metallwerke Neumeyer	Nürnberg (By)		1936
360	P319	8,8 cm case	Maschinen für Massenverpackung	Lübeck-Schlutup (SH)		1939
374	P150	8,8 cm case	Julius Pintsch KG	Werk Fürstenwalde / Spree (Bb)		1938, 40
374	auv	8,8 cm case	Julius Pintsch KG	Werk Fürstenwalde / Spree (Bb)		1941

387	eeo	8,8 cm case	D. W. M	Posen (PL)		1942 – 44
455	fqq / kzo	8,8 cm case	Dillinger Hüttenwerke	Dillingen (SI)		1943 – 44
838	ck	8,8 cm case	Kabel- u. Metallwerk Neumeyer	München (By)		1943
509		8,8 cm Flak primer	Rheinische Metallwarenfabrik	Sömmerda (Th)		1938
Marine M IV/2	gja	8,8 cm fuse	Nähmaschinenfabrik AG	Dresden (Sn)		1944
Marine M III I 1	bmv	8,8 cm fuse	Rheinmetall-Borsig	Sömmerda (Th)		
225	rdf	8,8 cm gren.	WASAG	Reinsdorf (Sn)		1943
227	rdf	8,8 cm gren. parts	WASAG	Reinsdorf (Sn)		1939
34	bve	8,8 cm grenade	Carl Weinberger	München (By)		
265		8,8 cm grenade				
276		8,8 cm grenade				
711		8,8 cm grenade part				
Marine M III/2		8,8 cm gun timer				1939
809	jua	8,8 cm igniter	Danuvia	Budapest (HU)		1943
270	arx	8,8 cm? case	Collis Metallwerke	Westhausen, Aalen (BW)		1943
107	P	8,8, 14,9 cm ammo	Polte	Magdeburg (SA)		1935 – 36
C11	fva	8x33 ammo	Draht und Metallwarenfabrik	Salzwedel (SA)		1944 – 45
C11	fva	8x57JS ammo	Draht und Metallwarenfabrik	Salzwedel (SA)		1943
214	S/178	98 bay	Gebr. Heller	Marienthal (Th)		1936 – 37
253	S/174	98 bay	WKC	Solingen (NW)		1935 – 37
5	omc	98 bay.	Maschinenhaus der Büchsenmacher	Ferlach (AT)		1939

22	S/173	98 bay.	A. Coppel	Solingen (NW)		1934
25	ddl	98 bay.	Josua Corts	Remscheid (NW)		1943 – 44
37		98 bay.	Gebr. Heller	Marienthal (Th)		1939 – 40
62	S/155	98 bay.	F. u. K. Hörster	Solingen (NW)		1934
62	S/172	98 bay.	Eickhorn	Solingen (NW)		1934
62	S/178	98 bay.	Heller	Marienthal (Th)		1935
62	S/239	98 bay.	Rich. Herder	Solingen (NW)		1935
68	S/155	98 bay.	E. u. F. Hörster	Solingen (NW)		1934
68	S/242G	98 bay.	Solinger Axt u. Hauerfabrik	Solingen-Ohligs (NW)		1935
73	S/178K	98 bay.	Gebr. Heller	Marienthal (Th)		1934
73	S/178G	98 bay.	Gebr. Heller	Marienthal (Th)		1935
77	S/174G	98 bay.	WKC	Solingen (NW)		1935
77	S/175G	98 bay.	F. W. Höller	Solingen (NW)		1935
82	S/173K	98 bay.	A.Coppel	Solingen (NW)		1934
88	S/177K	98 bay.	Pack u.Söhne	Solingen (NW)		1934
95	S/155K	98 bay.	E. u. F. Hörster	Solingen (NW)		
95	S/184	98 bay.	Josua Corts	Solingen (NW)		1936
117	S/155G	98 bay.	E. u. F. Hörster	Solingen (NW)		1935
118	S/173	98 bay.	Coppel	Solingen (NW)		1935
118	S/177	98 bay.	Pack u. Söhne	Solingen (NW)		1935
138	S/239	98 bay.	Herder	Solingen (NW)		1935
155	S/245	98 bay.	Jetter u. Scherer	Tuttlingen (BW)		1936 – 38
155		98 bay.	J. Sch.			1937 – 39

216	S/185	98 bay.	Elite Diamantwerke	Chemnitz (Sn)		1936
218	S/185	98 bay.	Elite Diamantwerke	Chemnitz (Sn)		1937
218		98 bay.	Elite Diamantwerke	Chemnitz (Sn)		1937 – 40
218	i	98 bay.	Elite Diamantwerke	Chemnitz (Sn)		1941
219	S/242	98 bay.	Solinger Axt u. Hauerfabrik	Solingen (NW)		1936 – 37
220	S/178G	98 bay.	Gebr. Heller	Marienthal (Th)		1935
229	S/238	98 bay.	Dürkopp-Werke	Bielefeld (NW)		1935 – 36
243		98 bay.	Mundlos AG	Magdeburg (SA)		1938 – 39
243	ab	98 bay.	Mundlos AG	Magdeburg (SA)		1941, 42
250		98 bay.	F. Herder	Solingen (NW)		1937
253	S/173	98 bay.	A. Coppel	Solingen (NW)		1936
253	S/176	98 bay.	Weyersberg	Solingen (NW)		1936
253	S/178	98 bay.	Gebr. Heller	Marienthal (Th)		1936
253	S/175	98 bay.	Höller	Solingen (NW)		1936 – 37
253	S/242	98 bay.	Solinger Axt u. Hauerfabrik	Solingen (NW)		1936 – 37
253	S/155	98 bay.	E. u. F. Hörster	Solingen (NW)		1937
253		98 bay.	Berg & Co.	Solingen (NW)		1937 – 39
253		98 bay.	Josua Corts	Remscheid (NW)		1937 – 39
253		98 bay.	E. u. F. Hörster	Solingen (NW)		1937 – 40
253		98 bay.	F. Herder	Solingen (NW)		1937 – 40
253		98 bay.	Carl Eickhorn	Solingen (NW)		1937 – 40
253		98 bay.	WKC	Solingen (NW)		1937, 38, 40
253		98 bay.	Ernst Pack u. Söhne	Solingen (NW)		1937, 39, 40

253		98 bay.	A. Coppel	Solingen (NW)		1937, 39, 40
253	S/172	98 bay.	Carl Eickhorn	Solingen (NW)		1937, 40
253		98 bay.	Clemen & Jung	Solingen (NW)		1938 – 39
253		98 bay.	P. Weyersberg	Solingen (NW)		1938 – 40
253		98 bay.	F. W. Höller	Solingen (NW)		1938 – 40
253	ddl	98 bay.	Josua Corts	Remscheid (NW)		1940
253		98 bay.	Mundlos AG	Magdeburg (SA)		1940
253	cof	98 bay.	Carl Eickhorn	Solingen (NW)		1941
313	ab	98 bay.	Mundlos AG	Magdeburg (SA)		1942, 44
357		98 bay.	F. Herder	Solingen (NW)		1937
439	S/244	98 bay.	Mundlos AG	Magdeburg (SA)		
519	cqh	98 bay.	Clemen & Jung	Solingen (NW)		1941 – 44
519	ddl	98 bay.	Josua Corts	Remscheid (NW)		1942 – 43
519	agv	98 bay.	Berg & Co.	Solingen (NW)		1942 – 44
519	asw	98 bay.	F. u. K. Hörster	Solingen (NW)		1942 – 44
519	cof	98 bay.	Carl Eickhorn	Solingen (NW)		1942 – 44
519	ffc	98 bay.	F. Herder	Solingen (NW)		1942 – 44
519	fnj	98 bay.	A. Coppel	Solingen (NW)		1942 – 44
519	fze	98 bay.	F. W. Höller	Solingen (NW)		1942 – 44
519	cvl	98 bay.	WKC	Solingen (NW)		1942 – 44
519	clc	98 bay.	Rich. Herder	Solingen (NW)		1942 – 44
519	crs	98 bay.	P. Weyersberg	Solingen (NW)		1942 – 45
519	cul	98 bay.	E. Pack	Solingen (NW)		1943 – 44

519	pyy	98 bay.	Berg & Co.	Solingen (NW)		1944
519	sgx	98 bay.	F. u. K. Hörster	Solingen (NW)		1944 – 45
537	ddl	98 bay.	Josua Corts	Remscheid (NW)		1943 – 44
547		98 bay.	Dürkopp-Werke			1938 – 39
655		98 bay.	J. Sch.			1940 – 41
655		98 bay.	J. Sch.			1940 – 41
757	bym	98 bay.	Maschinenhaus der Büchsenmacher	Ferlach, Kärnten (AT)		1941
777	S/155	98 bay.	E. u. F. Hörster	Solingen (NW)		1935
883		98 bay.	WKC	Solingen (NW)		1939
883		98 bay.	F. Herder	Solingen (NW)		1940
883		98 bay.	F. W. Höller	Solingen (NW)		1940
883		98 bay.	Berg & Co.	Solingen (NW)		1940
883		98 bay.	A. Coppel	Solingen (NW)		1940
883	cqh	98 bay.	Clemen & Jung	Solingen (NW)		1940 – 41
883	crs	98 bay.	P. Weyersberg	Solingen (NW)		1940 – 41
883	cul	98 bay.	E. Pack	Solingen (NW)		1940 – 41
883	ddl	98 bay.	Josua Corts	Remscheid (NW)		1940 – 42
883	asw	98 bay.	E. u. F. Hörster	Solingen (NW)		1940 – 42
883	cof	98 bay.	Carl Eickhorn	Solingen (NW)		1940 – 42
883	clc	98 bay.	Rich. Herder	Solingen (NW)		1940 . 41
883	ffc	98 bay.	F. Herder	Solingen (NW)		1941
883	cvl	98 bay.	WKC	Solingen (NW)		1941
883	fnj	98 bay.	A. Coppel	Solingen (NW)		1941

883	fze	98 bay.	F. W. Höller	Solingen (NW)		1941
883	agv	98 bay.	Berg & Co.	Solingen (NW)		1941, 43
938	bym	98 bay.	Maschinenhaus der Büchsenmacher	Ferlach, Kärnten (AT)		1943 – 44
715		98 bay. throat spring on Elite Diamant bay.	Langer	Chemnitz (Sn)		1941
251	jwh	98 bay., K98k lower band for Gustloff 43, G41 and G43 cross lug	Manufacture d'Armes Chatellerault (MAC)	(FR)		1941 – 44
136		98 chamber cleaning tool				
65	336	adapter to artillery shell	Richard Rinker	Menden (NW)		1938, 40
300		air pressure gauges				
589		airfilter	Delbag	Berlin (Be)		
102		aluminium part	WJ			1935
B65		aluminium piece	A. Deichsei			
665		aluminium piece	A. Deichsei			
36	ada	ammo box	Stephan Nahrath	Ahlen (NW)		1943
41		ammo box				1938
170		ammo box				1938
181		ammo box				1939
379	ebr	ammo box	Westermann	Neheim-Hüsten (NW)		1939
41	jsq	ammo box	Alsfelder Möbelfabriken	Alsfeld (He)	also marked "axp"	1943
601	bow	ammo box – steel	Dresbach & Cie	Halver (NW)		1940
170	bdq	ammo box 3,7	Ehrhardt und Kirsten	Leipzig (Sn)		1945

222	raj	ammo case				
28		ammo container	John AG			1936
286	fyr	ammo cradle for French 7,5 cm	Gebr. Müller	Worms (RP)		1943
878	cpj	ammo metal box	Havelwerk	Brandenburg (Bb)		1941
836		ampere meter				
677		amperemeter	Siemens			
538		antenna parts	Wichmann			
42		armorers gauge				
96		armorers gauge	Hommel Werke	Mannheim (NW)		
157	P	art. case	Polte	Magdeburg (St)		1936
C97	cpp	art. fuse	Rheinmetall-Borsig	Breslau (PL)		
1	myx	art. fuse	Rheinmetall-Borsig	Sömmerda (Th)		1943
12	ksm	art. fuse	Junghans	Braunau (CZ)		1942 – 43
12	ojo	art. fuse	Messap	Halbstadt (CZ)		1944
17	jrr	art. fuse	Junghans Uhrenfabrik	Renchen (BW)		1943
41	bmv	art. fuse	Rheinmetall-Borsig	Sömmerda (Th)		1942
83	awl	art. fuse	Sils van de Loo & Co.	Fröndenberg (NW)		1944
100		art. fuse				1935
121	fmx	art. fuse	Krüger & Co.	Berlin (Be)		1943
146	gpk	art. fuse	Winkler und Dünnebier	Neuwied (RP)		1943
153	ews	art. fuse	Skodawerke	Königgrätz (CZ)		1942
178	cja	art. fuse	Junghans	Schramberg (BW)		1944
208	eme	art. fuse	Deisting & Co.	Kierspe (NW)		1944
213	auf	art. fuse	Mettall Guss u. Presswerk	Nürnberg (By)		1944

222	acb	art. fuse	Rheinisch-Westfälisches Kunststoffwerk	Mühlheim (NW)		1943 – 44
314	S338	art. fuse	Otto Fuchs, Metallwerke	Meinerzhagen (NW)		1940
339	amh	art. fuse	Hans Büllmann-Werke	Gablonz (CZ)		1943
357	aq5	art. fuse	Süddeutsche Armaturenfabrik	Heidenheim (BW)		1943
378	bes	art. fuse	H. Kimmel	München (By)		1944
397	cxh	art. fuse	Kienzle Uhrenfabriken	Schwenningen am N. (BW)		1942
398	amh	art. fuse	Hans Büllmann-Werke	Gablonz (CZ)		1943
434		art. fuse				1939
488	gyu	art. fuse	Michera, Gebr.	Stare-Tura (SK)		1943
494	auf	art. fuse	Metall Guss u. Presswerk	Nürnberg (By)		1943 – 44
517	dpv	art. fuse	Zeiss-Ikon	Dresden (Sn)		1944
544	bzp	art. fuse	A. Gautier	Calmbach/Enz (BW)		1942
597	auj	art. fuse	Monheimer Ketten u. Metallwaren-industrie	Monheim (NW)		1943
597	edb	art. fuse	Matthias Hohner	Trossingen (BW)		1943
627	blv	art. fuse	Erhard Schmidt	Bromberg (PL)		1943 – 44
715	j	art. fuse	Langer	Chemnitz (Sn)		1943
766	aeq	art. fuse	Bartos u. Co.	Caslau (CZ)		1943
789	fcv	art. fuse	Schmidt, Kranz & Co.	Nordhausen (Th)		1943
813	cpr	art. fuse	Hasse & Wrede	Berlin (Be)		1944
831	aq5	art. fuse	Süddeutsche Armaturenfabrik	Heidenheim (BW)		1943
849	awl	art. fuse	Sils van de Loo & Co.	Fröndenbergl (NW)		1944
857	S270	art. fuse	Heinrich Diehl	Nürnberg (By)		1940
857	awl	art. fuse	Sils van de Loo & Co.	Fröndenbergl (NW)		1941
873	ccv	art. fuse	Rodi & Wienberger	Pforzheim (BW)		1943

873	btj	art. fuse	Kollmer & Jourdan	Pforzheim (BW)		1943
912	frk	art. fuse	Sigmund Pumpen	Olmütz-Luttein (CZ)		1942
935	umq	art. fuse				
203	cnb	art. fuse – French cannon	Presta Metallwerk	Wuppertal-Eilberfeld (NW)		
B39	com	art. fuse timing tool	Mafa Werk	Werdau (Sn)		
258	drh	art. fuze	Thiel	Ruhla (Th)		
384	bvw	art. fuze	Jurk Sirenenfabrik	Radeberg (Sn)		1944
732	bmv	art. fuze	Rheinmetall-Borsig	Sömmerda (Th)		1940 – 41
424	RhS	art. grenade part	Rheinmetall	Sömmerda (Th)		1937
716	RhS270	art. grenade part	Rheinmetall	Sömmerda (Th)		1940
166		art. range finder	Wild	Heerbrugg, Schweiz		1943
429	gwr	art. slide rule	Dennert & Pape	Hamburg (Hh)		1943
217	bws	artillery fuse activation delay time setting	Kurt Pannke	Berlin (Be)		
Luft 4		assembled K98k	from BSW/Gustloff parts			1939 – 41
C10		assembly of Walthers K43 ?				1944 – 45
D20		Astra 300 pist.	Unceta y Compania S.A.	Guernica (ES)		
251		Astra 300 pist.	Unceta y Compania S.A.	Guernica (ES)		
84		axe	H & W Stoll	Wuppertal (Cronenberg) (NW)		1934
123		axe				1936
279	hfr	backpack	Sachs & Dreiselberg	Hamburg (Hh)		1942
778		bakelite box				
853		bakelite box				
542		bakelite box for fuse	Richard Rinker			1939

78		bakelite carbide lamp				
727		bakelite lantern				
31	duz	ball bearing	Vereinigte Kugellagerfabriken	Schweinfurt (By)		
547	jzb	barbed wire cutter	Carl Mesenhöller	Remscheid-Hasten (NW)		
358		barrage baloon		Bad Saarow (Bb)		1940
480		barrel for a K98k dou				1944
107		battery	Otto Gross – Hamburger Batterie-Fabr.	Hamburg (Hh)		1944
217	bmk	battery box	Srb & Stys	Prag (CZ)		
217		battery box	K.F.B.			1939
703	ddv	battery box	Oculus	Berlin (Be)		
752		belt bag 34				
41	jhg	Ber. hol.	G. Genschow (=Geco)	Hachenburg (RP)		1942, 44
C35		binocular case	Polskie Zaklady Optyczne – PZO	Warszawa (PL)		1939 or 1940
14	ksd	binocular case	Walter Winkler	Spandau (Be)		1941, 43
92		binocular case	Hensoldt	Wetzlar (He)		
146		binocular case	Busch			
279		binocular case	Kroymann & Co.	Hamburg (Hh)		1939
279		binocular case				1941
326		binocular case	Busch			1935, 37
326		binocular case				1941
326	blc	binocular case	Carl Zeiss	Jena (Th)		1944
383		binocular case	P. H. Riebel & Söhne	Ingolstadt (By)		1939
412		binocular case	Carl Zeiss	Jena (Th)		
C52		binocular case for SRB &	Fafek	Prag (CZ)		

		STYS (Prag) bi- nocular				
24		binocular leather				
112		binocular leather	E. Leitz	Wetzlar (He)		1936 – 37
112		binocular leather	Hensoldt	Wetzlar (He)		1937
25		binoculars	perhaps not German made			
202	bmj	binoculars	Hensoldt	Wetzlar (He)		
202		binoculars	Carl Zeiss	Jena (Th)		1933, 36, 39
217		binoculars	Oigee	Berlin (Be)		
332	eso	binoculars	Rodenstock	München (By)		
414		binoculars	E. Leitz	Wetzlar (He)		
414	bmj	binoculars	Hensoldt	Wetzlar (He)		
900		binoculars 6x	Russian marked FLA			
815	bnz	blank fi. adapt. MP40	Steyr, Werk Steyr	Steyr (AT)		
531		Blitz truck	Opel	Brandenburg (Bb)		1937
266		BMW en- gine R35				1938
519		boatman pipe	D.R.G.M-			
375	Rhs357	bomb fuse				1940
239	Rhs195	bomb fuze				1937
37		boots pull up				
397		Bosch part on Horch 901				
54	bpo	box for handgre- nades	Johann Jäckle	Schwennin- gen (BW)		1941
63	cpa	box for mags for MG26(t)	Ostertag-Werke	Aalen (BW)		1941
286		box for MG bands				1938
497	963	box for MG bands	J. Grossfuss	Döbeln (Sn)		1940

647	brc	box for MG bands	Fr. Weber & Co.	Berlin (Be)		1941
668		box for MG bands	Merz Werke	Frankfurt (He)		1940
216	onm	box for MG ZF	Saunier	Paris (FR)		
765		box for MGZ 34 (Voigtländer)				
640	dug	box for panzerfaust	Junge & Jordan	Ostheim/Rhön (By)		1944
Luft 184	efj	box for parachute	Georg Ebeling	Prenzlau (Bb)		
B30		box for vernier gauge				
217		boxes	Biedermann & Czarnikow	Berlin (Be)		1936
518		British Enfield spike bayonet			marked W8A 518	
14	jsd	Brng. HP hol.	G. Reinhardt	Berlin (Be)		1941 – 42
14	emj	Brng. HP hol.	Adalbert Fischer	Berlin (Be)		1942
41		Brng. HP hol.				
47	cgn	Brng. HP hol.	Jos. Poeschl's Söhne	Rohrbach (By)		1941
136	bdt	Brng. HP hol.	Salewa	München (By)		1941
136	bdr	Brng. HP hol.	R. Erhardt	Pössneck (Th)		1941, 43
159		Brng. HP hol.	E. G. Leuner	Bautzen (Sn)		1941
182	ftc	Brng. HP hol.	Frost und Jahnel	Breslau (PL)		1941 – 42
182	grz	Brng. HP hol.	Krüger	Breslau (PL)		1941, 43, 44
182	bnz	Brng. HP hol.	Steyr-Daimler-Puch	Steyr (AT)		1944
195	epf	Brng. HP hol.	Karl Böcker	Waldbröhl (NW)		1941 – 42
195	dta	Brng. HP hol.	A. Waldhausen	Köln (NW)		1941 – 43
286	jkh	Brng. HP hol.	Carl Busse	Mainz (RP)		1941 – 44

286	jkh	Brng. HP hol.	Carl Busse	Mainz (RP)		1943
668	hlv	Brng. HP hol.	Maury & Co.	Offenbach (He)		1943 – 44
920	jor	Brng. HP hol.	A. Muzik	Wien (AT)		1941
920	dvr	Brng. HP hol.	J. Fröhlich	Wien (AT)		1942
920	cgn	Brng. HP hol.	J. Poeschl, RBNr. 0/1032/0001	Rohrbach (AT)		1942 – 44
927		Brng. HP hol.	S. A. W.	München (By)		1942
927	bdt	Brng. HP hol. + other goods	Salewa	München (By)		1943 – 44
77	lyo	Brng. HP hol. + P38 hol.	Kromolowski	Radom (PL)		1944
195	dla	Brng. HP hol. MG tool pouch	Karl Barth	Waldbröhl (NW)		1941, 43, 44
103		Brng. HP pistol	F. N.	Lüttich (BE)	Etzel	1941
Luft 2		Brng. 1922 hol.	Heinrich Krieghoff	Suhl (Th)		
Luft 7	hck	Brng. 1922 hol.	Georg Lerch	Berlin (Be)		1941
Luft 21	jsd	Brng. 1922 hol.	Gustav Reinhardt	Berlin (Be)		1943
A44		bronze bearing				1945
133		bunker lamp				
392		bunker lamp				
Su4		C96 reworked “red nine” pistol	The gun was accepted by the HZA (Heereszeugamt) at Spandau and this was not a part of the WaA organization			in the Nazi time?
304		cable drum	A. Fahr			1940
327	awf	cable drum	Maschinen- und Armaturenfabrik	Magdeburg (SA)		

815		cable drum	Prestag	Berlin (Be)		1936
39		cable out-roller				
304		cable part	KM ?			1941
737		cable re-winder	Dresbach & Cie	Halver (NW)		1941
148	dfb	cal. .22 conversion kit	Gustloff-Werke	Suhl (Th)		
6		cal. .22 conversion kit, magazine	Erma	Erfurt (Th)		
81		cal. .22 conversion kit, magazine	Haenel	Suhl (Th)		Weimar
51		cal. .22 conversion kit, receiver	Haenel	Suhl (Th)		
280		cal. .22 conversion kit, receiver, bolt, magazine	Erma	Erfurt (Th)		1937 – 38
77	Erma	cal. .22 conversion kit, receiver, bolt, wooden box	Erma	Erfurt (Th)		1937 – 38
316		calculating tool	MK			
380		calculating tool	Gebr. Wichmann	Berlin (Be)		
280		caliber drift				
114		caliper				
300	dvn	callipers	H. F. Schnicke	Chemnitz (Sn)		1943
871	cob	cannon part	Netzschkauer Maschinenfabrik	Netzschkau (Sn)		
330		canon muzzle protector				
C28	hhp	canvas cover for binocular	Gebr. Männel KG, Schürzenfabrik	Falkenstein (Sn)		1943

65		cap for handgrenade				
195		carbide box				
65		carbide lamp				
124		carbide lamp	F. F. A. Schulze	Berlin (Be)		1934 - 36
145		carbide lamp				
204		carbide lamp	BB			1936
234		carbide lamp	A. Sartorius	Wuppertal (NW)		1936
382		carbide lamp				
772		carbide lamp				
182		carrying frame for 10,5 shell				
104		cartridge box				
801	bow	cartridge box 36	Dresbach & Cie	Halver (NW)		1941
42		cartridge gauge	Ultra	Aschaffenburg (By)		
42		cartridge gauge	Piltz			1939
42	cr	cartridge gauge	Zander & Opitz	Berlin (Be)		1939 - 40
42		cartridge gauge	Polte	Magdeburg (SA)		1939 - 41
42	gmm	cartridge gauge	Eckhardt & Lohkamp	Berlin (Be)		1944
512	cr	cartridge gauge	Zander & Opitz	Berlin (Be)		1944
282	fer	cartridges	Metallwerk Wandhofen	Schwerte (NW)		1942
195	P439	case	Eisenwerk Rothe Erde	Dortmund (NW)		1937
204		case basket	WJ			1935
211	ar	case extractor	Mauser Werke	Borsigwalde (Be)		
107	P	case for 18 cm howitzer	Polte	Magdeburg (SA)		1936

D42	jqh	case for spade	Walter Krause	Bromberg (PL)		
123		case for stick grenades, box for MG bands	WF Co.			1938 – 40
47		chisel				1938
834		chisel				1941
207		cipher device ?				
145	bdk	clamp tool	Schneiderwerke, St. Ingbert	Saar (SI)		
145		clamp tool	Gustav Klauke	Remscheid (NW)		1938
320		cleaning brush for MG				
103		climbing iron		Stubai, Tirol (AT)	Etzel	
52		climbing tool	J. Schwahlen	Solingen (NW)		
58	jkg	clip for 4 cm case	Ung. Staatl. Eisenfabriken	BudaPest (HU)		1941
19	hly	cln. kit	Krafft & Schüll	Düren (NW)		
409		clock	Köhler & Co.	Nürnberg (By)		
86		clock & wooden stand	Kienzle Uhrenfabriken			1941
178		clock & wooden stand	Junghans	Schramberg (BW)		1942
397		clock & wooden stand	Kienzle Uhrenfabriken			1941 – 42, 44
492		clock & wooden stand	Kienzle Uhrenfabriken			1937
65		coffee container	Wesco			1937
301		coffee grinder				
376		contact	F. R.			1938
2		control system for V2 rocket				

668	jhz	cover for K98k rear sight	Jean Weipert	Offenbach /Main (He)		1941
190	bvv	crank	Rothmüller-Mewa	Wien (AT)		1944
25		cup	E.R.F.R.I			
300		cutlery, plate	EFG			1939
76	fnh	CZ27 pist.	Böhmische Waffenfabrik	Strakonitz, Prag (CZ)		1943 – 45
721		CZ27 pist. hol.	RBNr 0/1250/0011	Kreis Königgrätz (CZ)		1943 – 44
76		CZ38 pist.	Ceská Zbrojovka akc. Spol. V praze	Stragonitz, Prag (CZ)		
Marine M III/d	brx	detonator C/38	Süddeutsche Bremsen	München (By)		
869		diving helmet	Friedrich Flohr	Kiel (SH)		
110	dth	drag anchor	Vosswerke Sarstedt	Sarstedt (Ni)		
770	new	dynamo	AEG	Berlin (Be)		1944
504		ear phone				
584		ear phone	F. L.			1943
300	bn	egg grenade	Allgemeine Electricitätsges	Annaberg (Sn)		1941
D29	ggm	egg hand-grenade	Annweiler Email- u. Metall Werke	Annweiler /Trifels (RP)		1943
588		el. cable				1939
315		el. cable plug				1938
444		el. cable plug				
747		el. cable plug	F. G. Neptun			1939
B31		el. equipm.	SABA	Villingen (BW)		
577		el. equipm.	Siemens & Halske	Berlin (Be)		1938, 42
584		el. equipm.	Seibt	Berlin (Be)		
584		el. equipm.	Baco, Linke	Berlin (Be)		
584		el. equipm.	Varta, Pfalzgraf	Berlin (Be)		
584		el. equipm.	B & G			1944
586		el. equipm.				
900	ejo	el. equipm.	Preßwerk AG	Essen (NW)		1944

903		el. equipm.	Ostmarkwerk Prag	Prag-Gbell (CZ)		
904		el. equipm.	C. Lorenz AG	Mühlhausen (Th)		
905		el. equipm.				
444		el. equipment	Ruhstrat	Göttingen (Ni)		1945
44		el. genera- tor	Auto Union			
410		el. meas. equipment, ohm meter	Metrawatt	Nürnberg (By)		
885	rhq	el. motor				1944
618		el. plug				
52		el.cable plug				1937
107		electronic equipm.	Habafa	Hamburg (Hh)		1944
836		electronic meter				1944
504		electronic switch	Mikrofona, Gebr. Knotek	Prag (CZ) or Meseritz (PL)		1943
BAL 30		electronics	Telefunken	Berlin (Be)		
38		electronics	Mende Radio	Dresden (Sn)		1939, 41
89		electronics	Telefunken GW	Erfurt (Th)		
117		electronics	Staru GmbH	Staßfurt (SA)		
BAL 181		electronics	Telefunken	Berlin (Be)		
338		electronics	Lorenz, Boas	Berlin (Be)		1936 - 37
444		electronics	Phywe, Imperial	Göttingen (Ni)		
BAL 476		electronics	Seibt	Berlin (Be)		
506		electronics	C. Lorenz AG	Berlin (Be)		
506		electronics	Telefunken	Riga (LV)		
BAL 559		electronics	Telefunken / AEG	Berlin (Be)		
617		electronics	Telefunken	Berlin (Be)		
617		electronics	Telefunken	Erfurt (Th)		
770		electronics	Lorenz, AEG, Linke	Berlin (Be)		
798		electronics	Kapsch u. Söhne	Wien (AT)		
801		electronics	Homy, Minerva	Wien (AT)		

801		electronics	Valvo, Tungsram	Wien (AT)		
836		electronics	NSF, Br&St, TeKaDe	Nürnberg (By)		
69		enigma				
315		enigma				
142		entrenching tool	Kjellberg Ma- schinen	Fürstenwalde (Bb)		1936
Luft 2		erdkampfvier- sler MG15				
26	logo	extractor tool	Mauser-Werke	Borsigwalde (Be)		
3	fzs	FG42	Heinrich Krieg- hoff	Suhl (Th)		
142		field kitchen	JSD			1938
301		field kitchen	DR.G.M.			
110	avq	field kitchen box	Senkingwerke AG	Hildesheim (Sn)		
44		field kitchen M/1928	Haas & Sohn	Neuhoff- nungshütte bei Sinn (He)		1928
101		field kit- chen, coffee-con- tainer, soup spoon	H. R. E.			1937 – 38
39		field phone				1937
134	emy	field phone	Friedrich Merk	München (By)		1941
191		field phone	ERKA	Berlin (Be)		1942
410	fsc	field phone	Mikrofona	Meseritz (PL)		
506		field phone				
571		field phone				1937
615	fsc	field phone	Mikrofona	Meseritz (PL)		1941
618		field phone	ERKA	Berlin (Be)		1942
770		field phone				1941
919		field phone				1941
376		field phone, morse de- vice				
350		fieldphone	Si & Co.			1937
886		fieldphone				
900		fieldphone	Vereinigte Bayrische Telephonwerke	München (By)		1943
898		fieldphone, battery charger				1941

295		firing pin for cannon				
497	bpr	first aid kit	J. Grossfuss	Döbeln (Sn)		1944
182	grz	first aid kit, pouch, horse leather equipment	Krüger	Breslau (PL)		1943 – 44
159		first aid pouch	E. G. Leuner	Bautzen (Sn)		1939, 44
727		first aid pouch	Hansen & Braun	Solingen (NW)		1940
15		Flak 10,5 grenade				
80	dou	Flak 8,8 case	Waffenwerke Brünn II	Bystrica (CZ)		1944
468	avt	Flak 8,8 case	Silva-Metallwerke	Magdeburg (Sn)		1942
D57	byl	Flak 8,8 cm beech part	Andritz	Graz (AT)		1944
14	crv	Flak 8,8 cm part	Fritz Werner	Berlin (Be)		1944
170	knb	Flak 8,8 cm part	Albert Schmidt	Leipzig (Sn)		1944
637	cxx	Flak 8,8 cm part	J. M. Voith	Heidenheim (BW)		1944
334	enl	Flak 8,8 firing pin	AEG Allg. Elektrizitätsgesellschaft	Henningsdorf (Bb)		
156	bva	Flak 8,8 instrument	Petravic	Wien (AT)		1944
779	ksz	Flak 8,8 mount	Osmag Oberschlesische Maschinen u. Waggonfabrik	Eintrachtshütte (PL)		1944
98		Flak 8,8 part				
205	fue	Flak 8,8 part	Skodawerke	Dubnica (CZ)		
775	dkf	Flak 8,8 tool	A. Hering	Neustadt (Sn)		
780		Flak optik				
271	arx	Flak18 case	Collis Metallwerke	Westhausen, Aalen (BW)		1943
A10	wa	flare gun	HASAG	Leipzig (Sn)		

26	S/237	flare gun	Berlin-Lübecker Maschinenfabri- ken	Lübeck (SH)		1938
280	ayf	flare gun	Erma	Erfurt (Th)		1941
99	qyn	flare gun M42				
Marine M I/5	eeo	flare pistol round	DWM	Posen (PL)		1942
360		flare pistol round				
14	dde	flrgn. hol.	Robert Larsen	Berlin (Be)		1940 – 41
14	fuq	flrgn. hol.	Curt Vogel, Le- derwarenfabrik	Cottbus (Bb)		1940 – 43
16		flrgn. hol.				
68		flrgn. hol.	Karl Budis- chowsky	Wien (AT)		1942
89		flrgn. hol.	Curt Vogel, Le- derwarenwerk	Cottbus (Bb)		1940
94		flrgn. hol.	Frost und Jahnel			
94		flrgn. hol.	L. Seschke			1935
101		flrgn. hol.	Ernst Kurz	Stuttgart (BW)		1937
136	cww	flrgn. hol.	Carl Weiss	Braun- schweig (Ni)		1941
159		flrgn. hol.	E. G. Leuner	Bautzen (Sn)		1937
170		flrgn. hol.	Albin Scholle	Zeitz (SA)		1938 – 39
170	bdq	flrgn. hol.	Ehrhardt und Kirsten	Leipzig (Sn)		1940 – 41
182		flrgn. hol.	Frost und Jahnel	Breslau (PL)		1937
182		flrgn. hol.	Krüger	Breslau (PL)		1940
195	dta	flrgn. hol.	A. Waldhausen	Köln (NW)		1942, 44
195	epf	flrgn. hol.	Karl Böcker	Waldbröhl (NW)		1944
279		flrgn. hol.	C. Otto	Pinneberg (SH)		1938
387		flrgn. hol.	Karl Barth			1937
400		flrgn. hol.	L. A. S. ?			1937
445	fsx	flrgn. hol.	Albin Scholle	Zeitz (SA)		1940 – 42
456	gaq	flrgn. hol.	Otto Stephan	Mühlhausen (Th)		1942 – 43
623		flrgn. hol.	Carl Budischowsky	Wien (AT)		1942

668	gfg	flr gn. hol.	Carl Hepting	Stuttgart (BW)		1942
286		flr gn. hol., knapsack	Carl Busse	Mainz (RP)		1937
136	gmn	flr gn. hol., leather pouch	Riebel und Söhne	Ingolstadt (By)		1942
411	cqr	flr gn. hol., telephone hol.	Lederwerk Sedima	Finkenwalde, Stettin (PL)		1940
Luft 2	fzs	flr gn. pist. FG42	Heinrich Krieghoff	Suhl (Th)		
103		FN 10/22 pistol	F. N.	Lüttich (BE)	Etzel	1941
613		FN 10/22 pistol	F. N.	Lüttich (BE)	Tennert	1941
140		FN 10/22 pistol, Brng. HP pist., P38 pist. parts	F. N.	Lüttich (BE)	Zorn	- 1944
143		folding knife				
920		folding rule	Uusta ?			
A84	agv	folding shovel	Berg & co.	Solingen-Ohligs (NW)		1940
60	89	folding shovel	Lange	Berlin (Be)		1940
427		folding shovel	VBW			
568	gcq	folding shovel	Heinrich Jung & Sohn	Halver (NW)		1941
727	epd	folding shovel	Beckersche Werkzeugfabriken	Remscheid-Vieringhausen (NW)		
869		folding shovel, leather for	Paul Kupper	Berlin (Be)		1940
101		food container	H. R. E. or H. E. R.			1938, 40
366	kgx	food container	Emaillierwerk Krone	Oelde (NW)		1944
416		food container	G u S			1939
416	auo	food container	Metallindustrie	Neunkirchen (SI)		1941
418		food container	Fissler	Idar-Oberstein (RP)		1938

100	krm	for foreign contractors	C. Pose	Berlin (Be)		
138	krm	for foreign contractors	C. Pose	Berlin (Be)		
203	kpm	for foreign contractors	Franz Corbau	Berlin (Be)		
BA 496		for Heinkel-Werke				
BA105 3 ?		for Junkers	Henschel Flugzeug-Werke	Berlin (Be)		
85		fork-spoon	FWBN			1939
142		fork-spoon	CFH			1937 – 38
142		fork-spoon	GAG			1938
142		fork-spoon	BFG			1938
145		fork-spoon	O. H. W.			1937
269		fork-spoon	WMI			1937
300		fork-spoon	GAG			1939
606		fork-spoon				
727		fork-spoon				
416		fork-spoon, food container	MN			1937, 38
D20		French Unique Kriegsmo- dell pist.	Manufacture D'Armes des Pyrenees, Hendaye	(FR)		
251		French Unique mod. 16, 17 + Kriegsmo- dell pist.	Manufacture D'Armes des Pyrenees, Hendaye	(FR)		
101		frying pan	Verband Deutscher Elektro- techniker			1939
142		frying pan	BFG			
124		funnel	F. F. A.			1935
301		funnel				
244	90	fuse	Bergmann Elektr. Werke	Wilhelmsruh (Be)		1939
263		fuse				1937?
467		fuse				1939
556	dwx	fuse	Schmöle & Co.	Bad Zungen (Th)		1944
387		fuse 29	Richard Rinker			1940
448		fuse 29	Richard Rinker			1940

258	hhj	fuse 8,8 cm	Thiel	Ruhla (Th)		1941, 43
258	bpm	fuse 8,8 cm	MIFA	Sangerhausen (Sn)		1942
491		fuse container				
634		fuse for tellermine	Richard Rinker			1940
358		fuse French 7,5 cm cannon				1942
142		fuse setting				1942
320		fuse, el.	EKI			
560		fuses & metal box for fuse	Richard Rinker			1939
873	jzj	fuze for 8,8 cm Flak	Albert Irion	Stuttgart-Münster (BW)	maker not certain	1944
A80		G24(t)	Waffenw. Brünn	Bystrica (SK)		1941 – 42
77	660	G29/40	Steyr-Daimler-Puch	Steyr (AT)		1939
623	660	G29/40	Steyr-Daimler-Puch	Steyr (AT)		1939 – 40
63	945	G33/40	Waffenw. Brünn	Brünn (CZ)		1940
63	dot	G33/40	Waffenw. Brünn	Brünn (CZ)		1941 – 42
497	bpr	G41(W) buttplate	J. Grossfuss	Döbeln (Sn)		1940
359	ac	G41, G/K43	Carl Walther	Zella-Mehlis (Th)		1941 – 45
135	byf	G41M	Mauser Werke	Oberndorf (BW)		1941 – 42
159	bla	G43 mag. pou., P38 hol.	E. G. Leuner	Bautzen (Sn)		1944
134		G43 parts for Gustloff and Walther	Manufacture d. Armes de St. Étienne	St. Étienne (FR)		1943 – 44
14		G43 pouch	Otto Koberstein	Landsberg a/W – near Be (PL)		
14	cny	G43 pouch	C. Pose	Berlin (Be)		1943-45

929	fuq	G43 pouch	Curt Vogel, Lederwarenfabrik	Cottbus (Bb)		1945
173		G98/40 parts				1942 – 44
104		gas jacket	Auer	Brandenburg (Bb)		
94		gas mask part	S & S			1936
163		gas mask part	H. A. E.			1940
273	ago	gas mask part	E. Luft	Tetschen (CZ)		1941
706		gas mask part	Eschebach	Radeberg (Sn)		1940
104	byd	gas protection equipm.	Drägerwerk	Lübeck (SH)		1943
78		gas-mask				
104		gas-mask	Auer			1940 - 41
111		gas-mask				
185		gas-mask	ABG			1938
320	bwz	gas-mask	Auer	Oranienburg (Be)		
320		gas-mask				1936
320		gas-mask	AB			1937 – 39
320	crt	gas-mask	Clora Atemschutzgeräte	Schwäbisch Gmünd (BW)		1940
426	bps	gas-mask	Metzeler Gummiwerke	München (By)		1941
476		gas-mask				
533	byd	gas-mask	Drägerwerk	Lübeck (SH)		1938, 44
721		gas-mask				
C10	eph	gas-mask container	Königs u. Bismarckhütte	Rybnik (PL)		1944
29		gas-mask container	John AG			1938
739	ets	gas-mask container	Heckler, Metallwarenfabrik	Aue (Sn)		1941
94		gas-mask field gear	Robert Larsen	Berlin (Be)		1937
387		gas-mask field gear	A. Waldhausen	Köln (NW)		1936
B87	gnh	gas-mask filter	Auer	Danzig (PL)		

C39	gnh	gas-mask filter	Auer	Danzig (PL)		
B71	crt	gas-mask filter	Clora Atemschutzgeräte	Schwäbisch Gmünd (BW)		1943
B87	bwz	gas-mask filter	Auer	Berlin (Be)		1943
702	fcc	gas-mask filter	Hermann Nier	Beierfeld (Sn)		1942
125		gas-mask part				
204		gas-mask part	VJW			1938 – 39
204		gas-mask part	AFMA			1939
204	ebe	gas-mask part	Walter	Speyer (RP)		1941
445		gas-mask part				
582		gas-mask part	Haller			1939
886		gauge				
660		gear for trailer	B V V			
69		generator tool box				
A44		G-K43 bolt housing				1944 – 45
B43	aye	G-K43 mag.	Olympia Büromaschinenwerke	Erfurt (Th)		1943 – 45
232		grenade				
Marine M p/2	gqv	grenade igniter	Pommersche Industrie-Werke	Barth (MV)		
40	PR	grenade parts	Rh. S.			
595	Rh.S	grenade parts	Rheinmetall-Borsig	Sömmerda (Th)		1939
141	cwg	grenade smoke explosive	WASAG	Goswig (SA)		1941
400		gun tool	M. Hiessinger	Nürnberg (By)		
749	duv	gunners tool	Berlin-Lübecker Maschinenfabriken	Lübeck (SH)		
204		gunpowder tank	W			1939

38		hand siren	Jurk Sirenfabrik	Radeberg (Sn)		1940
588		hand siren	Helin	Hagen-Vorhalle (NW)		1939
582		handgrenade				
331		handgrenade part				
562		handgrenade part				
737		hand-siren				
182	grz	harness	Krüger	Breslau (PL)		194
206	gxy	harness	Gebr. Klinge	Dresden (Sn)		1944
286		hol. for field telephone parts	Karl Seeger	Offenbach /Main (He)		1935
100	cny	holsters	C. Pose	Berlin (Be)		
387		hoof tongs	Gustav Klath- - - -			1937
770		hook	MH ?			1941
145		horse bride				1937
204		horse comb				1942
533	bwz	horse gas-mask	Auer-Gesellschaft	Oranienburg (Bb)		1943
150	bwz	horse gas-mask	Auer-Gesellschaft	Oranienburg (Bb)	159 ?	
145		horse hoof cleaning knife	Wolfertz & Evertz	Solingen (NW)		1936
727		horse hoof cleaning tool	Gräwiso			1940
14	cvb	horse leather equipment	Otto Sindel	Berlin (Be)		1942 – 43
14		horse leather equipment	Otto Koberstein	Landsberg a/W – near Be (PL)		1942 – 44
98	bmd	horse leather equipment	Max Müller	Nürnberg (By)		1940, 44
101	cdg	horse leather equipment	Auwaerter und Bubeck	Stuttgart (BW)		1942
101	gna	horse leather equipment	Gustav Buchmüller	Stuttgart (BW)		1943

101	ett	horse leather equipment	Landes-Lieferung-Genossenschaft	Stuttgart (BW)		1943
112		horse leather equipment				
195		horse leather equipment	Karl Böcker	Waldbröhl (NW)		1940
195	epf	horse leather equipment	Karl Böcker	Waldbröhl (NW)		1943
286	jkh	horse leather equipment	Carl Busse	Mainz (RP)		1941
330		horse leather equipment	Koch & Benning	Wuppertal (NW)		
446	gyp	horse leather equipment	Hansen & Braun	Solingen (NW)		1944
455		horse leather equipment	J. M. Eckart	Ulm (BW)		1936
468		horse leather equipment	Hugo Diesener	Werningerode (SA)		
515		horse leather equipment				
668	gjh	horse leather equipment	R. Conte	Offenbach (He)		1940 – 42, 44
668	gjj	horse leather equipment	Karl Seeger	Offenbach (He)		1943 – 44
706	gxy	horse leather equipment	Gebr. Klinge	Dresden (Sn)		1942
920	cey	horse leather equipment	Karl Budischowsky	Wien (AT)		1944
927	kot	horse leather equipment	Adalbert Fisher – for foreign contractors	Berlin (Be)		1943
927	kog	horse leather equipment	E. G. Leuner – for foreign contractors	Bautzen (Sn)		1944

136		horse leather equipmnt	Ph. Riebel und Söhne	Ingolstadt (By)		1940, 43
23	dyo	horse leather equipment	J. M. Eckart	Ulm (BW)		1942
23	bml	horse leather equipment	Hans Römer	Neu-Ulm (By)		1943 – 44
706		horse leather part	P. Hofmann			
84		horse mane comb				1939
14		horse saddle	A. Wunderlich	Berlin (Be)		1940
14	jsd	horse saddle	G. Reinhardt	Berlin (Be)		1943
14	jba	horse saddle	A. Wunderlich	Berlin (Be)		1944
14	qkv	horse saddle				1944
41		horse saddle	L & F			
41	jvf	horse saddle	Wilhelm Brand	Heidelberg (BW)		1944
47		horse saddle	AS			1935
47		horse saddle	SLA			1935, 37
94		horse saddle	Franz Cobau	Berlin (Be)		1933, 38
94		horse saddle	Gustav Reinhardt	Berlin (Be)		1937 – 38
100		horse saddle	Otto Sindel	Berlin (Be)		1939
136	bdt	horse saddle	Salewa	München (By)		1943 – 44
159		horse saddle	E. G. Leuner	Bautzen (Sn)		1940, 44
182	ftc	horse saddle	Frost und Jahnel	Breslau (PL)		
207		horse saddle	Otto Koberstein	Landsberg a/W – near Be (PL)		1935
286		horse saddle	-----ury & Co			1936

286		horse saddle	Carl Busse	Mainz (RP)		1936
300		horse saddle	G. Passier & Sohn			1936
300	jwa	horse saddle	Moritz Stecher	Freiberg (Sn)		1940, 42
455		horse saddle	SA			1938
706	jwa	horse saddle	Moritz Stecher	Freiberg (Sn)		1943 – 44
B99	emr	horse saddle	Adalbert Fischer	Guttstadt (PL)	=B79 ? =879 ?	1944
23	lhl	horse saddle bag	Friedrich Schäfer	Ulm (BW)		1942
879	emr	horse saddle, K98 sling	Adalbert Fischer	Guttstadt (PL)	=B79 ? =B99?	1941
641		horse shoe key	A.P.			1943
727		horse shoe tool	H – logo			1939
965	clg	HP hol.	Ernst Melzig	Liegnitz (PL)		1941
938	logo	HSc hol	Christoph Neuner	Klagenfurt (AT)		1942
135	Mauser	HSc pist.	Mauser Werke	Oberndorf (BW)		1941 – 45
655	Mauser	HSc pist.	Mauser Werke	Oberndorf (BW)		1941
Marine M III/8		HSc pist.	Mauser Werke	Oberndorf (NW)	Marine stabsingenieur Wolff	1940 - 44
158		igniter				1941
594		igniter				1939
331		igniter for handgrenade				1937
275	rdf	ignition	WASAG	Reinsdorf (Sn)		
247		ignition 28	Dynamit AG	Förde (?)		1938
35		Impact fuse	Auto Union	Chemnitz (Sn)		1940
123		incendiary bomb				
312	ABP	jerry can	Ambi-Budd Presswerk	Berlin (Be)		1942 – 43

413	ABP	jerry can	Ambi-Budd Presswerk	Berlin (Be)		1939
920		jerry can	Austria	Wien (AT)		1944
104	bwz	jerry can, gas-mask filter	Auer	Oranienburg (Bb)		1941
BAL 785		JU 87-BII	Weser Flugzeu- bau	Bremen (Hb)		1940
BAL 750		JU 88-A5 – made under Junkers Dessau li- cense	Arado Flugzeug- werke GmbH			1940
D40		Ju88 part				1943
BAL 266		Junkers	Allgemeine Transportanla- gen	Leipzig (Sn)		
214	qve	K43	Berlin-Lübecker Maschinenfabri- ken	Lübeck (SH)		1945
B79	awj	K43 mag	The Yale & Towne	Velbert (NW)		
A98	acw rqs	K43 mag.	Gold & Silber- scheideanstalt	Idar-Ober- stein (RP)		
B92 892?	Gcb	K43 mag.	Adolf Grohmann & Sohn	Würbenthal Süd (CZ)		1944 – 45
204	avx	K43 mag.	Südmittel AG,	Mussbach (BW)		
159	ros	K43 mag. pou.	E. G. Leuner	Bautzen (Sn)		1944 – 45
721	skl	K43 pouch, leather pouch, leather for folding shovel				1945
58		K98 chn. rod				
143 140?	Ch	K98 gren. launcher	F. N.	Lüttich (BE)		1942
869	gct	K98 gre- nade lau- ncer	Fischer & Kre- cke	Bielefeld (NW)		
A68	adb	K98 gre- nade launcher sight	Markneukirchner Metallbearbei- tungs GmbH	Markneukir- chen (Sn)		

A68	euh	K98 grenade launcher sight	Meinel-Scholer	Klingenthal (Sn)		
C10		K98 handguard				
101		K98 sling	L & F			
101		K98 sling	Bacher?			1938
845	eeu	K98 winter trigger	Werkzeug- u. Metallwarenfabriken	Schmalkalden (Th)		
81		K98b				
A80	dou	K98k	Waffenw. Brünn	Bystrica (SK)		1942 – 45
1		K98k	Berlin-Suhler Waffenwerke	Suhl (Th)		1937 – 39
1	337	K98k	Berlin-Suhler Waffenwerke	Suhl (Th)		1939 – 40
1	337	K98k	Gustloff-Werke	Weimar (Th)		1940
1	bcd	K98k	Gustloff-Werke	Weimar (Th)		1941 – 45
26	S/237	K98k	Berlin-Lübecker Maschinenfabriken	Lübeck (SH)		1936 – 38
26	237	K98k	Berlin-Lübecker Maschinenfabriken	Lübeck (SH)		1938
26	S/243	K98k	Mauser Werke	Borsigwalde (Be)		1938
26	243	K98k	Mauser Werke	Borsigwalde (Be)		1938 – 40
26	ar	K98k	Mauser Werke	Borsigwalde (Be)		1941 – 44
37	147	K98k	Sauer und Sohn	Suhl (Th)		1938 – 40
37	ce	K98k	Sauer und Sohn	Suhl (Th)		1941 – 44
49	S/147K	K98k	Sauer und Sohn	Suhl (Th)		1934
49	S/243G	K98k	Mauser Werke	Borsigwalde (Be)		1935
49	S237	K98k	Berlin-Lübecker Maschinenfabriken	Lübeck (SH)		1936
61	S/237	K98k	Berlin-Lübecker Maschinenfabriken	Lübeck (SH)		1937
63	S/42G, S/42, 42	K98k	Mauser Werke	Oberndorf (BW)		1935 – 39

63	dot	K98k	Waffenw. Brünn	Brünn (CZ)		1941 – 45
63	dou	K98k	Waffenw. Brünn	Bystrica (SK)		1942 – 44
63	swp	K98k	Waffenw. Brünn	Brünn (CZ)		1945
81	S/237	K98k	Berlin-Lübecker Maschinenfabriken	Lübeck (SH)		1937
108	S/42	K98k	Mauser Werke	Oberndorf (BW)		1935
114	S/147	K98k	Sauer und Sohn	Suhl (Th)		1934 - 35
114	S/237	K98k	Berlin-Lübecker Maschinenfabriken	Lübeck (SH)		1936
116	S/237	K98k	Berlin-Lübecker Maschinenfabriken	Lübeck (SH)		1936
132	S/27G	K98k	Erma	Erfurt (Th)		1935
135	S/42	K98k	Mauser Werke	Oberndorf (BW)		1935
135	ar	K98k	Mauser Werke	Borsigwalde (Be)		1944
211	S/42G	K98k	Mauser Werke	Oberndorf (BW)		1935
211	S/243G S/243	K98k	Mauser Werke	Borsigwalde (Be)		1935 – 36
214	S/147G S/147	K98k	Sauer und Sohn	Suhl (Th)		1935 – 38
214	147	K98k	Sauer und Sohn	Suhl (Th)		1938
214	237	K98k	Berlin-Lübecker Maschinenfabriken	Lübeck (SH)		1939 – 40
241	S/42	K98k	Mauser Werke	Oberndorf (BW)		1935
280	S/27	K98k	Erma und Geipel	Erfurt (Th)		1935 – 37
280	S/243, 243	K98k	Mauser Werke	Borsigwalde (Be)		1938
280	27	K98k	Erma	Erfurt (Th)		1938 – 40
280	ax	K98k	Feinmechanische Werke	Erfurt (Th)		1940 – 41
280	ce	K98k	Sauer und Sohn	Suhl (Th)		1942 – 44
623	660	K98k	Steyr-Daimler-Puch	Steyr (AT)		1939

655	42	K98k	Mauser Werke	Oberndorf (BW)		1940
742	S/27	K98k	Erma und Geipel	Erfurt (Th)		1935
749	337	K98k	Berlin-Suhler Waffenwerke			1940
749	337	K98k	Gustloff-Werke	Weimar (Th)		1940
77	bnz	K98k	Steyr-Daimler-Puch	Steyr (AT)	In-spected in Poland ?	1941 – 44
4	337	K98k	Berlin-Suhler Waffenwerke	Suhl (Th)	Kirschke	1939
303		K98k ar parts				1942
D36	bnz	K98k barrel	Steyr-Daimler-Puch	Steyr (AT)		
26	crv	K98k barrel	Fritz Werner	Berlin (Be)		
26	cxm	K98k barrel	Gustav Genschow	Berlin (Be)		
76	dsh	K98k barrel	F. Janek Waffenfabrik	Prag (CZ)		
13	avk	K98k barrelcontainer	Ruhrstahl	Bielefeld (NW)		
280		K98k bolt stop for Sauer				1936
497	brg	K98k butt-plate	H. W. Schmidt	Döbeln (Sn)		1940 – 43
642	dwc	K98k butt-plate	Boehme	Minden (NW)		
480	gqm	K98k butt-plate for Mauser B	Loch & Hartenberger	Idar-Oberstein (RP)		1944
98	gqm	K98k butt-plate for Mauser O	Loch & Hartenberger	Idar-Oberstein (RP)		1944
280	ayf	K98k floor-plate	Erma	Erfurt (Th)		
214	LU	K98k floorplate for dou				1943
214		K98k parts for Erma				
497	bpr	K98k parts	J. Grossfuss	Döbeln (Sn)		1942
26		K98k parts for BSW				1939

221		K98k parts for BSW				1939
63		K98k parts for Erma				1936
77		K98k parts for Erma				1937
1	i	K98k parts for Gustloff	Elite Diamantwerke	Chemnitz (Sn)		
1	L	K98k parts for Gustloff	Astra Werke	Chemnitz (Sn)		
18	a	K98k parts for Gustloff	Nähmatag	Dresden (Sn)		
18	n	K98k parts for Gustloff	Elsterwerdaer Fahrradfabrik	Elsterwerda (Bb)		
221	d	K98k parts for Gustloff	Brehmer	Leipzig (Sn)		
221	f	K98k parts for Gustloff	Karl Heise	Leipzig (Sn)		
221		K98k parts for Gustloff				1941
221	e	K98k parts for Gustloff	Hermann Köhler	Altenburg (Th)		1942
4	k	K98k parts for Gustloff	Luck und Wagner	Suhl (Th)	Kirschke	
211	243	K98k parts for Mauser, Borsigwalde				1940
140	ch	K98k parts for Mauser, Gustloff	F. N.	Lüttich (BE)	Zorn	1944
63		K98k parts for Sauer				1937
170	hsu	K98k rear sight protection	Sparfeld	Leipzig (Sn)		1942
116	S/147	K98k rec. + r. sight for Sauer	Carl Walther	Zella-Mehlis (Th)		1934 – 36
359	S/147 147	K98k rec. + r. sight for Sauer	Carl Walther	Zella-Mehlis (Th)		1936 – 38
359	ce	K98k rec. + r. sight for Sauer	Carl Walther	Zella-Mehlis (Th)		1941 – 42

359	147	K98k rec. + stock for Sauer	Carl Walther	Zella-Mehlis (Th)		1939
359	ax	K98k rec. for ERMA	Carl Walther	Zella-Mehlis (Th)		1941
359	147	K98k rec. for Sauer	Carl Walther	Zella-Mehlis (Th)		1940
359	ce	K98k rec. for Sauer	Carl Walther	Zella-Mehlis (Th)		1943
411		K98k rec. on Erma				1936
170		K98k sling				1939
721		K98k sling	K. Berger	Prag (CZ)		
721		K98k sling	von Waldow	Prag (CZ)		1942 – 43
280		K98k stock parts for BSW				1938
214	duv	K98k, G41 (W), G-K43, flaregun	Berlin-Lübecker Maschinenfabriken	Lübeck (SH)		1940 – 44
623	bnz	K98k, MP40,	Steyr-Daimler-Puch	Steyr (AT)		1940 – 45
4	BSW	K98k, Mu.co.	Berlin-Suhler Waffenwerke	Suhl (Th)	Kirschke	1937 – 39
655	byf	K98k, P08	Mauser Werke	Oberndorf (BW)		1941
135	byf	K98k, P08, P38, MP44 parts	Mauser Werke	Oberndorf (BW)		1941 – 45
135	svw	K98k, VK98, P38	Mauser Werke	Oberndorf (BW)		1945
821		kable holder	AUI			1940
6	S	Karab. 98b	Simson	Suhl (Th)		
43	S	Karab. 98b	Simson	Suhl (Th)		
46	S	Karab. 98b	Simson	Suhl (Th)		
33		karb. parts				
109		kkw cln. kit	G. Appel	Berlin-Spandau (Be)		1936
159		knapsack	E. G. Leuner	Bautzen (Sn)		1940, 43
354	aux	kurz ammo	Polte	Magdeburg (SA)		1942 – 45
103		lamp	Daimon-Werke	Danzig (PL)	Etzel	
D68		lamp (bakelite)				

210	ejo	lamp (bakelite)	Preßwerk AG	Essen (NW)		
330		lamp (bakelite)	PS			
387		lamp (bakelite)				
750		lamp (bakelite)				
Marine M III/A	akb	lang basis Gerät 42H	Universelle Cigarettenmaschinenfabrik J.C.Müller & Co.	Dresden (Sn)		1943
38		lantern	Eschebach	Radeberg (Sn)		1939
584		lead collector				1944
342		leather bag	Bollmann	Tuttlingen (BW)		1943
217		leather box for battery	??Ilmorgen	Berlin (Be)		
217		leather box for battery	Krieger & Faudt	Berlin (Be)		1934
217		leather box for battery	Hensoldt	Wetzlar (He)		1938
707		leather box for Kienzle desk clock				1940
14	cdc	leather case	Kern, Kläger & Cie	Berlin (Be)		1942
383		leather case				
14		leather case for binocular				1944
847	cvk	leather equipment, horse shoe pouch	Koch & Benning	Wuppertal-Elberfeld (NW)		1941
918		leather for AKAH made PP hol.	AKAH = Albrecht Kind	Hunstig (NW)		
14	fxp	leather for battery case	Hans Kollmorgen	Berlin (Be)		
628		leather for spade				

668		leather for spade	Seeger	Offenbach /Main (He)		1940
14	hck	leather goods	Georg Lerch	Berlin (Be)		1942, 44
47		leather goods	Paul Klopfer	Wien (AT)		1937 – 38
54	dny	leather goods	Karl Bollmann	Tuttlingen (BW)		1941
98	gmm	leather goods	Eckardt & Lohkamp	Berlin (Be)		1942
136		leather goods	Lago Bayern	München (By)		1939
163		leather goods	G. J. Ensink	Ohrdruf (Th)		1937
182	goq	leather goods	Landes-Lieferungs-Genossenschaft	Breslau (PL)		1941
204	jvf	leather goods	Wilhelm Brand	Heidelberg (BW)		1936,38, 39, 41, 44
234		leather goods	Karl Barth	Waldbröhl (NW)		1936
14	hck	leather pouch	Georg Lerch	Berlin (Be)		
100		leather pouch	Paul Bieneck	Berlin (Be)		1939
101		leather pouch	Auwaerter und Bubeck	Stuttgart (BW)		1934, 39
145		leather pouch	Karl Barth	Waldbröl (NW)		1939
170		leather pouch	Otto Graf	Leipzig (Sn)		1936
278		leather pouch	Franz Kuhlmann	Rüstringen i/O (Ni)		1936
315		leather pouch	Cobau	Berlin-Reinickendorf (Be)		1936
387		leather pouch for watch	Fr. Offermann & Söhne	Bensberg (NW)		1937
170	bmu	leather strap	Carl Kuntze	Penig bei Burgstädt (Sn)		1943
788	bml	leather strap	Hans Römer	Neu-Ulm (By)		1941
788	dyo	leather strap	J. M. Eckart	Ulm (BW)		1941

409		leather strap for field phone				
920		leatherbelt flap	Friedrich Keller	Oberstein (RP)		1936
707		Luftwaffe condensa- tor	Lorenz			
Luft 2	ce	Luftwaffe drilling	J. P. Sauer & Sohn	Suhl (Th)		1942
33		Luger P08	Simson			1926
82		M1890 sa- bre	A.Coppel	Solingen (NW)		
118		M1890 sabre	Carl Eickhorn	Solingen (NW)		
84		M1894 (rew.) bay.	Kongsberg Våpenfabrik	Kongsberg (NO)		1942 – 45
84		M1894 rifle	Kongsberg Våpenfabrik	Kongsberg (NO)		1943 – 45
84		M1914 pist.	Kongsberg Våpenfabrik	Kongsberg (NO)		1941 – 45
25		M1922 sa- bre				
46		M1922 sa- bre				
61		M1922 sa- bre	Weyersberg & Kirschbaum	Solingen (NW)		
62		M1922 sa- bre				
82		M1922 sa- bre	Carl Eickhorn	Solingen (NW)		
118		M1922 sabre	Carl Eickhorn	Solingen (NW)		
253		M1922 sa- bre	Carl Eickhorn	Solingen (NW)		
162		M1935 pist	P. Beretta	Gardone (IT)		
64	bdp	M24 hand- grenade	Friedrich Maurer & Söhne	München (By)		1943
480		M24 stick grenade				1940
655	Mauser	M34 pist.	Mauser Werke	Oberndorf (BW)		1939 – 41
189		m35 pist. mag.	Steyr-Daimler-Puch	Warschau (PL)		
D20		MAB mod. D pist.	Manufacture D'Armes des Bayonne	Bayonne (FR)		

251		MAB mod. D pist.	Manufacture D'Armes des Bayonne	Bayonne (FR)		
25	?pa	magazine box for MG26(t)				1942
300		manometer	H. F. S. C.			1940
34		map bag				1934
429		map desk				
765		map pouch	Schambach & Co.	Berlin?		1942
41	jhg	Mauser HSc hol.	G. Genschow (=Geco)	Hachenburg (RP)		
195		Mauser HSc hol.				
286		Mauser HSc hol.	G. Genschow	Hachenburg (RP)		1938, 40 – 42
286	jhg	Mauser HSc hol.	G. Genschow	Hachenburg (RP)		1941 – 42
204	666	meas. in- strument	Rudolf Dinglin- ger	Köthen (ST)		
414		meas. in- strument	Kremp	Wetzlar (He)		
538	cme	meas. in- strument	Wichmann	Berlin (Be)		1941
213		measure in- stru ment	A.Ott	Kempten (By)		
213		measure in- strument	Gebr. Wich- mann	Berlin (Be)		
278		measure in- strument	Franz Kuhlmann	Rüstringen i/O (Ni)		1934
42		measuring clock	Carl Mahr	Esslingen (BW)		
42		measuring instrument	Carl Zeiss	Jena (Th)		1939
160		measuring instrument	GEME W.U.			
188		measuring instrument	Franz Kuhlmann	Rüstringen i.O. (Ni)		
250		measuring tool	W. Göhlers	Freiberg (Sn)		
606		measuring tool				
204		medical tool	Aesculap			
65	brb	metal ammo box	Richard Rinker	Menden (NW)		1937

101	bzk	metal ammo box	Wagner & Keller	Ludwigsburg (BW)		1942, 44
445	jrt	metal ammo box	Opel & Kühne	Zeitz (SA)		1942
824	jdq	metal ammo box	Schmiedeberger Metallwarenfabrik	Schmiedeberg, Dresden (Sn)		1943
14	cju	metal box	Hermann Grau	Berlin (Be)		1943
23	?pa	metal box				1942
145	logo	metal box	R & S			1938
217	clm	metal box	Biedermann & Czarnikow	Berlin (be)		
788	cpa	metal box	Ostertag-Werke	Aalen (BW)		1941
327	qwo	metal box for 4,7 cm Pack				
327	dzw	metal box for mines	Metallwerke v. Galkowky & Kielblock	Finow (Bb)		
217	cme	metal box for range-finder	Wichmann	Berlin (Be)		
320		metal drum				
413		metal food container	MN			1937, 38
189	klS	MG 42	Steyr-Daimler-Puch	Warschau (PL)		
217	cjl	MG 42 sight	Paul Gebhardt	Berlin (Be)		
C23	bzl	MG band box	Friedrich Siemens	Wien (AT)		
A86		MG band box	N. A. S. ? N. S. A. ?			1940
A86	ada	MG band box	Stephan Nahrath	Ahlen (NW)		1943
136		MG band box				1939
136	brh, 743	MG band box	Schaltbau	München (By)		1940
486		MG band box				
540		MG band box	WS			1938 – 39
300	evv	MG band box, acces. box	F. A. Anker & Sohn	Jöhstadt (Sn)		1942

A10	wa	MG band loader	HASAG	Leipzig (Sn)		1943
710	azg	MG band parts	Siemens-Schuckert	Berlin (Be)		1941
B22		MG belt				
B71	bkg	MG belt	Gebr. Märklin	Göppingen (BW)		1941
B41	acw	MG belt	Gold & Silberscheideanstalt	Idar-Oberstein (RP)		1942
13		MG belt				
46	SU175	MG belt	Simson	Suhl (Th)		1931
76	946	MG belt	Böhmische Waffenfabrik	Strakonitz, Prag (CZ)		1940
98	cpg	MG belt	Doll & Co.	Nürnberg (By)		1941
279		MG belt				
822		MG belt	Heinrich Hülter jun.	Iserlohn (NW)		1941
4	G	MG belt	Gustloff-Werke	Suhl (Th)	Kirschke	1939
4	936	MG belt	Gustloff-Werke	Suhl (Th)	Kirschke	1940
4	dfb	MG belt	Gustloff-Werke	Suhl (Th)	Kirschke	1940
6?	swallow logo	MG belt drum	Markes & Co.	Lüdenscheid (NW)	very possible a digit after "6"	1939
Luft 2		MG drum mag.				
22	logo	MG drum mag.	HASAG	Leipzig (Sn)		1936
78	S652	MG lafette	Metallindustrie Schönebeck	Schönebeck (Sn)		1940
298	S323	MG lafette	Brandenburger Fahrrad und Motorradwerk	Brandenburg (Bb)		1936
20	64	MG loader	G. Appel	Spandau (Be)		
20	64	MG loader	G. Appel	Spandau (Be)		1939
20	cnx	MG loader	G. Appel	Spandau (Be)		1940
67	64	MG loader	G. Appel	Spandau (Be)		1939
727	745	MG loader	Rudolf Stähely	Wuppertal (NW)		
727	97E	MG mount tool				

727	hgj	MG mount tool	Carl Kirchmann	Heiligenhaus (NW)		
159	bla	MG sling	E. G. Leuner	Bautzen (Sn)		1943
C10	ghg	MG tool	Klett und Trapp	Zella-Mehlis (Th)		
14	kar	MG tool	Fahrion	Stuttgart (BW)		
147		MG tool				
47	cey	MG tool bag	Karl Budischowsky	Wien (AT)		1941
47	cft	MG tool bag	Paul Klopfer	Wien (AT)		1941
286		MG tool bag	Carl Ackva	Bad Kreuznach (RP)		1939 – 40
204	evg	MG tool pouch	Max Oswald	Karlsruhe (BW)		
14	hoz	MG winter trigger	Bernhard Zade	Berlin (Be)		
765	bab	MG wooden stock	Wilhelm Sedlbauer	München (By)		
234		MG08 water box				
46	S	MG13	Simson	Suhl (Th)		1932 – 33
4	S – logo	MG13 + MG belt	Simson	Suhl (Th)	Kirschke	1934 – 36
6	S – logo	MG13 incl. mag	Simson	Suhl (Th)		1933 – 34
63	S/42	MG13 mag.	Mauser Werke	Oberndorf (BW)		1935
115	„S“	MG13 mag.				1935
116	„S“	MG13 mag.				1935
211	S/42	MG13 mag.	Mauser Werke	Oberndorf (BW)		1935
214	“S”	MG13 mag.				1935
4	BSW	MG13 mag.	Berlin-Suhler Waffenwerke	Suhl (Th)	Kirschke	1938 – 39
Luft 2		MG15	Heinrich Krieghoff	Suhl (Th)		1938 – 39
Luft 1	hhg	MG15 barrel	Rheinmetall-Borsig	Berlin Tegel (Be)		1939, 41
Luft 1	hhg	MG15 barrel	Rheinmetall-Borsig	Berlin Tegel (Be)		1939, 41
Luft 20	hhg	MG15 barrel	Rheinmetall-Borsig	Berlin Tegel (Be)		1941
Luft 24	ar	MG15 barrel	Mauser Werke	Borsigwalde (Be)		1941

Luft 64	wa	MG15 double mag.	HASAG	Leipzig (Sn)		1942
6	logo	MG15 mag.	Simson	Suhl (Th)		1934 – 35
Luft 2	fzs	MG15 parts	Heinrich Krieghoff	Suhl (Th)		
11	A, logo B, 5A	MG34	Rheinmetall-Magget	Tegel (Be)		1939 – 40
11	cra	MG34	Rheinmetall-Magget	Tegel (Be)		1940 – 43
26	S/243	MG34	Mauser Werke	Borsigwalde (Be)		1938 – 40
26	ar	MG34	Mauser Werke	Borsigwalde (Be)		1941 – 42
39	A	MG34	Rheinmetall-Magget	Tegel (Be)		1937 – 38
43	S	MG34	Simson	Suhl (Th)		1932
63	dot	MG34	Waffenw. Brünn	Brünn (CZ)		1941 – 45
67	S	MG34	Simson	Suhl (Th)		1932
623	bnz	MG34	Steyr-Daimler-Puch	Steyr (AT)		1940 – 41
4	G	MG34	Berlin-Suhler Waffenwerke	Suhl (Th)	Kirschke	1939
4	936	MG34	Gustloff-Werke	Suhl (Th)	Kirschke	1939 – 40
4	dfb	MG34	Gustloff-Werke	Suhl (Th)	Kirschke	1940 – 43
34	hvg	MG34 – 42 buttstock	De Limon Fluhme	Düsseldorf (NW)		1944
808		MG34 barrel				
647	brc	MG34 barrel container	Fr. Weber & Co.	Berlin (Be)		1943
815	98E	Mg34 bipod	Steyr, Werk Steyr	Steyr (AT)		
4	dfb	MG34 bipod	Gustloff-Werke	Suhl (Th)	Kirschke	1941
607	14A	MG34 bolt	Waffenw. Brünn	Bystrica (SK)		
A43		MG34 bolt part				
C10		MG34 bolt part				
13		MG34 bolt part				

238		MG34 bolt part				
359		MG34 bolt part				
7		MG34 buttstock bakelite	metal marked "bzh"			1941
14	avb	MG34 cleaning fluid can	Prestag	Berlin (Be)		1941
300	bdk	MG34 cleaning fluid can	Schneiderwerke, St. Ingbert	Saar (Sl)		1943
778		MG34 cleaning fluid can				
20	cnx	MG34 flashhider	G. Appel	Spandau (Be)		
2	fzs	MG34 leather pouch	Heinrich Krieghoff	Suhl (Th)		
195	dqc	MG34 part	Eugen Ising	Bergneustadt (NW)		
280	cpw	MG34 part	Claes & Co.	Mühlhausen (Th)		
17		MG34 part, early				
88		MG34 part, early				
18		MG34 parts				
79		MG34 parts				
214		MG34 parts				
497	bpr	MG34 parts	J. Grossfuss	Döbeln (Sn)		
14	G.G. &Co.	MG34 spring				1940
14	kgw	MG34 spring container	G. Goliash & Co.	Berlin (Be)		1941
147		MG34 spring container				
750	hvq	MG34 stock	Fagus-Werk	Alfeld (Ni)		
4	dfb	MG34 tool	Gustloff-Werke	Suhl (Th)	Kirschke	
727		MG34 tool bag	Karl Barth	Waldbröhl (NW)		1939

612		MG34 trigger				
4	BSW	MG34, MG belt	Berlin-Suhler Waffenwerke	Suhl (Th)	Kirschke	1936 – 39
11	cra, swd	MG42	Maget	Tegel (Be)		1942 – 45
26	ar	MG42	Mauser Werke	Borsigwalde (Be)		1943 – 44
26	dd	MG42	Mauser Werke	Borsigwalde (Be)		1945
47	bpr	MG42	Johannes Grossfuss	Döbeln (Sn)		1942
47	cra	MG42	Maget	Tegel (Be)		1942
623	bnz, swj	MG42	Steyr-Daimler-Puch	Steyr (AT)		1942 – 45
88	cyq	MG42 barrel	Spreewerke	Berlin (Be)		
642	hyo	MG42 barrel chrome	Heinrich Reining	Düsseldorf (NW)		
277	htu	MG42 battery box	Strauss & Co.	Schmölln (Th)		
355	hec	MG42 bipod	Steinbach & Vollmann	Heiligenhaus (NW)		
727	hec	MG42 bipod	Steinbach & Vollmann	Heiligenhaus bei Velbert (NW)		1943
4	dfb	MG42 bipod	Gustloff-Werke	Suhl (Th)	Kirschke	1944
177		MG42 buffer part				
815	kur	MG42 case extractor				
519	cof	MG42 part	Carl Eickhorn	Solingen (NW)		
147	bpr	MG42 parts	J. Grossfuss	Döbeln (Sn)		1942
1	rea	MG42 receiver for Gustloff				1944 – 45
54	hvg	MG42 stock	De Limon Fluhme	Düsseldorf (NW)		
14	kdr	MG42 tool	Georg Stenzel	Berlin (Be)		
42		MG42 tool	Hommel Werke			
145		MG42 tool	B			
519	cof	MG42 tool	Carl Eickhorn	Solingen (NW)		
815		MG42 tool	Gustloff-Werke	Weimar (Th)		fg = 1943

147	cof	MG42 top cover	Carl Eickhorn	Solingen (NW)		
380		MGZ 34	Voigtländer	Braunschweig (Ni)		
217		microscope	Korth	Berlin (Be)		
741		microphone				
351	RR 459	mine fuse	Brandenburgische Metallverarbeitung	Berlin (Be)		1939
540		mine fuse	RR 507	Bielefeld (NW)		1939
727		mine tool				
223	ejc	mines	Preussag	Rüdersdorf (Bb)		1942
319	cdf	mines	Weseler Maschinenbau	Wesel (NW)		1944
455	BB	MKb42 mag.				1942
300	jwa	MKb42 mag. pouch	Moritz Stecher	Freiberg (Sn)		
815	kur	MKb42, MP44 mag.	Steyr, Werk Graz	Graz (AT)		1943 – 45
310		morse key				
338		morse key				1937
637	aqs	mortar fuse	Süddeutsche Armaturenfabrik	Heidenheim (BW)		1943
822		motor cycle	Phänomen	Zittau (Sn)		1941
522		motorcycle	Phänomen-Werke	Zittau (Sn)		1941
727		motorcycle tool	Tecalemit			
C10	ayf	MP 40 mag. loader	Erma	Erfurt (Th)		
279	tjg	MP3008		Hamburg area		1945
383	TJK	MP3008				1945
189		MP35 mag				
37	122	MP38	Haenel	Suhl (Th)		1940
280	27, ayf	MP38	Erma	Erfurt (Th)		1938 – 41
37	122, fxo	MP38u.40 mag. and loader	Haenel	Suhl (Th)		1938 – 42
513		MP38u.40 mag. Po.	A. Grill	Wien (AT)		1941

37	122, fxo	MP40	Haenel	Suhl (Th)		1940 – 43
280	27, ayf	MP40	Erma	Erfurt (Th)		1940 – 43
623	bnz	MP40	Steyr-Daimler-Puch	Steyr (AT)		1941 – 44
446	eyp	MP40 – MP44 pouch	Rudolf Vordemberge	Osnabrück (Ni)		1944
B43		MP40 floorplate				
750	eqr	MP40 leather mag. Pouch	G. Passier	Hannover (Ni)		1942
37	fxo	MP40 loader	Haenel	Suhl (Th)		1941
706	agp	MP40 loader	Eisenwerke G. Meurer	Tetschen (CZ)		1940
B37	bte	MP40 mag.	Frank'sche Eisenwerke	Niederscheid (He)		1941 – 42
C86	bte	MP40 mag.	Frank'sche Eisenwerke	Niederscheid (He)		1943
A98	gqm	MP40 mag.	Loch & Hartenberger	Idar-Oberstein (RP)		1943 – 44
145	gqm	MP40 mag.	Loch & Hartenberger	Idar Oberstein (RP)		1942
815	98E	MP40 mag.	Steyr, Werk Steyr	Steyr (AT)		1940 – 42
815	kur	MP40 mag. and loader	Steyr, Werk Graz	Graz (AT)		1942 – 44
C10	ghn	MP40 mag. loader	Carl Ullrich	Oberschönau (Th)		1940
815	98E	MP40 mag. Loader	Steyr, Werk Steyr	Steyr (AT)		1941
A86		MP40 mag. Part				
416	gqm	MP40 mag. part	Loch & Hartenberger	Idar-Oberstein (RP)		
837		MP40 mag. parts				
86	bdr	MP40 mag. pou.	R. Ehrhardt	Pössneck (Th)		1942
204	hcg	MP40 mag. pouch	Alex & Hugo Feldhoff	Erkrath (NW)		1944
165		MP40 parts				
A44	cos	MP40 parts	Merz Werke	Frankfurt (He)	See 44 ?	1940 – 42

B66	clg	MP40 pouch	Ernst Melzig	Liegnitz (PL)		1943
44	cos	MP40 rec.	Merz Werke	Frankfurt (He)	certain see A44	1943
321	cox	MP40 sling	Otto Ernst Busch	Eisleben (SA)		1943
99	dpf	MP40 spare parts box	B. & H. Reinert	Spiegelau (By)		1943
254	cnd	MP40 trigger housing	National Krupp Registrier Kas-sen	Berlin-Neu-kölln (Be)		1943
37	C.G.Haenel	MP41	Haenel	Suhl (Th)		1941, 44
37	HAENEL, 122	MP41 mag. and loader	Haenel	Suhl (Th)		
37	fxo	MP44	Haenel	Suhl (Th)		1943 – 45
37	ce	MP44	Sauer und Sohn	Suhl (Th)		1943 – 45
623	bnz	MP44	Steyr-Daimler-Puch	Steyr (AT)		1944 – 45
B92 892?	Qlw	MP44 / StG44 mag.				1944 – 45
1	Z	MP44 bolt				1945
4	dfb	MP44 bolt, MG42	Gustloff-Werke	Suhl (Th)	Kirschke	1943 – 44
4	svq	MP44 bolt, MG42	Gustloff-Werke	Suhl (Th)	Kirschke	1945
815	tbv	MP44 mag				1945
C86	bte	MP44 mag.	Frank'sche Eisenwerke	Niederscheid (He)		
A98	gqm	MP44 mag.	Loch & Hartenberger	Idar-Oberstein (RP)		- 45
37	fxo	MP44 mag.	Haenel	Suhl (Th)		1942 – 45
214	qnw	MP44 mag.		Lübeck (SH)		1944
255	ctd	MP44 mag.	Anton Reiche	Dresden (Sn)		
280	ayf	MP44 mag.	Erma	Erfurt (Th)		1944
513	gaq	MP44 mag. Po.	Otto Stephan	Mühlhausen (Th)		1944
513	ojx	MP44 mag. Po.	Dt. Kunstlederwerke	Wolfgang, Hanau (He)		1945
204		MP44 mag. pouch				1944

706	jwa	MP44 mag. pouches	Moritz Stecher	Freiberg (Sn)		
280	qlv	MP44 mag., MP44 parts				1944 – 45
A44	cos	MP44 parts	Merz Werke	Frankfurt (He)		1942 – 45
26	ar	MP44 piston	Mauser Werke	Borsigwalde (Be)		1944
1		MP44 receiver				1945
C10	an	MP44 receiver part	C. Beuttenmüller	Bretten (BW)		1945
359		MP44 small parts				1944 – 45
556	eeu	MP44 stock part	Westthuring Metallfabriken	Schmalkalden (Th)		1944 – 45
254		MP44 trigger housing	National Krupp Registrier Kassen	Berlin-Neukölln (Be)		1944 – 45
21	awt	MP44 triggergroup	Württembergische Metallwarenfabrik	Geislingen – Steige (BW)		1943 – 45
288	afv	MP44, StG44	Hugo Schiffer	Lüdenscheid (NW)		1945
580		ohm meter	Hartmann & Braun			
542		oil can	KMF			
480		oil-can				
BA4956		on Focke-Wulf	W. u. H. Gessner	Berlin (Be)		
A1223, 154		on Messerschmitt BF 109 F4/Z	Wiener-Neustädter Flugzeugwerke		Abnahme is A1223 and 154 – what does it mean?	1941
BAL 1027		on Messerschmitt BF-110				
BAL 1894		on Messerschmitt Bf-110	marked D. B. A. G = Daimler-Benz ?			

77		on Steyr produced small arms	F. B. Radom	Radom (PL)	In-spected in Poland ?	
145		optic device	Opticotechna	Prerau (CZ)		
543	bxx	optical part	Askania-Werke AG	Berlin – Mariendorf (Be)		1940
204		optics				
380		optics case	Gebr. Wichmann	Berlin (Be)		
885		outboard engine	Audi	Zwickau (Sn)		
Luft 2		P08	Heinrich Krieghoff	Suhl (Th)		1936 – 45
6		P08	Simson	Suhl (Th)		1925
63	S/42	P08	Mauser Werke	Oberndorf (BW)		1935 – 39
63	42	P08	Mauser Werke	Oberndorf (BW)		1939
66		P08	D. W. M.	Berlin (Be)		1929
66		P08	Mauser and Simson rew. P08			1930 – 33
66		P08	Heinrich Krieghoff	Suhl (Th)		1934 – 40
66	fzs	P08	Heinrich Krieghoff	Suhl (Th)		1940 – 42
83	S/42	P08	Mauser Werke	Oberndorf (BW)		1938 – 39
211		P08	Mauser Werke	Oberndorf (BW)		1935
655	42	P08	Mauser Werke	Oberndorf (BW)		1939 – 41
4		P08	D. W. M	Berlin (Be)	Kirschke	1920 – 21
Luft 2		P08 – Kü				
49		P08 .22 cal. Conversion kit	Erma	Erfurt (Th)		
788	bml	P08 + P38 hol.	Hans Römer	Neu-Ulm (By)		1941, 43, 44
Luft 2		P08 hol.	H. Eger & Linde	Schmalkalden (Th)		1936, 37, 39, 40
14	emj	P08 hol.	Adalbert Fischer	Berlin (Be)		1940 – 42

14	fuq	P08 hol.	Curt Vogel, Lederwarenfabrik	Cottbus (Bb)		1941 – 42
16		P08 hol.	Kimnach & Brunn	Kaiserslautern (RP)		1939
18		P08 hol.	Adalbert Fischer	Berlin (Be)		
18		P08 hol.	G. Reinhardt	Berlin (Be)		1922
18		P08 hol.	C. Pose	Berlin (Be)		1926
23	bml	P08 hol.	Hans Römer	Neu-Ulm (By)		1942
29		P08 hol.	R. Ehrhardt	Pössneck (Th)		1937 - 40
47	cey	P08 hol.	Karl Budischowsky	Wien (AT)		1940 – 41
94		P08 hol.	Schambach & co.	Berlin (Be)		1936
94		P08 hol.	Curt Vogel, Lederwarenwerk	Cottbus (Bb)		1938
98	gyo	P08 hol.	Hans Dinkelmeier	Nürnberg (By)		1941
101		P08 hol.	Auwaerter und Bubeck	Stuttgart (BW)		1934 – 39
101		P08 hol.	E. K. St. (Ernst Kurz, Stuttgart?)			1938 - 39
101	cdg	P08 hol.	Auwaerter und Bubeck	Stuttgart (BW)		1939, 41
101	gfg	P08 hol.	Carl Hepting	Stuttgart (BW)		1941
105		P08 hol.	Carl Heinichen	Dresden (Sn)		1934
107		P08 hol.	K. W. K.			1939
136		P08 hol.	Carl Ackva	Bad Kreuznach (RP)		1934
136		P08 hol.	Hans Deuter	Augsburg (By)		1939
141	joa	P08 hol.	Carl Heinichen	Dresden (Sn)		1941
142		P08 hol.	Carl Heinichen	Dresden (Sn)		1935 – 36, 38
142		P08 hol.	Otto Reichel	Lengefeld (Sn)		1935 – 39
142		P08 hol.	Gebr. Klinge	Dresden (Sn)		1936 – 38
142		P08 hol.	Stecher, Moritz	Freiberg (Sn)		1937
142		P08 hol.	Karl Böcker	Waldbröhl (NW)		1939
145	logo	P08 hol.	Kritzler KG	Köln-Rebberoth (NW)		1937
159		P08 hol.	E. G. Leuner	Bautzen (Sn)		1938,3 9, 41,42

163	dtu	P08 hol.	G. J. Ensink	Ohrdruf (Th)		1939, 41
170		P08 hol.	Ehrhardt und Kirsten	Leipzig (Sn)		1938
170		P08 hol.	Albin Scholle	Zeitz (SA)		1939
170	bcb	P08 hol.	Otto Graf	Leipzig (Sn)		1940 – 42
170		P08 hol.	E .G. Leuner	Bautzen (Sn)		1941
170	bdq	P08 hol.	Ehrhardt und Kirsten	Leipzig (Sn)		1941
182		P08 hol.	Frost und Jahnel	Breslau (PL)		1938 - 41
183	dtu	P08 hol.	G. J. Entsink	Ohrdruf (Th)		1941
185	dta	P08 hol.	A. Waldhausen	Köln		1941
186	it is 186	P08 hol.	R. Ehrhardt	Pössneck (Th)		1937, 39
186	bdr	P08 hol.	R. Ehrhardt	Pössneck (Th)		1943
195		P08 hol.	Karl Böcker	Waldbröhl (NW)		1938 – 40
195	epf	P08 hol.	Karl Böcker	Waldbröhl (NW)		1940 – 41
195	dla	P08 hol.	Karl Barth	Waldbröhl (NW)		1942
195	cww	P08 hol.	Carl Weiss	Braun- schweig (Ni)		1942
195	ewx	P08 hol.	Franz u. Karl Voegels	Köln (NW)		1942 – 44
204		P08 hol.	Wilhelm Brand	Heidelberg (BW)		1936, 38, 39
204	jvf	P08 hol.	Wilhelm Brand	Heidelberg (BW)		1941
236		P08 hol.	Karl Böcker	Waldbröhl (NW)		1936
279	dtv	P08 hol.	C. O. Gehrckens	Pinneberg (SH)		1941
279	dlu, DLU	P08 hol.	E. Lüneschloss	Solingen (NW)		1943
285		P08 hol.	Carl Ackva	Bad Kreuznach (RP)		1940
286		P08 hol.	Carl Busse	Mainz (RP)		1939 – 41
286		P08 hol.	Carl Ackva	Bad Kreuznach (RP)		1940
286	jkh	P08 hol.	Carl Busse	Mainz (RP)		1941

286		P08 hol.	G. Genschow	Hachenburg (RP)		1941
300	eue	P08 hol.	Otto Reichel	Lengefeld (Sn)		1939 – 43
323		P08 hol.	A. Fischer	Guttstadt (PL)		1938 – 39
327		P08 hol.	Joseph Moll	Goch (NW)		1939
330		P08 hol.	Ruffel und Borns	Hannover (Ni)		1936
330		P08 hol.	Carl Weiss	Braunschweig (Ni)		1937 – 39
330		P08 hol.	G. Passier	Hannover (Ni)		1939
387		P08 hol.	Karl Böcker	Waldbröhl (NW)		1936
387		P08 hol.	G. Genschow&Co	Berlin (Be)		1936 – 37
387		P08 hol.	F. u. K. Voegels	Köln (NW)		1937-39
392	cww	P08 hol.	Carl Weiss	Braunschweig (Ni)		1942
400		P08 hol.	L. A. S. ?			1939
641	dlu	P08 hol.	E. Lüneschloss	Solingen (NW)		1941, 43
668	gjh	P08 hol.	R. Conte	Offenbach (He)		1942
706		P08 hol.	F. Grosse	Dresden (Sn)		1939
706	cea	P08 hol.	H. Thiele	Dresden (Sn)		1942
727		P08 hol.	Karl Barth	Waldbröhl (NW)		1939
727		P08 hol.	Karl Böcker	Waldbröhl (NW)		1939 – 40
750		P08 hol.	Carl Weiss	Braunschweig (Ni)		1939 – 40
750	eqr	P08 hol.	G. Passier	Hannover (Ni)		1940
788		P08 hol.	Hans Römer	Neu-Ulm (By)		1940
918		P08 hol.	Hans Römer	Neu-Ulm (By)		1936
920	cgu	P08 hol.	Stolla's Söhne	Wien (AT)		1941
920	clg	P08 hol.	Ernst Melzig	Liegnitz (PL)		1942
920	cey	P08 hol.	Karl Budischowsky	Wien (AT)		1942
927	jkh	P08 hol.	Carl Busse	Mainz (RP)		1941 – 42
101		P08 hol.	Hans Römer	Neu-Ulm (By)	see 107	1936
100		P08 hol. for cavalry	Kern, Kläger & Cie	Berlin (Be)		1940
195	dkk	P08 hol., 98k	F. Offermann	Bensberg (NW)		1942 – 44

		grenade launcher pouch, Astra 600 hol.				
14		P08 hol., leather goods	Otto Koberstein	Landsberg a/W – near Be (PL)		1937, 42
195	dta	P08 hol., P38 hol.	A. Waldhausen	Köln (NW)		1941 – 42
706		P08 hol., tool pouch	Carl Heinichen	Dresden (Sn)		1939
37	fxo	P08 mag.	Haenel	Suhl (Th)		1940 – 41
42		P08 tool, K98 tool				
117		P08, .22 cal. conversion kit	Erma	Erfurt (Th)		
132		P08, .22 cal. conversion kit, wooden box	Erma	Erfurt (Th)		Weimar
416		P08, P38 hol., P39(t) hol.	Deutsche Lederwerkstätten = DLWP	Pirmasens (RP)		1940
Luft 1		P24t Czech hol.	Heinrich Krieghoff	Suhl (Th)		1940
16		P27(t) hol.	R. S.			1942
76		P27(t) hol.	Ceská Zbrojovka	Strakonitz, Prag (CZ)		1939
76		P27(t) hol.	Böhmische Waffenfabrik	Strakonitz, Prag (CZ)		1939 – 42
668		P27(t) hol.				
823		P35(p)	Fabryka Broni	Radom (PL)		1939 – 44
623		P35(P) hol.				
623		P35(P) pistol	Inspected at Steyr			
Luft 7	jsd	P37 Hungarian hol.	Gustav Reinhardt	Berlin (Be)		1941 – 42
Luft 7	hsy	P37 Hungarian hol.	Franz Cobau	Berlin (Be)		1942
Luft 12	jsd	P37 Hungarian hol.	Gustav Reinhardt	Berlin (Be)		1942

Luft 21	jsd	P37 Hungarian hol.	Gustav Reinhardt	Berlin (Be)		1942
58	jhv	P37 Hungarian pist.	Metallwaren-Waffen und Maschinenfabrik	BudaPest (HU)		1941 – 42
Luft 7	cdc	P37 Hungarian. Hol.	Kern	Berlin (Be)		1941
56	jhv	P37ü pist., G98/40	Metallwaren-Waffen und Maschinenfabrik	BudaPest (HU)		1941 – 42
46	cyq	P38	Spreewerke	Spandau (Be)		1942 – 43
88	cyq	P38	Spreewerke	Berlin (Be)		1942 – 45
B17	gcx	P38 hol.	K. Brettschneider	Mähr-Schönberg (CZ)		1941 – 43
14	cny	P38 hol.	C. Pose	Berlin (Be)		1940 – 41
14	hft	P38 hol.	Becker & Co.	Berlin (Be)		1941 – 43
14	hlv	P38 hol.	Maury & Co.	Offenbach /Main (He)		1942
23	jwa	P38 hol.	Moritz Stecher	Freiberg (Sn)		
23	bml	P38 hol.	Hans Römer	Neu-Ulm (By)		1942 – 44
41	jhg	P38 hol.	G. Genschow (=Geco)	Hachenburg (RP)		1942, 44
77	lyo	P38 hol.	Kromolowski	Radom (PL)		1943 – 44
77	ndk	P38 hol.	Arba GmbH	Petrikau (PL)		1943 – 44
86	bdr	P38 hol.	R. Ehrhardt	Pössneck (Th)		1941 – 44
98	gyo	P38 hol.	Hans Dinkelmeier	Nürnberg (By)		1942
100		P38 hol.	C. Pose	Berlin (Be)		1939 – 40
101		P38 hol.	E. K. St. (Ernst Kurz, Stuttgart?), (Ehrhardt & Kirsten, Leipzig?)			1941
101	gfg	P38 hol.	Carl Hepting	Stuttgart (BW)		1941, 43
106	joa	P38 hol.	Carl Heinichen	Dresden (Sn)		1941
127 727?	cxb	P38 hol.	Joseph Moll	Goch (NW)		1940 – 41

139	dla	P38 hol.	Karl Barth	Waldbröhl (NW)		1941 – 42
159	ros	P38 hol.	E. G. Leuner	Bautzen (Sn)		1944
195		P38 hol.	Franz u. Karl Voegels	Köln (NW)		1940
195	ewx	P38 hol.	Franz u. Karl Voegels	Köln (NW)		1941 – 44
195	dkk	P38 hol.	F. Offermann	Bensberg (NW)		1942 – 43
195	dkk	P38 hol.	F. Offermann	Bensberg (NW)		1942 – 44
204	hjk	P38 hol.	Kimnach & Brunn	Kaiserslautern (RP)		1941, 43
204	gmo	P38 hol.	Rahm & Kampmann, RBNr 0/0655/0013	Kaiserslautern (RP)		1944
286		P38 hol.	G. Genschow	Hachenburg (RP)		1940
286	jhg	P38 hol.	G. Genschow	Hachenburg (RP)		1942 – 44
300	jwa	P38 hol.	Moritz Stecher	Freiberg (Sn)		1941 – 42
300	eue	P38 hol.	Otto Reichel	Lengefeld (Sn)		1942 – 43
383	bmo	P38 hol.	Hans Deuter RB.Nr. 0/0836/0029	Augsburg (By)		1941
392	cww	P38 hol.	Carl Weiss	Braunschweig (Ni)		1943
416	bml	P38 hol.	Hans Römer	Neu-Ulm (By)		1941
445	fsx	P38 hol.	Albin Scholle	Zeitz (SA)		1941 – 43
641	dlu	P38 hol.	E. Lünenschloss	Solingen (NW)		1943 – 45
668	hlv	P38 hol.	Maury & Co.	Offenbach (He)		1943 – 44
706	joa	P38 hol.	Carl Heinichen	Dresden (Sn)		1941 – 43
706	jwa	P38 hol.	Moritz Stecher	Freiberg (Sn)		1941, 42, 44, 45
727		P38 hol.	Karl Böcker	Waldbröhl (NW)		1938 – 40
727	dkk	P38 hol.	F. Offermann	Bensberg (NW)		1938 – 41
727		P38 hol.	Joseph Moll	Goch (NW)		1939 – 40

727	eqf	P38 hol.	Karl Böcker	Waldbröhl (NW)		1941
750		P38 hol.	Carl Weiss	Braunschweig (Ni)		1940
750	cww	P38 hol.	Carl Weiss	Braunschweig (Ni)		1941 – 42
757	logo	P38 hol.	Christoph Neuner	Klagenfurt (AT)		1941
795		P38 hol.				
869	fkx	P38 hol.	G. Sudbrack	Bielefeld (NW)		1943 – 44
920	cgu	P38 hol.	Stolla's Söhne	Wien (AT)		1940 – 41
920	cey	P38 hol.	Karl Budischowsky	Wien (AT)		1942, 44
930	gcx	P38 hol.	K. Brettschneider	Mähr-Schönberg (CZ)		1941 – 43
938	logo	P38 hol.	Christoph Neuner	Klagenfurt (AT)		1942 – 44
286		P38 hol. Changed for P39(t)	G. Genschow	Hachenburg (RP)		1940
706	gxy	P38 hol. horse leather equipment	Gebr. Klinge	Dresden (Sn)		1941 – 45
B66	clg	P38 hol., HP hol.	Ernst Melzig	Liegnitz (PL)		1942 – 44
145	jln	P38 hol., P08 hol.	Deutsche Lederwerkstätten	Pirmasens (RP)		1942 – 44
210	cxb	P38 hol., pouch for grenade launcher	Joseph Moll	Goch (NW)		1941 – 44
18		P38 locking block for Spreewerke				1942
358	<i>not existing</i>	P38 magazine				
76	fnh	P38 pist parts, P27(t) hol.	Böhmische Waffenfabrik	Strakonitz, Prag (CZ)		1941 – 45
706	jvd	P38 pist. mag.	Erste Nordböhmische Metall.w.f.	Nieder-Einsiedel (CZ)		1942 – 45
182	ftc	P38p hol.	Frost und Jahnel	Breslau (PL)		1942
47	cgu	P39(t) hol.	Stolla's Söhne	Wien (AT)		1940

47	cga	P39(t) hol.	Landeslieferungs-genossenschaft für Wien	Wien (AT)		1941
727		P39(t) hol.	Joseph Moll	Goch (NW)		1940
757		P39(t) hol.	Christoph Neuner	Klagenfurt (AT)		1940
179	JKB	P39(t), (CZ38) hol.	Carl Busse (?)	Mainz (RP)		1940
839	a.s.w.	PaK 38 sight	Arno Wallpach	Salzburg (AT)		1942
813		PAK ammo				
495		panzerbüchse 39 part				
109	aux	panzerbüchsepat.	Polte	Magdeburg (ST)		1941 – 42
618	P315	panzerbüchsepatrone	Märkisches Walzwerk	Strausberg (Bb)		1939
700	P, aux	panzerbüchsepatrone 7,92x94	Polte	Magdeburg (SA)		1939 – 41
89	kxs	panzerschreck	Schicker & Co.	Fürth-Vach (By)		
543	nbe	panzerschreck	HASAG	Tschenstochau (PL)		
A29	clu	panzerschreck, shield for panzerscheck	Enzinger-Union-Werke	Mannheim (BW)		
533		paramedic bag	Karl Bollmann	Tüttlingen (BW)		1939
Luft 5		paratrooper gravity knife	different companies			
140		part for MG optics				
240		part of V2 rocket				
502	fbu	part of V2 rocket	MABAG	Nordhausen (Th)		
542		petrol can				
522		Phänomen Granit Kübel- und	August Nowack	Bautzen (Sn)		1938

		Krankenwagen				
39		phone cable plate	HMB			1934
234		pioneer axe, pliers				1936
547		pioneer pouch	-----udbrask	---eldt		1940
72		pioneer saw	E. Winterhoff & Co.	Remscheid (NW)		1940
145		pioneer saw	F. A. Schmidt	Remscheid (NW)		
145		pioneer saw	Seeger	Offenbach /Main (He)		1936
727		pioneer saw	E. Winterhoff & Co	Remscheid (NW)		1940 – 41
14	fuq	pioneer saw sheathe	Curt Vogel, Lederwarenfabrik	Cottbus (Bb)		1942
14	dpq	pioneer tool	Bruno Mädler	Berlin (Be)		1941
130		pioneer tool	Carl Sauer	Berlin (Be)		
130		pioneer tool	IBB	Berlin (Be)		1937
641	gyr	pioneer tool	Hugo Lindner	Solingen (NW)		1941, 43
145		pioneer tools	Garantoska ?			
918	gxy	pist. hol.	Gebr. Klinge	Dresden (Sn)		1942
204		plate	BB			1936
8		pliers	Granit			1934
573		pliers	Ha-So			
606		pliers	H			
727		pliers				
874		pliers				
145		pliers for fuses				
52		pliers, tool	W. Kücke & Co	Wuppertal-Elberfeld (NW)		1937
145	gqm	pliers, tools	Loch & Hartenberger	Idar Oberstein (RP)		
162		pocket knife	Gräfrath Gebr.			
519		pocket knife	Carl Eickhorn	Solingen (NW)		
38		pocket lamp	Daimon			
652		pocket lamp	Pertrix			
94		pouch	Richter & Co.	Charlottenburg (Be)		

94		pouch	Gebr. Wichmann	Berlin (Be)		1933 ?
98	bzc	pouch	M. Hiessinger	Nürnberg (By)		1943
102		pouch	Wilhelm Brand	Heidelberg (BW)		1934
170	bcb	pouch	Otto Graf	Leipzig (Sn)		1940 – 41
279		pouch	Kroymann & Co.	Hamburg (Hh)		1937, 40
279		pouch	Sachs & Deisselberg	Hamburg (Hh)		1940
330		pouch	Heinrich Vorderberge	Osnabrück (Ni)		1937
788	dyo	pouch	J. M. Eckart	Ulm (BW)		1941
B12	dny	pouch (leather)	Karl Bollmann	Tuttlingen (BW)		1944
47		pouch for a watch	Eugen Huber	München (By)		1934
400		pouch for clock	Böttcher & Renner	Nürnberg (By)		1937
387		pouch for flares				
47		pouch for ignition device	Schaffler & Co.	Wien (AT)		1940
111		pouch for signal ammo	Sachs & Deissenberg	Hamburg (Hh)		1935
101	evg	pouch for telephone	Max Oswald	Karlsruhe (BW)		1941
142		pouch for telephone	B & G			1936
86	bdr	pouch for telephone	R. Ehrhardt	Pössneck (Th)	see WaA 472	1941
94		pouch, first aid	Paul Klopfer	Berlin (Be)		1937
455		pouch, first aid	K. Hollmann			1937
Luft 26		pouch, leather				
8		PP hol.	G.J. Ensink & Co.	Ohrdruf (Th)		1934
170	hsu	PP hol. And other 7,65 holsters	Sparfeld	Leipzig (Sn)		1944

359	480	PP, PPK P38	Carl Walther	Zella-Mehlis (Th)		1939, 40
359	ac	PP, PPK, P38	Carl Walther	Zella-Mehlis (Th)		1940 – 45
34		PPK hol.				1943
721		PPK pist. Hol.	RBNr 0/1250/0011	Kreis König- grätz (CZ)		1945
153		protecting part	WAE ?			1935
538	cme	protractor	Wichmann	Berlin (Be)		
764		quartz	Zeiss	Jena (Th)		
67	gpo	quiver for MG42 bar- rel	Fröhlich & Wol- ter	Beierfeld (Sn)		1943
754		R12 motor- cycle	BMW	München (By)		1941
763		R75 motor- cycle	BMW	Eisenach (Th)		1942
444		radio	R			1938
504		radio	Blaupunkt	Berlin (Be)		1943
617		radio				1939
858		radio	Philips-Valvo	Aachen (NW)		
BAL 1882		radio	Sachsenwerk	Radeberg (Sn)		
745		radio bat- tery	Otto Gross	Hamburg (Hh)		1942
836		radio set				1943
38		radio tube	Alfred Luscher	Dresden (Sn)		
38		radio tube	Sachsenwerk	Radeberg (Sn)		
89		radio tube	Telefunken RöW	Erfurt (Th)		
745		radio tube	Valvo	Hamburg (Hh)		
517		radio tube	Telefunken		see 617	
BAL 716		radio tubes	Telefunken RöW	Berlin (Be)		
BAL 860		radio tubes	Philips, Radione	Wien (AT)		
BAL 865		radio tubes	Philips	Eindhoven (NL)		1941 – 42
BAL 957		radio tubes	C. Lorenz AG	Berlin (Be)		
BAL 1641		radio tubes	Philips	Eindhoven (NL)		1942
BAL 1790		radio tubes	Philips	Eindhoven (NL)		1943 – 44

BAL 1948		radio tubes	Philips	Eindhoven (NL)		1942 - 43
20	cnx	range finder	G. Appel	Spandau (Be)		
326		rangefinder case				
300		red cross box	Heinrich Var----- - ??	Osnabrück (Ni)		1939
84		rew. LMG ammo box	Kongsberg Våpenfabrik	Kongsberg (NO)		
387		reworked MP40 mag	Haenel	Suhl (Th)		
611		RG 34 cln. kit				
20	64	RG PzB 38/39	G. Appel	Spandau (Be)		
14	cmr	RG34 cln. kit	Hawig	Berlin (Be)		1941 - 45
20		RG34 cln. kit	G. Appel	Spandau (Be)		1934 - 38
20	64	RG34 cln. kit	G. Appel	Spandau (Be)		1938 - 41
20	cnx	RG34 cln. kit	G. Appel	Spandau (Be)		1941 - 45
20	arr	RG34 cln. kit	Braun- schweigische Blechwarenfab- rik	Braun- schweig (Ni)		1942 - 44
57	Ky	RG34 cln. kit	Kyffhäuserhütte (Paul Reuss)	Artern (Th)		1940 - 41
57	ayw	RG34 cln. kit	Kyffhäuserhütte (Paul Reuss)	Artern (Th)		1941
57	arr	RG34 cln. kit	Braun- schweigische Blechwarenfab- rik	Braun- schweig (Ni)		1941 - 44
61		RG34 cln. kit	G. Appel	Spandau (Be)		1938
67		RG34 cln. kit	G. Appel	Spandau (Be)		1938
94		RG34 cln. kit	Hawig	Berlin (Be)		1935 - 39
100		RG34 cln. kit	Hawig	Berlin (Be)		1940
109	KH	RG34 cln. kit	Kyffhäuserhütte (Paul Reuss)	Artern (Th)		1935
134		RG34 cln. kit	G. Appel	Spandau (Be)		1935

219		RG34 cln. kit	Mundlos AG	Magdeburg (SA)		1935 – 36
225	Ky	RG34 cln. kit	Kyffhäuserhütte (Paul Reuss)	Artern (Th)		1936 – 40
243		RG34 cln. kit	Mundlos AG	Magdeburg (SA)		1938 – 40
243	ab	RG34 cln. kit	Mundlos AG	Magdeburg (SA)		1940 – 42
265	Ky	RG34 cln. Kit	Kyffhäuserhütte (Paul Reuss)	Artern (Th)		1936 – 37
313	ab	RG34 cln. kit	Mundlos AG	Magdeburg (SA)		1943 – 44
325		Rg34 cln. kit	G. Appel	Spandau (Be)		1936
392	arr	RG34 cln. kit	Braunschweigische Blechwarenfabrik	Braunschweig (Ni)		1942 – 45
392	rco	RG34 cln. kit	Braunschweigische Blechwarenfabrik	Braunschweig (Ni)		1945
439		RG34 cln. kit	Mundlos AG	Magdeburg (SA)		1936 – 37
442	Ky	RG34 cln. kit	Kyffhäuserhütte (Paul Reuss)	Artern (Th)		1936 – 39
445	Ky	RG34 cln. kit	Kyffhäuserhütte (Paul Reuss)	Artern (Th)		1937
453		RG34 cln. kit	G. Appel	Spandau (Be)		1937
500		RG34 cln. kit	G. Appel	Berlin-Spandau (Be)		1937 – 38
536		Rg34 cln. kit	Mundlos AG	Magdeburg (ST)		1937 – 38
815	Ky	RG34 cln. kit				1940
815	bnz	RG34 cln. kit parts	Steyr, Werk Steyr	Steyr (AT)		
750	arr	RG34 cln. kit, metal ammo box	Braunschweigische Blechwarenfabrik	Braunschweig (Ni)		1941 – 42
A10	wa	rifle grenade	HASAG	Leipzig (Sn)		1944
721	lze	rifle grenade launcher	Friedrich & Franz Vasek	Prag (CZ)		

469	eah	rifle grenade launcher sight	Meinel-Scholer	Klingenthal (Sn)		
300	eah	rifle grenade launcher sight, flare gun	Meinel-Scholer	Klingenthal (Sn)		
13	fng	rifle grenade launcher	Anker-Werke	Bielefeld (NW)		
14	dmy	rifle grenade launcher	Fritz Werner	Marienfelde (Be)		
20	cnx	rifle grenade launcher	G. Appel	Spandau (Be)		
140	ch	rifle grenade launcher 7,92x94	F. N.	Lüttich (BE)	Zorn	
882	cpj	rifle grenade launcher, 7,92x94	Havelwerk	Brandenburg (Bb)		1941
269	dom	rifle grenade part	Westfälische Metallindustrie	Lippstadt (NW)		
318		rocket part				1944
383		rocket part				1944
327		S4 250 motorcycle	Steyr-Daimler Puch	Graz (AT)		1941
2		safety belt	-----cherei			1936
374		safety for K98k Mauser O.				1936
548		sapper ignitor	Siemens			1938
39		sapper ignitor handle				1938
14	fuq	sapper pouch	Curt Vogel, Lederwarenfabrik	Cottbus (Bb)		1941
841	clc	sapper tool	Richard Herder	Solingen (NW)		1942
286	jhg	Sauer 38H hol.	G. Genschow	Hachenburg (RP)		1942
37		Sauer 38H pist.	Sauer und Sohn	Suhl (Th)		1940 – 45

727	jhg	Sauer mod. H holster	G. Genschow	Altstadt-Hachenburg (RP)		1941
86 186 ?	bdr	Sauer38H hol., Astra 600 hol.	R. Ehrhardt	Pössneck (Th)		1942 – 44
176?		scales				
14	jvb	scope can	Wessel & Müller	Luckenwalde (Bb)		
542	jvb	scope can, metal container	Wessel & Müller	Luckenwalde (Bb)		
412		scope leather	Geyber & Co.	Berlin (Be)		
414		scope leather				
414	bmj	scope leather	Hensoldt	Wetzlar (He)		1938,4 2 – 43
Luft 2	fzs	servers pouch	Heinrich Krieghoff	Suhl (Th)		
735		sharpening steel				1942
183		sharpening steel	Volk-Stahl			1939
195		shaving bowl				
125		shell container	FcoW or FWCo			1936 – 37
187	brg	shield for panzer-schreck	H. W. Schmidt	Döbeln (Sn)		1944
8		shovel	John AG			1934
98	cpq	sight for gren. launcher	Rheinmetall-Borsig	Guben (Bb)		
88	adb	sight for K98 gren. Launcher	Markneukirchner Metallbearbeitungs GmbH	Markneukirchen (Sn)		
449	zs	silencer 7X				1938
770		siren	Elektor	Esslingen (BW)		1944
170		sling for lantern				1942
668	gyb	sling for MG	W. F. Bauer	Offenbach (He)		1943
73		small glass tube				

8		small pist. hol.	Carl Weiss	Braunschweig (Ni)		1940
62		S-mine	Hagenuk			1938
142		soldering lamp	H			1937, 39
170	bmc	soup container	Geithainer Emaillierwerk	Geithain (Sn)		1943
145		spade	IAIHv ?			1937
77		speed-loader for MG13 mag.	EE			
820		spoon – fork	VDNS			1941
938	logo	Star B hol.	Christoph Neuner	Klagenfurt (AT)		1942 – 44
101	nka	Star B hol., Brng.HP hol.	J. J. Schlayer	Reutlingen (BW)		1943
195	dla	Star mod. B hol.	Karl Barth	Waldbröhl (NW)		1943
D20		Star mod. B pist.	Star B. Echeverria S.A.	Eibar (ES)		
251		Star mod. B pist.	Star B. Echeverria S.A.	Eibar (ES)		
182		StarB hol.	Frost und Jahnel	Breslau (PL)		1938 – 41
182	ftc	StarB hol. P08 hol.	Frost und Jahnel	Breslau (PL)		1938, 40, 41
88	atf	steel box	J. A. John AG	Erfurt (Th)		
455	an	steel box	C. Beuttenmüller & Cie	Bretten (BW)		1943
763		steel box				
A80	dou	steel shell case	Waffenw. Brünn	Bystrica (SK)		1944
A44	sup	StG44 parts	Merz Werke	Frankfurt (He)		1945
37		stirrup	Linden & Funke			
402	awb	stirrup	Schmöle & Co	Menden (NW)		1942
781		stirrup				
141		sugar pouch				
326	fwq	support frame for rangefinder	Saalfelder Apparatbau	Saalfeld/Saale (Th)		1943
150		table lamp	ErGi			1938
B31		tank head set	BSN			1943

B31		tank head set	SABA	Villingen (BW)		1944
B31		tank head set	Dfh.f.			1945
14		tank head set metal				
916	jeo	tank periscope	Vorrichtung- & Gerätebau	Berlin (Be)		1944 (?)
A39		tape measure	W.H.			1940 – 41
29		tape measure				1937 - 38
30		tape measure				1934 - 35
62		tape measure				1940
63	gqm	tape measure	Loch & Hartenberger	Idar-Oberstein (RP)		
105		tape measure	H			1934
142		tape measure	Massi			1935 – 38
170		tape measure				
202		tape measure	Geier	Lengerich (NW)		
204		tape measure	U			1937, 39, 43
300		tape measure	Massi			1939
538		tape measure				1939
542	gcb	tape measure	Adolf Grohmann & Sohn	Würbenthal Süd (CZ)		
302		tape measure – 25m				
142		tea/94offee-container	LGA			1937
142	jsd	tea-container	Gustav Reinhardt	Berlin (Be)		1937 – 38
69		telephone	N & K			1936 – 37
586		telephone	NT			
604		telephone				
472	bdr	telephone equipment	R. Ehrhardt	Pössneck (Th)	see 86	1941

27		telephone parts	Siemens & Halske			1942
315		telephone system	OGG ?			1937
BAL 391		teleprinter	Siemens & Halske	Berlin (Be)		
448		tellermine 35				
750		test device				
173	gjj	test instrument	Karl Seeger	Offenbach /Main (He)		1941
142		theodolite				1937
217		tilt indicator				
8		tool	Granit			1934
10		tool	NM			
114		tool	Irioinal ? Helio			
131		tool	Mauser Werke	Oberndorf (BW)		1934
163		tool				1935
163		tool	R G??t			1937 – 38
215		tool	J.V.?			
286	dos	tool	MAN	Augsburg (He)		1941
286		tool				1941
706	jvk	tool	Curt Holzberger	Dresden (Sn)		
764		tool	NSU	Neckarsulm (BW)		
4	936	tool	Gustloff-Werke	Suhl (Th)	Kirschke	
300	dvN	tool – thread	H. F. Schnicke	Chemnitz (Sn)		1941, 43
39		tool (tank)				
706	cea	tool bag for MG34	H. Thiele	Dresden (Sn)		1942
815	cgv	tool for horseshoe	Stubair Kleisen	Fulpmes/Tirol (AT)		
706		tool I.I.G.18				
63		tools	Schmidt			
4	BSW	tools	Berlin-Suhler Waffenwerke	Suhl (Th)	Kirschke	
300		transport box				
789	fcv	transport wagon, 10 cm mortar	Schmidt, Kranz & Co.	Nordhausen (Th)		1940

359		tree screw for the scissor telescope	Carl Walther	Zella-Mehlis (Th)		1939
214	qnw	triggerg. + winter trigger for K98k		Lübeck (SH)		1942 – 44
20	cnx	tripod	G. Appel	Spandau (Be)		
70		truck	Magius	Ulm (BW)		1941
598		truck	Hansa	Bremen (Hb)		1938
659		truck	Steyr Sauer Werke	Wien (AT)		1944
683		Truck	Steyr	(AT)		1940
BAL 1020		truck designed as a workshop	Matra-Werke	Frankfurt (He)		1940
395		truck-body	Büssing NAG	Elbing (PL)		1938
591		trucks, cars	Daimler-Benz	Sindelfingen (BW)		1940
B77		unknown pistol holster				
760	ajm	V2 fuel tank valve	Albert Knauth Pumpenfabrik	Breslau (PL)		
470		vehicle	Stoewer-Werke	Stettin (PL)		1940
212		vehicles	E. H. von Lienen	Bochum (NW)		1936
308		very late K43 parts				1945
409		volt-meter, radio tube				
607		VZ24 assembling	Waffenw. Brünn	Bystrica (SK)		1940
A80		VZ24 rew. Bay.	Waffenw. Brünn	Bystrica (SK)		1941
63		VZ24 rew. bay.	Waffenw. Brünn	Brünn (CZ)		1940
63	dot	VZ24 rew. Bay.	Waffenw. Brünn	Brünn (CZ)		1942 – 43
607		VZ24 rew. Bay.	Waffenw. Brünn	Bystrica (SK)		1940
100	bmo	Wal. PPK hol.	Hans Deuter	Augsburg (By)		1945
102		weapon measuring instrument				

359		weapons tool				
54		weights	D * R			
198	ecy	Wgr.z.38c fuse	Fouquet & Franz	Rottenburg (BW)		1943
145		wire cutter	C. Mesenhöller	Remscheid (NW)		1936, 38
163		wire cutter	Kampmann	Schmalkalden (Th)		1940
387		wire cutter	Hugo Lindner	Solingen (NW)		1937
727		wire cutter	VBW			1940
727	epd	wire cutter	Beckersche Werkzeugfabriken	Remscheid-Vieringhausen (NW)		1941
727	gyr	wire cutter	Hugo Lindner	Solingen (NW)		1941
533		wire-cutter				
136	eus	wooden ammo box	J. Ehlers	Hamburg (Hh)		1941
190	dln	wooden ammo box	Albert Haltenhoff	Odertal, bei Bad Lauterberg/Harz (Ni)		1944
204		wooden ammo box				
204	dtf	wooden ammo box	Preh	Bad Neustadt (By)		1944
285	jln	wooden ammo box	Deutsche Lederwerkstätten	Pirmasens (RP)		
295	jhv	wooden ammo box	Femaru-Fegyver-Es-Geppgyar	BudaPest (HU)		
330	GW	wooden ammo box				1937
406	P.M.	wooden ammo box				1938
640	dud	wooden ammo box	Fritz Seitz	Würzburg (By)		1941
869	kyq	wooden ammo box	August Siekmann	Löhne (NW)		
920	bpy	wooden ammo box	Hofmann & Czerny AG	Wien (AT)		1940
920	fey	wooden ammo box	Anton Ketele	Wien (AT)		1944
144		wooden box				

369	?wh	wooden box				1942
406		wooden box	Arnold			1936
662	hay	wooden box	Chr. Oestreich	Neu Isenburg (He)		1943
201	how	wooden box for 8,8 cannon	Empe-Werk	Niemens (CZ)		1943
705	kpz	wooden box for ammo	August Förster	Georgswalde (CZ)		1943
14	cgz	wooden box for cannon ammo	Eduard Hoppe Möbelfabrik	Luckenwalde (Bb)		1944
414		wooden box for scope	E. Leitz	Wetzlar (He)		
448	ewy	wooden box for threading tools	Meller Möbelfabrik	Melle (Ni)		1944
54		wooden case for Junghans clock				1939
50	edg	wurfgranate 326	J. A. Henckels Zwillingswerk	Solingen (NW)		1941
C10		yellow pouches for Danish pistol 10/21				
103		Y-straps			Etzel	
641	hec	ZB26 mag.	Steinbach & Vollmann	Heiligenhaus bei Velbert (NW)		1942
727	hec	ZB26 mag.	Steinbach & Vollmann	Heiligenhaus bei Velbert (NW)		1942
63	"K"	ZB26/30 mag.				
63	945	ZB26/30 mag.	Waffenw. Brünn	Brünn (CZ)		
188		ZB-37 MG for Spain	Waffenw. Brünn			1943 – 44

317		ZF4 wooden case				
214	duv	ZF41 mount	Berlin-Lübecker Maschinenfabri- ken	Lübeck (SH)		
37		zielfeu- ergerät 38	Haenel	Suhl (Th)		1938 – 39
483	cau	ZS/30 fuse	Kodak, Dr.Nagel-Werk	Stuttgart (BW)		1944