

On the internet:

<http://espeholt.dk/mediarkiv/waae.pdf> - sorted by WaA – then Period

<http://espeholt.dk/mediarkiv/waae-a.pdf> - sorted by Object – then Period

<http://espeholt.dk/mediarkiv/waae-b.pdf> - sorted by Factory – then Period

<http://espeholt.dk/mediarkiv/waae-c.pdf> - sorted by Place – then Period

*The list does not represent an exact “science”, but is based on observations of various items of equipment. I try to use only 100 percent sure observations - but mistakes are possible anyway.*

### **Das Heereswaffenamt**

(From various sources: Emil Leeb: Aus der Rüstung des Dritten Reiches, Handbook on German Military Forces 1945 (US War Department), Richard D. Law: Backbone of the Wehrmacht, others)

Collectors and other observers of WWII German military artifacts, especially weapons, often see small die stamps on them with a stick figure representation of the German Reich eagle and a number. Commonly referred to as “Waffenamts”, they were inspection stamps which identified the item as being inspected and passed, at some stage of its manufacturing process for the German Army. Complex items such as firearms would have multiple Waffenamts on them. When the Nazis took power in 1933, Germany started a massive rearmament program. A part of this process was the Heereswaffenamt (He.Wa.A. – Army Ordnance Office) hereafter referred to as the HWA. The beginnings of the HWA were in the Waffen- und Munitionsbeschaffungsamt of the First World War but the Waffenamt was founded officially by orders dated Nov. 8., 1919 and renamed as Heereswaffenamt on May 5., 1922.

German weapon inspections in the factories themselves were overseen by the Heeresabnahmewesen (Army Acceptance Organization), also known as the Abnahmeabteilung des Heereswaffenamts (Wa.Ab. - Acceptance Section of Army Ordnance Office) hereafter referred to as the Abnahme. This group was a subsidiary of the HWA. The Heeres-waffenamt was headed by General der Artillerie Professor Becker until sometime in 1940, when it was taken over by General der Artillerie Emil Leeb until its end in 1945.

Starting in 1935, the HWA grew along with Germany’s growing military rearmament program. With the onset of actual military operations, the HWA was dramatically expanded as the Army’s need for equipment and weapons increased rapidly.

In 1939 the Heereswaffenamt, including the Abnahme had:

		HWA (HeWaA)	Abnahme (WaAbn)
Offiziere	(Officers)	271	71

Beamte	(Officials)	352	234
Unteroffiziere	(NCO's)	174	132
Mannschaften	(Enlisted men)	<u>2800</u>	<u>2637</u>
		3597	3074

By 1940, the Abnahme had 25.000 men (estimated – based on the 1939 distribution ratios):

Offiziere	(Officers)	577
Beamte	(Officials)	1903
Unteroffiziere	(NCO's)	1074
Mannschaften	(Enlisted men)	<u>21637</u>
		25000

During its lifetime, the HWA and the Abnahme were reorganized as German needs changed. It was also subject to staffing reversals near the end of the war, and was reorganized in 1944 and again in 1945. Manpower shortages were such in the Wehrmacht, that in the middle of 1944, 8,000 Abnahme personnel were released for front line service, which cut its total personnel by one third. In the 1940 time frame the 25,000 Abnahme inspectors were in five Departments, which had 14 regional Armament Inspectorates. The Abnahme regional offices were located in: Königsberg, Breslau, Berlin, Dresden, Hannover, Erfurt, Nürnberg, Munster, Stuttgart, Vienna, Radom, Prague, Paris, and Brussels. There may have been a few additional areas in the occupied countries, but this has not been confirmed as to number or location. There was one Abnahmeinspizient (Acceptance Inspector) in each Inspectorate area, who acted through the assigned personnel (Acceptance Commissions) at the various factories. The Abnahme themselves, because of their relatively small numbers, were oftentimes helped by specially trained factory personnel to assist them at some of the factories. The Abnahme were responsible for the testing and acceptance of all weapons, ammunition, and other items before delivery to the Wehrmacht. They were instructed on what to do by Technische Lieferbedingungen (TL's) issued by the various Waffenprüfämter sections listed below:

WaPrüf 1	Ballistische und Munitionsabteilung (Ballistics and Munitions Section of Army Ordnance [Ammunition]).
WaPrüf 2	Infanterieabteilung (Infantry Section of Army Ordnance)
WaPrüf 2 I	Rifles
WaPrüf 2 II	Machine Guns
WaPrüf 2 III	General Equipment
WaPrüf 3-12	Other Items

The inspection Officers and Officials of the Abnahme that were assigned to the various armament factories were originally Wehrmacht armourers, who were given civil service status and the rank (equivalent) of a Leutnant [W] (Waffenamt Second Lieutenant). In preparation for their duties the new personnel were sent to a four week Heereswaffenmeisterschule (Army Ordnance Armourers School) in Berlin at Spandau. At the end of the training, a Technical Inspector test was given, and if it was successfully passed the applicant became an Oberleutnant [W] (Waffenamt First Lieutenant). By 1939 almost all of the personnel who had started in 1935 were promoted to Technical Inspector First Class with the equivalent

rank of Hauptmann [W] (Waffenamt Captain). As an example of how the system worked, 98K rifle production plants had an average of ten Officials employed at each factory that made the rifle. Several Ordnance and Technical Sergeants would also be assigned to each of the rifle manufacturers, as well as the Abnahme Mannschaften, and factory helpers as needed. At Mauser Werke, a very large factory, a Technical Administrator was assigned who had the rank of a Major [W]. In some cases, the acceptance location for a given area was used by surrounding factories as well, and was called an Heeresbezirk-Abnahmestelle, (Army Area Acceptance place).



Just a curiosity: In the inner yard of HWA there is WW I memorial for the fallen members of “Artillerie-Prüfungskommission” (artillery examining board) with the statue of Saint Barbara who holds a grenade in her hand. She is the patron saint for artillerymen, miners and blasters, and she has “survived” WW2.

When a Waffenamt Officer (Acceptance Inspector) assumed command of an inspection team, he received a commission number and a corresponding numbered set of

Wehrmachtabnahmestempel (common term: Waffenamt Stamps). When the Waffenamt Officer was transferred to another factory, he took his stamps with him, but left the rest of his inspection team at the factory for the next Officer. The Waffenamt Officer in charge could move from one factory to another. Some examples are: (WaA214) at the J.P. Sauer factory in Suhl in 1938, to the Berlin Lübecker Maschinenfabriken in 1939, or (WaA63) Mauser-Werke in Oberndorf a.N. (Germany) to BRNO in Czechoslovakia in 1940. These transfers were not uncommon. The total possible Waffenamt numbers ranged from 1 to probably 999, and any gaps most likely indicate a situation where no Waffenamt Inspectorates were activated. This is reflected in the actual number of known Waffenamt (Commission) numbers.

The Waffenamt stamps (dies) themselves often varied in size and sometimes design, depending on the time period when they were made or changed out. As dies were replaced, it was often with a simpler design as time went on, but with the same Waffenamt number. The different sizes and designs reflect a number of things, such as the size of the object being stamped, or the time period the die was made, or what the maker of a particular die stamp was capable of making at that time. Sometimes when old dies wore out, or broke, and could not be replaced in time, they reused old Waffenamt die stamps after modifying them. This practice is often seen with date stamps in 1944 as well, where they show only the number "4" instead of a "44". There are also a few die stamps which have an alpha character suffix in addition to the number, such as an: A, B, C, or D. And there were specialized inspection stamps used by the German Police and Luftwaffe as well. The Police stamps did not use numbers, but alpha characters instead. (Typically, it was the Police eagle along with alpha characters such as B, C, D F, K, or L). The Luftwaffe marked items have "Luft. (number)". There may be other variations as well.



See above some examples of WaA on starter tabs (from Myrvangs book about German MG's). The two first are early types. Ink stamps were used on cloth for example – beware of fakes – and the WaA could also be etched instead of being stamped.

There currently exists no official German book on Waffenamt codes as many believe. The headquarters in Wünsdorf not so far from Berlin was heavily bombed in the spring 1944 and was completely destroyed by bombing on March 15, 1945, so no archives from the Heereswaffenamt exist today, either in the USA or in Germany. After the first bomb attack the whole system was severely disrupted. It continued to function, but only marginally, until the war ended. Many factories produced war material practically to the German surrender. Some of these very late items may not show Waffenamts at all. Several factories produced weapons after the war was over, but without the Waffenamt stamps. However, there are usually other markings to differentiate them from wartime production.

Punched card. Pawlas has reprinted the so-called LK Nummern (Lochkarte – punched card numbers). The lists indicate the structure of the “Abnahme” with places and with the LK numbers – but not the die-numbers. Because of personnel shortage in the “Abnahme”-organisation, certain personnel at the factories were allowed to check the parts. This happened already in 1942, but only to a small extent. The “Betriebsabnahme” (BA) used a BA-number with 5 digits. There was also a “Werksabnahme” (W.ab) but apparently only at Telefunken. The airforce – Luftwaffe – had in the same way personnel to control parts – the so-called Bauaufsichten der Luftwaffe (BAL) – see the very last part of the list. Source: Werner Thote – Radiobote Jg. 5, Heft 29

Peter Rasmussen tells a funny story: He had about 1975 a visit by a German working for a well known German chemical company. The guest was J. G. Bayer and he had during the war inspected weapons for the Wehrmacht. Peter asked him about the function of the Waffenamt, but he answered reluctantly, because he wasn't allowed to reveal such information. Then Peter showed him a copy of the German codebook. He was chocked and said “aber das ist doch geheim” (but this is secret), and he became even more excited when he saw an enigma machine.

After such an excitement and a couple of “snaps” he became more accommodated and told that he had been a Waffenamt inspector. He had had 10 enlisted men, 2 NCO's, 1 typist and a chauffeur. The enlisted men were engineers and metal craftsmen.

They used a decrepit Opel Blitz when visiting the different factories, and sometimes they divided so one team inspected one factory and their work with one set of dies, while the rest of the group went on to another factory with the other dies. Bayer's identification was WaA27 and the whole group used that number.

Bayer's inspection team had basis in Stettin and they inspected supply for the Wehrmacht in an area in a radius about 200 kilometres from Stettin. They should sometimes inspect goods they didn't know anything about. Once a quantity of cheese. Luckily one of the NCO's father was a dairyman, so a phone call to him made it possible for the team to act quite professionally, and cheese was in a long time the main ingredient of the menu of the team.

### **Heereszeugamt**

The armory or armory was originally a building for storing weapons and other war material (arsenal). In 1940 there were 18 military districts and military equipment offices as well as two more in the “Protectorate Bohemia and Moravia”.

From 1935 to 1945, the army equipment offices of the German Reich were subordinate to the individual commands of their respective military districts and had army equipment offices in their area.

Heereszeugämter were army departments that accepted the products produced in their military district from industry, that is, they compared the military equipment with the orders, checked the tolerances and carried out functional tests. If the product was produced correctly, it was accepted and given an acceptance stamp. The army equipment offices tested everything from buttons to armor.

Due to the increasing shortage of workers, prisoners of war, forced laborers from Eastern Europe and concentration camp prisoners were also used in the military armories during the Second World War. Due to their outstanding importance for German front-line supplies, Anglo-American bomber units attacked army equipment offices and train stations in the respective cities in the fall of 1944 and spring 1945, for example the Mainz Army Equipment Office in September 1944, on which over 1,123 explosive bombs were dropped. Nevertheless, it was remarkable that the arms deliveries from the army armory to the fronts reached their absolute peak in December 1944 for almost all types of weapons. You can briefly say that HZA referred to a geographical area, while WaA relates to a person and his crew - see below for an example of an HZA marking. These marks are rarely seen.



#### **An example of using WaA**

It is clear that Germany had to have a control function for the production of weapons - especially after the beginning of the war - because in many cases slave labor was used or the production was moved to occupied countries, where the workers may not be very loyal to the Nazi forces, but it seems ridiculous that was checked: tea containers, forks, spoons and as here: boot pulls up (if that's the right word).



### **Examples of dies**

An example of an original, much used Waa die and 14 letter dies belonged to a precision engineer. The Waa number could be 539 – seen after using it on a pewter mug. The other photo shows 10 Waa-dies which have been on eBay, but the auction was canceled for some reason.



And again below an unused WaA63 stamp, also seen on eBay – and expensive. There is no WaA number on the side of the stamp.



WaA codes – WaA inspectors

The following list is made on the basis of observations from collectors both in Europe and America. It is likely that it may contain errors in some parts of it. In areas where I, or other specialists, have particular knowledge it should be relatively error free. Many of the dies used by the inspectors are very small, so it's very easy to sometimes misread the code numbers. *Please send me an E Mail, if you have detected an error in the list. Please also send me an E Mail, if you have an addition to the list. A notation of where it came from, or how certain the information is, would be appreciated.*

### **Phoney – cheat WaA markings**

I often browse through different websides to discover some new WaA markings – especially eBay Deutschland. But beware those markings are often added lately – also because it's now so easy to buy new WaA-stamps. I will show you an example:



Only a part of the description is:

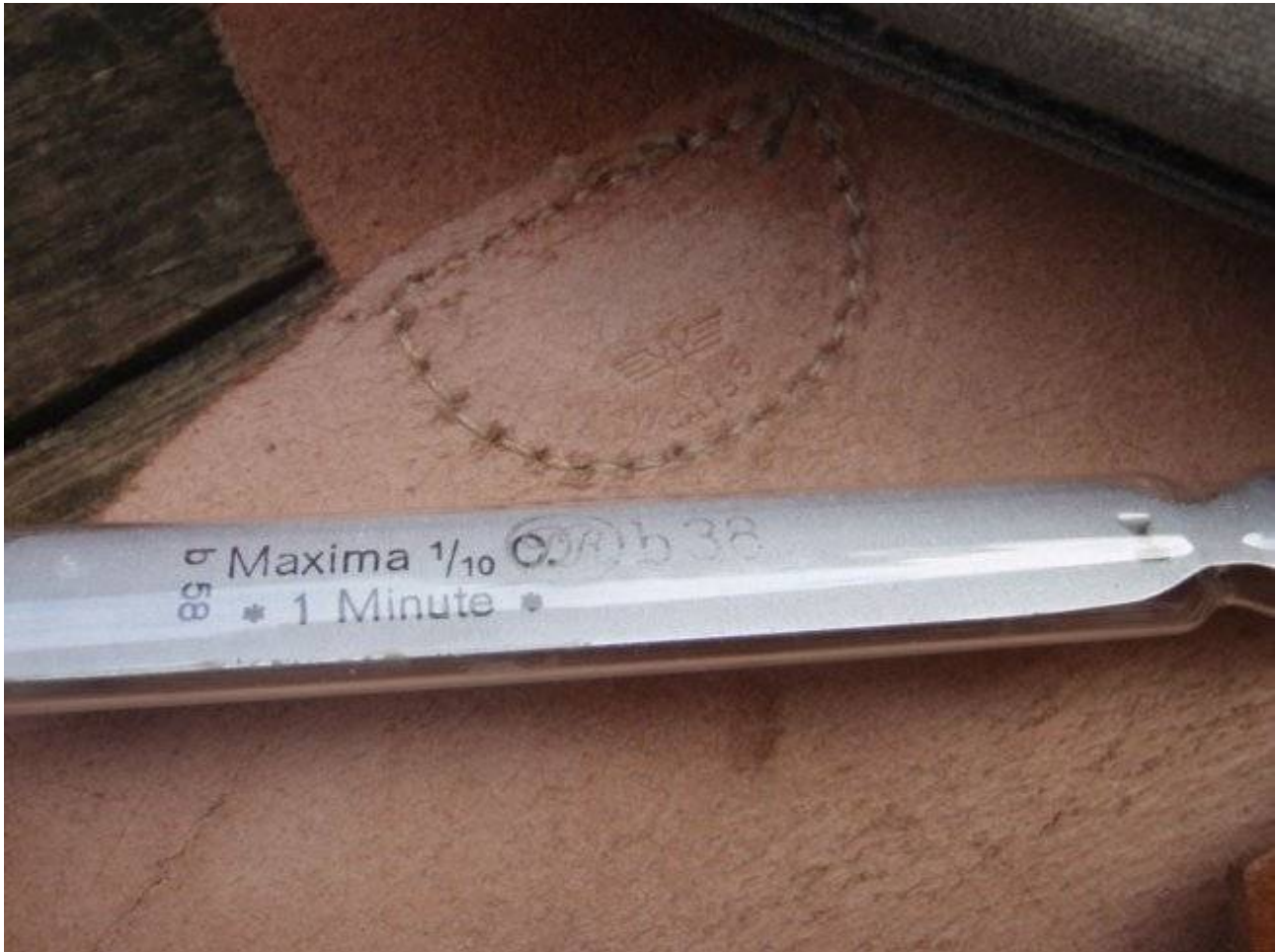
A very old magazinepouch made of leather – or was it for tools?. Maker: Max Stelzer, Berlin 1944. Eagle WaA524. Probably German Wehrmacht WW2. This find was made in an old store in an old wood chest. Script in old German type.

Below shown exactly the same pouch for a H&K G3 or perhaps a FN FAL type G1 from around 1962, and the markings are: Max Stelzer, 68, Berlin, P Pr Bln (Polizei Präsident Berlin)



It's also tempting to put an extra bird on genuine parts for example on a K98k sling. That will boost the price. Be distrustful of ink WaA-markings. They are easily faked. The same can be said about WaA-markings in soft leather.

Below a pouch for medical instruments. The instruments are genuine, the pouch is possibly genuine, but the WaA-marking is made a long time after the war:



• \_\_\_\_\_ •

If practicable, names and addresses are taken from the outstanding German codebook: "Liste der Fertigungskennzeichen". Names of towns are given with their WWII time period German names. That means that some of the names will not be found on modern post war maps. For example: Brunn = Brno in Czeckia and Lüttich = Liege in Belgium.

In connection with non German places two letters are mentioned. These letters are the country codes according to the Internet standard:

AT	Austria
BE	Belgium
CZ	Czech Rep.
DK	Denmark
ES	Spain
FR	France
HU	Hungary
IT	Italy
LV	Latvia

NL	Netherlands
NO	Norway
PL	Poland
SK	Slovakia

German places – in die Bundesrepublik to day – are indicated with an abbreviation for one of the “Bundesländer”:

B	Berlin
Bb	Brandenburg
BW	Baden-Württemberg
By	Bayern
Hb	Bremen
He	Hessen
Hh	Hamburg
MV	Mecklenburg-Vorpommern
Ni	Niedersachsen
NW	Nordrhein-Westfalen
RP	Rheinland-Pfalz
SA	Sachsen-Anhalt
SH	Schleswig-Holstein
Sl	Saarland
Sn	Sachsen
Th	Thüringen

#### Abbreviations of objects

art.	artillery
bay.	bayonet
Ber.	Beretta
Brng.	Browning
cln. kit	cleaning kit
el. equipm.	electrical equipment
flrgn.	flare gun
gren.	grenade
hol.	holster
mag.	magazine
mag. po.	magazine pouch
meas. instr.	measuring instrument
mu. co.	muzzle cover
pist.	pistol
rec.	receiver
rew.	reworked
Wal.	Walther

Special credits to: Peter Rasmussen, Denmark, David Franchi, California, Joe R. Steen, Texas, Michael Heidler, Germany, András Hatala, Jirí Lukes, Czech Republic + Brian Conkle, California for the Introduction

Claus Espeholt,  
[claus@espeholt.dk](mailto:claus@espeholt.dk)

WaA	Code	Object	Factory	Place	Name	Period
1	i	K98k parts for Gustloff	Elite Diamantwerke	Chemnitz (Sn)		
1	L	K98k parts for Gustloff	Astra Werke	Chemnitz (Sn)		
1		K98k	Berlin-Suhler Waffenwerke	Suhl (Th)		1937 – 39
1	337	K98k	Berlin-Suhler Waffenwerke	Suhl (Th)		1939 – 40
1	337	K98k	Gustloff-Werke	Weimar (Th)		1940
1	bcd	K98k	Gustloff-Werke	Weimar (Th)		1941 – 45
1	myx	art. fuse	Rheinmetall-Borsig	Sömmerda (Th)		1943
1	rea	MG42 receiver for Gustloff				1944 – 45
1	Z	MP44 bolt				1945
1		MP44 receiver				1945
2		safety belt	-----cherei			1936
2		control system for V2 rocket				
2	fzs	MG34 leather pouch	Heinrich Krieghoff	Suhl (Th)		
3	fzs	FG42	Heinrich Krieghoff	Suhl (Th)		
4	k	K98k parts for Gustloff	Luck und Wagner	Suhl (Th)	Kirschke	
4	dfb	2 cm magazine	Gustloff-Werke	Suhl (Th)	Kirschke	
4	dfb	MG34 tool	Gustloff-Werke	Suhl (Th)	Kirschke	
4		P08	D. W. M	Berlin	Kirschke	1920 – 21
4			Otto Sindel	Berlin	Kirschke	1934

4	S – logo	MG13 + MG belt	Simson	Suhl (Th)	Kirschke	1934 – 36
4	BSW	tools	Berlin-Suhler Waffenwerke	Suhl (Th)	Kirschke	
4	BSW	MG34, MG belt	Berlin-Suhler Waffenwerke	Suhl (Th)	Kirschke	1936 – 39
4	BSW	K98k, Mu.co.	Berlin-Suhler Waffenwerke	Suhl (Th)	Kirschke	1937 – 39
4	BSW	MG13 mag.	Berlin-Suhler Waffenwerke	Suhl (Th)	Kirschke	1938 – 39
4	337	K98k	Berlin-Suhler Waffenwerke	Suhl (Th)	Kirschke	1939
4	G	MG34	Berlin-Suhler Waffenwerke	Suhl (Th)	Kirschke	1939
4	G	MG belt	Gustloff-Werke	Suhl (Th)	Kirschke	1939
4	936	MG34	Gustloff-Werke	Suhl (Th)	Kirschke	1939 – 40
4	936	tool	Gustloff-Werke	Suhl (Th)	Kirschke	
4	936	MG belt	Gustloff-Werke	Suhl (Th)	Kirschke	1940
4	dfb	MG belt	Gustloff-Werke	Suhl (Th)	Kirschke	1940
4	dfb	MG34	Gustloff-Werke	Suhl (Th)	Kirschke	1940 – 43
4	dfb	MG34 bi-pod	Gustloff-Werke	Suhl (Th)	Kirschke	1941
4	dfb	MP44 bolt, MG42	Gustloff-Werke	Suhl (Th)	Kirschke	1943 – 44
4	dfb	MG42 bi-pod	Gustloff-Werke	Suhl (Th)	Kirschke	1944
4	svq	MP44 bolt, MG42	Gustloff-Werke	Suhl (Th)	Kirschke	1945
5		2 cm Flak 38 part				
5	omc	98 bay.	Maschinenhaus der Büchsenmacher	Ferlach (AT)		1939
6	S	Karab. 98b	Simson	Suhl (Th)		
6		cal. .22 conversion kit, magazine	Erma	Erfurt (Th)		
6		P08	Simson	Suhl (Th)		1925
6	S – logo	MG13 incl. mag	Simson	Suhl (Th)		1933 – 34

6	logo	MG15 mag.	Simson	Suhl (Th)		1934 – 35
6?	swallow logo	MG belt drum	Markes & Co.	Lüdenscheid (NW)	very possible a digit after "6"	1939
7		MG34 buttstock bakelite	metal marked "bzh"			1941
8		PP hol.	G.J.Ensink & Co.	Ohrdruf (Th)		1934
8		7,5 cm ammo container	K&H NKF			1934
8		pliers	Granit			1934
8		shovel	John AG			1934
8		tool	Granit			1934
8		small pist. hol.	Carl Weiss	Braunschweig (Ni)		1940
10		tool	NM			
11	A, logo B, 5A	MG34	Rheinmetall-Maget	Tegel (B)		1939 – 40
11	cra	MG34	Rheinmetall-Maget	Tegel (B)		1940 – 43
11	cra, swd	MG42	Maget	Tegel (B)		1942 – 45
12	ksm	art. fuse	Junghans	Braunau (CZ)		1942 – 43
12	oyo	art. fuse	Messap	Halbstadt (CZ)		1944
13	fng	rifle grenade launcher	Anker-Werke	Bielefeld (NW)		
13	avk	K98k barrelcontainer	Ruhrstahl	Bielefeld (NW)		
13		MG belt				
13		MG34 bolt part				
14	kar	MG tool	Fahrion	Stuttgart (BW)		
14	hoz	MG winter trigger	Bernhard Zade	Berlin		
14	fxp	leather for battery case	Hans Kollmorgen	Berlin		
14	jvb	scope can	Wessel & Müller	Luckenwalde (Bb)		

14	hck	leather pouch	Georg Lerch	Berlin		
14	dmy	rifle grenade launcher	Fritz Werner	Mariefelde (B)		
14		G43 pouch	Otto Koberstein	Landsberg a/W – near (B) (PL)		1944
14	kdr	MG42 tool	Georg Stenzel	Berlin		
14	G.G. &Co.	MG34 spring				1940
14		horse saddle	A. Wunderlich	Berlin		1940
14	dde	flr gn. hol.	Robert Larsen	Berlin		1940 – 41
14	cny	P38 hol.	C. Pose	Berlin		1940 – 41
14	emj	P08 hol.	Adalbert Fischer	Berlin		1940 – 42
14	fuq	flr gn. hol.	Curt Vogel, Lederwarenfabrik	Cottbus (Bb)		1940 – 43
14	avb	MG34 cleaning fluid can	Prestag	Berlin		1941
14	dpq	pioneer tool	Bruno Mädler	Berlin		1941
14	jsd	Brng. HP hol.	G. Reinhardt	Berlin		1941 – 42
14	kgw	MG34 spring container	G. Goliash & Co.	Berlin		1941
14	jme		Armeemarinehaus	Charlottenburg (B)		1941 – 42
14	cmr	RG34 cln. kit	Hawig	Berlin		1941 – 45
14	emj	Brng. HP hol.	Adalbert Fischer	Berlin		1942
14	fuq	sapper pouch	Curt Vogel, Lederwarenfabrik	Cottbus (Bb)		1941
14	fuq	P08 hol.	Curt Vogel, Lederwarenfabrik	Cottbus (Bb)		1941 – 42
14	fuq	pioneer saw sheathe	Curt Vogel, Lederwarenfabrik	Cottbus (Bb)		1942
14		P08 hol., leather goods	Otto Koberstein	Landsberg a/W – near (B) (PL)		1937, 42
14	cdc	leather case	Kern, Kläger & Cie	Berlin		1942

14	hft	P38 hol.	Becker & Co.	Berlin		1941 – 43
14	hlv	P38 hol.	Maury & Co.	Offenbach /Main (He)		1942
14		horse leather equipment	Otto Koberstein	Landsberg a/W – near (B) (PL)		1942 – 44
14	cvb	horse leather equipment	Otto Sindel	Berlin		1942 – 43
14	jsd	horse saddle	G. Reinhardt	Berlin		1943
14	ksd	binocular case	Walter Winkler	Spandau (B)		1941, 43
14	cny	G43 pouch	C. Pose	Berlin		1943-45
14	cju	metal box	Hermann Grau	Berlin		1943
14	hck	leather goods	Georg Lerch	Berlin		1942, 44
14		leather case for binocular				1944
14	jba	horse saddle	A. Wunderlich	Berlin		1944
14	crv	Flak 8,8 cm part	Fritz Werner	Berlin		1944
14	cgz	wooden box for cannon ammo	Eduard Hoppe Möbelfabrik	Luckenwalde (Bb)		1944
14	qkv	horse saddle				1944
14		tank head set metal				
15		Flak 10,5 grenade				
16		flrgn. hol.				
16		P08 hol.	Kimnach & Brunn	Kaiserslautern (RP)		1939
16		P27(t) hol.	R. S.			1942
17		MG34 part, early				
17	jrr	art. fuse	Junghans Uhrenfabrik	Renchen (BW)		1943
18		P08 hol.	Adalbert Fischer	Berlin		
18	a	K98k parts for Gustloff	Nähmatag	Dresden (Sn)		

18	n	K98k parts for Gustloff	Elsterwerdaer Fahrradfabrik	Elsterwerda (Bb)		
18		MG34 parts				
18	gpy	7,5 cm cannon part	Clemens Müller AG	Dresden (Sn)		
18		P08 hol.	G. Reinhardt	Berlin		1922
18		P08 hol.	C. Pose	Berlin		1926
18			A. Wunderlich	Berlin		1927
18			G. Reinhardt	Berlin		1937
18		P38 locking block for Spreewerke				1942
19	WwSu		Westfälische Waffenfabrik			
19	hly	cln. kit	Krafft & Schüll	Düren (NW)		
20	cnx	rifle grenade launcher	G. Appel	Spandau (B)		
20	cnx	MG34 flashhider	G. Appel	Spandau (B)		
20	cnx	tripod	G. Appel	Spandau (B)		
20	64	RG PzB 38/39	G. Appel	Spandau (B)		
20	64	MG loader	G. Appel	Spandau (B)		
20		RG34 cln. kit	G. Appel	Spandau (B)		1934 – 38
20	64	MG loader	G. Appel	Spandau (B)		1939
20	64	RG34 cln. kit	G. Appel	Spandau (B)		1938 – 41
20	cnx	range finder	G. Appel	Spandau (B)		
20	cnx	MG loader	G. Appel	Spandau (B)		1940
20	cnx	RG34 cln. kit	G. Appel	Spandau (B)		1941 – 45
20	arr	RG34 cln. kit	Braunschweigische Blechwarenfabrik	Braunschweig (Ni)		1942 – 44
21	awt	MP44 triggergroup	Württembergische Metallwarenfabrik	Geislingen – Steige (BW)		1943 – 45
21	P152	3,7 cm ammo	Württembergische Metallwarenfabrik	Geislingen – Steige (BW)		1936 – 39
21	qls	8,8 ammo				1945

22	S/173	98 bay.	A. Coppel	Solingen (NW)		1934
22	logo	MG drum mag.	HASAG	Leipzig (Sn)		1936
22	P181	2 cm ammo	HASAG	Leipzig (Sn)		1936 – 39
22	P216	10,5 cm ammo	Langbein-Pfannhauser	Leipzig (Sn)		1937
22	P181	10,5 cm ammo	HASAG	Leipzig (Sn)		1939
23	jwa	P38 hol.	Moritz Stecher	Freiberg (Sn)		1944
23	P319	10,5 cm ammo	Maschinen für Massenverpackung	Lübeck-Schlutup (SH)		1936
23	?pa	metal box				1942
23	lhl	horse saddle bag	Friedrich Schäfer	Ulm (BW)		1942
23	dyo	horse leather equipment	J. M. Eckart	Ulm (BW)		1942
23	bml	P08 hol.	Hans Römer	Neu-Ulm (By)		1942
23	bml	horse leather equipment	Hans Römer	Neu-Ulm (By)		1943 – 44
23	bml	P38 hol.	Hans Römer	Neu-Ulm (By)		1942 – 44
24		binocular leather				
25		M1922 sabre				
25		cup	E.R.F.R.I			
25		binoculars	perhaps not German made			
25	?pa	magazine box for MG26(t)				1942
25	ddl	98 bay.	Josua Corts	Remscheid (NW)		1943 – 44
26	crv	K98k barrel	Fritz Werner	Berlin		
26	cxm	K98k barrel	Gustav Genschow	Berlin		
26	logo	extractor tool	Mauser-Werke	Borsigwalde (B)		
26	S/237	K98k	Berlin-Lübecker Maschinenfabriken	Lübeck (SH)		1936 – 38

26		.22 KKW rifle	Gustav Genschow	Berlin		1937
26	S/237	flare gun	Berlin-Lübecker Maschinenfabriken	Lübeck (SH)		1938
26	237	K98k	Berlin-Lübecker Maschinenfabriken	Lübeck (SH)		1938
26	S/243	K98k	Mauser Werke	Borsigwalde (B)		1938
26	S/243	MG34	Mauser Werke	Borsigwalde (B)		1938 - 40
26	243	K98k	Mauser Werke	Borsigwalde (B)		1938 - 40
26		K98k parts for BSW				1939
26	ar	MG34	Mauser Werke	Borsigwalde (B)		1941 - 42
26	ar	K98k	Mauser Werke	Borsigwalde (B)		1941 - 44
26	ar	MG42	Mauser Werke	Borsigwalde (B)		1943 - 44
26	ar	MP44 piston	Mauser Werke	Borsigwalde (B)		1944
26	dd	MG42	Mauser Werke	Borsigwalde (B)		1945
27	dlv		Deut. Edelstahlwerke	Remscheid (NW)	J.G. Bayer	1941
27		telephone parts	Siemens & Halske			1942
28		ammo container	John AG			1936
29		P08 hol.	R. Ehrhardt	Pössneck (Th)		1937 - 40
29		gas-mask container	John AG			1938
29		tape measure				1937 - 38
29		rim with ring	Hering	Ronneburg (Th)		1939
30		tape measure				1934 - 35
31	duz	ball bearing	Vereinigte Kugellagerfabriken	Schweinfurt (By)		
33		karb. parts				
33		Luger P08	Simson			1926

34	bve	8,8 cm grenade	Carl Weinberger	München (By)		
34	hvg	MG34 – 42 buttstock	De Limon Fluhme	Düsseldorf (NW)		1944
34		map bag				1934
34		PPK hol.				1943
35		Impact fuse	Auto Union	Chemnitz (Sn)		1940
36	ada	ammo box	Stephan Nahrath	Ahlen (NW)		1943
37		boots pull up				
37		stirrup	Linden & Funke			
37	HAENEL, 122	MP41 mag. and loader	Haenel	Suhl (Th)		
37		zielfeuergerät 38	Haenel	Suhl (Th)		1938 – 39
37	122, fxo	MP38u.40 mag. and loader	Haenel	Suhl (Th)		1938 – 42
37	147	K98k	Sauer und Sohn	Suhl (Th)		1938 – 40
37		98 bay.	Gebr. Heller	Marienthal (Th)		1939 – 40
37	122	MP38	Haenel	Suhl (Th)		1940
37	122, fxo	MP40	Haenel	Suhl (Th)		1940 – 43
37	C.G.Haenel	MP41	Haenel	Suhl (Th)		1941, 44
37	fxo	P08 mag.	Haenel	Suhl (Th)		1940 – 41
37		Sauer 38H pist.	Sauer und Sohn	Suhl (Th)		1940 – 45
37	fxo	MP40 loader	Haenel	Suhl (Th)		1941
37	ce	K98k	Sauer und Sohn	Suhl (Th)		1941 – 44
37	fxo	MP44 mag.	Haenel	Suhl (Th)		1942 – 45
37	fxo	MP44	Haenel	Suhl (Th)		1943 – 45
37	ce	MP44	Sauer und Sohn	Suhl (Th)		1943 – 45
38		radio tube	Alfred Luscher	Dresden (Sn)		
38		pocket lamp	Daimon			
38		lantern	Eschebach	Radeberg (Sn)		1939

38		electronics	Mende Radio	Dresden (Sn)		1939, 41
38		field phone	Mende Radio	Dresden (Sn)		1940
38		hand siren	Jurk Sirenfabrik	Radeberg (Sn)		1940, 41
38		radio tube	Sachsenwerk	Radeberg (Sn)		
39		cable out-roller				1934
39		phone cable plate	HMB			1934
39		tool (tank)				
39		field phone				1937
39	A	MG34	Rheinmetall-Magget	Tegel (Be)		1937 – 38
39		sapper ignitor handle				1938
39	cbj	2 cm fuse	Wagner	Pforzheim (BW)		1943 – 44
40	PR	grenade parts	Rh. S.			
41		horse saddle	L & F			
41	jhg	Mauser HSc hol.	G. Genschow (=Geco)	Hachenburg (RP)		
41	gut		W. Schürmann	Bielefeld (NW)		
41		belt				
41		Brng. HP hol.				
41		ammo box				1938
41	jsq	ammo box	Alsfelder Möbel-fabriken	Alsfeld (He)	also marked "axp"	1943
41	bmv	art. fuse	Rheinmetall-Borsig	Sömmerda (Th)		1942
41	jhg	Ber. hol.	G. Genschow (=Geco)	Hachenburg (RP)		1942, 44
41	jhg	P38 hol.	G. Genschow (=Geco)	Hachenburg (RP)		1942, 44
41	jvf	horse saddle	Wilhelm Brand	Heidelberg (BW)		1944
42		P08 tool, K98 tool				
42		MG42 tool	Hommel Werke			
42		armorer's gauge				

42		cartridge gauge	Ultra	Aschaffenburg (By)		
42		measuring clock	Carl Mahr	Esslingen (BW)		
42			Gebr. Klinge	Dresden (Sn)		1936
42			C. Heinichen	Dresden (Sn)		1937
42		measuring instrument	Carl Zeiss	Jena (Th)		1939
42		cartridge gauge	Piltz			1939
42		cartridge gauge	Polte	Magdeburg (SA)		1939 – 41
42	cr	cartridge gauge	Zander & Opitz	Berlin		1939 – 40
42	gmm	cartridge gauge	Eckhardt & Lohkamp	Berlin		1944
43	S	Karab. 98b	Simson	Suhl (Th)		
43	S	MG34	Simson	Suhl (Th)		1932
43	P131	8,8 cm ammo	D. W. M	Borsigwalde (Be)		1938
43	asb	2 cm fuse, 7,5 cm ammo	D. W. M.	Borsigwalde (B)		1944
44		el. generator	Auto Union			
44		field kitchen M/1928	Haas & Sohn	Neuhoffnungshütte bei Sinn (He)		1928
44	cos	MP40 rec.	Merz Werke	Frankfurt (He)	certain see A44	1943
46	S	Karab. 98b	Simson	Suhl (Th)		
46		M1922 sabre				
46	SU175	MG belt	Simson	Suhl (Th)		1931
46	S	MG13	Simson	Suhl (Th)		1932 – 33
46	cyq	P38	Spreewerke	Spandau (B)		1942 – 43
47		pouch for a watch	Eugen Huber	München (By)		1934
47		horse saddle	AS			1935
47		horse saddle	SLA			1935, 37
47		chisel				1938
47	cgu	P39(t) hol.	Stolla's Söhne	Wien (AT)		1940

47		leather goods	Paul Klopfer	Wien (AT)		1937 – 38
47		pouch for ignition device	Schaffler & Co.	Wien (AT)		1940
47	erg		A. Döppert	Kitzingen (By)		1940
47	cey	P08 hol.	Karl Budischowsky	Wien (AT)		1940 – 41
47	cey	MG tool bag	Karl Budischowsky	Wien (AT)		1941
47	cgn	Brng. HP hol.	Jos. Poeschl's Söhne	Rohrbach (By)		1941
47	cga	P39(t) hol.	Landeslieferungs-genossenschaft für Wien	Wien (AT)		1941
47	cft	MG tool bag	Paul Klopfer	Wien (AT)		1941
47	bpr	MG42	Johannes Grossfuss	Döbeln (Sn)		1942
47	cra	MG42	Maget	Tegel (B)		1942
49		P08 .22 cal. Conversion kit	Erma	Erfurt (Th)		
49	S/147K	K98k	Sauer und Sohn	Suhl (Th)		1934
49	S/243G	K98k	Mauser Werke	Borsigwalde (B)		1935
49	S237	K98k	Berlin-Lübecker Maschinenfabriken	Lübeck (SH)		1936
50	edg	wurfgranate 326	J. A. Henckels Zwillingswerk	Solingen (NW)		1941
51		cal. .22 conversion kit, receiver	Haenel	Suhl (Th)		
51	P341	2 cm case	August Enders	Oberrahmede (NW)		1935
52		climbing tool	J. Schwahlen	Solingen (NW)		
52		el.cable plug				1937
52		pliers, tool	W. Kücke & Co	Wuppertal-Eilberfeld (NW)		1937
53			org. stamp exists			
53	coc	2 cm fuse	MAN	Augsburg (By)		1944

54	hvg	MG42 stock	De Limon Fluhme	Düsseldorf (NW)		
54		weights	D * R			
54		wooden case for Junghans clock				1939
54	BK	2 cm case				1940
54	bpo	box for handgre- nades	Johann Jäckle	Schwennin- gen (BW)		1941
54	wg	2 cm case	Hugo Schneider	Altenburg (Th)		1941
54	dny	leather goods	Karl Bollmann	Tuttlingen (BW)		1941
56	jkg	4 cm case, clip, Flak 28 clip	Ung. Eisen- Stahl- und Mas- chinenfabriken	BudaPest (HU)		1941
56	jhv	P37ü pist., G98/40	Metallwaren- Waffen und Ma- schinenfabrik	BudaPest (HU)		1941 – 42
57	Ky	RG34 cln. kit	Kyffhäuserhütte (Paul Reuss)	Artern (Th)		1940 – 41
57	ayw	RG34 cln. kit	Kyffhäuserhütte (Paul Reuss)	Artern (Th)		1941
57	arr	RG34 cln. kit	Braun- schweigische Blechwarenfab- rik	Braun- schweig (Ni)		1941 – 44
58		metal plate				
58		K98 cln. rod				
58	P425	10,5 cm case	Collis Metallwerke	Westhausen Aalen (BW)		1937
58	jkg	clip for 4 cm case	Ung. Staatl. Ei- senfabriken	BudaPest (HU)		1941
58		8,8 cm case				1941
58	jhv	P37 Hun- garian pist.	Metallwaren- Waffen und Ma- schinenfabrik	BudaPest (HU)		1941 – 42
59	P419	2 cm case	Christ Co.	Grünberg, Si- lesia (PL)		1939
60	P131	7,5 cm cart.	D. W. M.	Borsigwalde (B)		1935
60	89	folding shovel	Lange	Berlin		1940
61		M1922 sa- bre	Weyersberg & Kirschbaum	Solingen (NW)		

61	S/237	K98k	Berlin-Lübecker Maschinenfabri- ken	Lübeck (SH)		1937
61		RG34 cln. kit	G. Appel	Spandau (B)		1938
62		M1922 sa- bre				
62	S/155	98 bay.	F. u. K. Hörster	Solingen (NW)		1934
62	S/172	98 bay.	Eickhorn	Solingen (NW)		1934
62	S/178	98 bay.	Heller	Marienthal (Th)		1935
62	S/239	98 bay.	Rich. Herder	Solingen (NW)		1935
62		S-mine	Hagenuk			1938
62		tape meas- ure				1940
62	P263	3,7 cm ammo	Vereinigte Herd & Ofenfabrik	Hamm/Westf. (RP)		1940
63	"K"	ZB26/30 mag.				
63		tools	Schmidt			
63	gqm	tape meas- ure	Loch & Harten- berger	Idar-Ober- stein (RP)		
63	S/42	MG13 mag.	Mauser Werke	Oberndorf (BW)		1935
63	S/42G, S/42, 42	K98k	Mauser Werke	Oberndorf (BW)		1935 – 39
63	S/42	P08	Mauser Werke	Oberndorf (BW)		1935 – 39
63		K98k parts for Erma				1936
63		K98k parts for Sauer				1937
63	42	P08	Mauser Werke	Oberndorf (BW)		1939
63	945	G33/40	Waffenw. Brünn	Brünn (CZ)		1940
63	945	ZB26/30 mag.	Waffenw. Brünn	Brünn (CZ)		
63		VZ24 rew. bay.	Waffenw. Brünn	Brünn (CZ)		1940
63	cpa	box for mags for MG26(t)	Ostertag-Werke	Aalen (BW)		1941
63	dot	G33/40	Waffenw. Brünn	Brünn (CZ)		1941 – 42

63	dot	K98k	Waffenw. Brünn	Brünn (CZ)		1941 – 45
63	dot	MG34	Waffenw. Brünn	Brünn (CZ)		1941 – 45
63	dot	VZ24 rew. Bay.	Waffenw. Brünn	Brünn (CZ)		1942 – 43
63	dou	K98k	Waffenw. Brünn	Bystrica (SK)		1942 – 44
63	swp	K98k	Waffenw. Brünn	Brünn (CZ)		1945
64	P223		Sächsische Metallwarenfabrik	Aue (Sn)		1939
64	ets	2 cm magazine	Ernst Hecker	Aue (Sn)		
64	ya	10,5 cm grenade	Sächsische Metallwarenfabrik	Aue (Sn)		1943
64	bdp	M24 handgrenade	Friedrich Maurer & Söhne	München (By)		1943
65	brb	metal ammo box	Richard Rinker	Menden (NW)		1937
65		carbide lamp				
65		cap for handgrenade				
65	336	adapter to artillery shell	Richard Rinker	Menden (NW)		1938, 40
65		coffee container	Wesco			1937
65	bzs	10,5 cm grenade	Witkowitz Bergbau- u. Eisenhütten Gewerkschaft	Witkowitz (CZ)		1944
66		P08	D. W. M.	Berlin		1929
66		P08	Mauser and Simson rew. P08			1930 – 33
66		P08	Heinrich Krieghoff	Suhl (Th)		1934 – 40
66	fzs	P08	Heinrich Krieghoff	Suhl (Th)		1940 – 42
66	hko	4 cm quick-loader	Matthias Oechler	Ansbach (By)		1941
66	edq	1,5 cm ammo	D. W. M.	Lübeck-Schlutup (SH)		1942
67	S	MG34	Simson	Suhl (Th)		1932

67		RG34 cln. kit	G. Appel	Spandau (B)		1938
67	64	MG loader	G. Appel	Spandau (B)		1939
67	gpo	quiver for MG42 barrel	Fröhlich & Wolter	Beierfeld (Sn)		1943
68	S/155	98 bay.	E. u. F. Hörster	Solingen (NW)		1934
68	S/242G	98 bay.	Solinger Axt u. Hauerfabrik	Solingen-Ohligs (NW)		1935
68		flrqn. hol.	Karl Budischowsky	Wien (AT)		1942
69		generator tool box				
69		telephone	N & K			1936 – 37
69		enigma				
70		truck	Magius	Ulm (BW)		1941
71	asf	2,5 cm case	Ehrich & Graetz	Berlin		1942
71	dov	1,5 cm ammo, art. fuse	Waffenwerke Brünn	Wsetin (SK)		1942 – 44
72		pioneer saw	E. Winterhoff & Co.	Remscheid (NW)		1940
72		G43 pouch	Otto Koberstein	Landsberg a/W – near (B) (PL)		1944 - 45
73		small glas tube				
73	S/178K	98 bay.	Gebr. Heller	Marienthal (Th)		1934
73	S/178G	98 bay.	Gebr. Heller	Marienthal (Th)		1935
73	P345	3,7 cm ammo	Silva Metallwerke	Genthin (SA)		1938 – 39
73	avu	2 cm case	Silva Metallwerke	Genthin (SA)		1943
73	avu	3,7 cm ammo	Silva Metallwerke	Genthin (SA)		1944
z74	P150	8,8 cm case	Julius Pintsch	Fürstewalde, Spree (Bb)	Looks like PaAz74	1937
75	P	7,5 cm ammo	Polte	Magdeburg (SA)		
75	P	3,7 cm ammo	Polte	Magdeburg (SA)		1930

75	P	10,5 cm ammo	Polte	Magdeburg (SA)		1933
76	oub		J. Jelinek	Gross-Meser- itsch (CZ)		
76		CZ38 pist.	Ceská Zbro- jovka akc. Spol. V praze	Strakonitz, Prag (CZ)		
76	dsh	K98k barrel	F. Janek Waf- fenfabrik	Prag (CZ)		
76		MG metal part				
76		P27(t) hol.	Ceská Zbro- jovka	Strakonitz, Prag (CZ)		1939
76		P27(t) hol.	Böhmische Waf- fenfabrik	Strakonitz, Prag (CZ)		1939 – 42
76	946	MG belt	Böhmische Waf- fenfabrik	Strakonitz, Prag (CZ)		1940
76	fnh	P38 pist parts, P27(t) hol.	Böhmische Waf- fenfabrik	Strakonitz, Prag (CZ)		1941 – 45
76	fnh	CZ27 pist.	Böhmische Waf- fenfabrik	Strakonitz, Prag (CZ)		1943 – 45
77	lyo	Brng. HP hol. + P38 hol.	Kromolowski	Radom (PL)		1944
77	Erma	cal. .22 conversion kit, recei- ver, bolt, wooden box	Erma	Erfurt (Th)		1937 – 38
77		speed- loader for MG13 mag.	EE			
77		on Steyr produced small arms	F. B. Radom	Radom (PL)	In- spected in Po- land ?	
77	S/174G	98 bay.	WKC	Solingen (NW)		1935
77	S/175G	98 bay.	F. W. Höller	Solingen (NW)		1935
77		K98k parts for Erma				1937
77	S/27, 27		Erma und Geipel	Erfurt (Th)		1938

77	660	G29/40	Steyr-Daimler-Puch	Steyr (AT)		1939
77	bnz	K98k	Steyr-Daimler-Puch	Steyr (AT)	In-spected in Poland ?	1941 – 44
77	lyo	P38 hol.	Kromolowski	Radom (PL)		1943 – 44
77	ndk	P38 hol.	Arba Gmbh	Petrikau (PL)		1943 – 44
78		bakelite carbide lamp				
78		gas-mask				
78	S652	MG lafette	Metallindustrie Schönebeck	Schönebeck (Sn)		1940
79		MG34 parts				
79		gun carriage for Kürbelwagen				
80		K98k dust cover	Ernst Angermann	Schlettau (Sn)		1941
80	dou	Flak 8,8 case	Waffenwerke Brünn II	Bystrica (CZ)		1944
81		K98b				
81		cal. .22 conversion kit, magazine	Haenel	Suhl (Th)		Weimar
81	S/237	K98k	Berlin-Lübecker Maschinenfabriken	Lübeck (SH)		1937
82		M1922 sabre	Carl Eickhorn	Solingen (NW)		
82		M1890 sabre	A.Coppel	Solingen (NW)		
82	S/173K	98 bay.	A.Coppel	Solingen (NW)		1934
83	S/42	P08	Mauser Werke	Oberndorf (BW)		1938 – 39
83	awl	art. fuse	Sils van de Loo & Co.	Fröndenberg (NW)		1944
84		rew. LMG ammo box	Kongsberg Våpenfabrik	Kongsberg (NO)		
84		axe	H & W Stoll	Wuppertal (Cronenberg) (NW)		1934

84	P181	2 cm ammo	HASAG, Hugo Schneider	Leipzig (Sn)		1940
84		horse mane comb				1939
84		M1914 pist.	Kongsberg Våpenfabrik	Kongsberg (NO)		1941 – 45
84		M1894 (rew.) bay.	Kongsberg Våpenfabrik	Kongsberg (NO)		1942 – 45
84		M1894 rifle	Kongsberg Våpenfabrik	Kongsberg (NO)		1943 – 45
85		fork-spoon	FWBN			1939
86	bdr	pouch for telephone	R. Ehrhardt	Pössneck (Th)	see WaA 472	1941
86		clock & wooden stand	Kienzle Uhrenfabriken			1941
86	bdr	MP40 mag. pou.	R. Ehrhardt	Pössneck (Th)		1942
86 186 ?	bdr	Sauer38H hol., Astra 600 hol.	R. Ehrhardt	Pössneck (Th)		1942 – 44
86	bdr	P38 hol.	R. Ehrhardt	Pössneck (Th)		1941 – 44
86	edq	2 cm case	D. W. M.	Lübeck-Schlutup (SH)		1943
87	P370	3,7 cm ammo	Hugo Schneider	Berlin		1940
88	adb	sight for K98 gren. Launcher	Markneukirchner Metallbearbeitungs GmbH	Markneukirchen (Sn)		
88	atf	steel box	J. A. John AG	Erfurt (Th)		
88	S/177K	98 bay.	Pack u.Söhne	Solingen (NW)		1934
88		MG34 part, early				
88	cyq	MG42 barrel	Spreewerke	Berlin		
88	cyq	P38	Spreewerke	Berlin		1942 – 45
89		7,5 cm hollow round				
89	kxs	panzerschreck	Schicker & Co.	Fürth-Vach (By)		
89		electronics	Telefunken GW	Erfurt (Th)		
89		radio tube	Telefunken RöW	Erfurt (Th)		

89		flrgrn. hol.	Curt Vogel, Lederwarenwerk	Cottbus (Bb)		1940
91		tinderbox				1943
92		binocular case	Hensoldt	Wetzlar (He)		
94		RG34 cln. kit	Hawig	Berlin		1935 – 39
94			Otto Sindel	Berlin		
94		flrgrn. hol.	Frost und Jahnel			
94		pouch	Richter & Co.	Charlottenburg (B)		
94		horse saddle	Franz Cobau	Berlin		1933, 38
94		pouch	Gebr. Wichmann	Berlin		1933 ?
94		flrgrn. hol.	L. Seschke			1935
94		P08 hol.	Schambach & co.	Berlin		1936
94		gas mask part	S & S			1936
94		pouch, first aid	Paul Klopfer	Berlin		1937
94		gas-mask field gear	Robert Larsen	Berlin		1937
94		horse saddle	Gustav Reinhardt	Berlin		1937 – 38
94		P08 hol.	Curt Vogel, Lederwarenwerk	Cottbus (Bb)		1938
95	S/155K	98 bay.	E. u. F. Hörster	Solingen (NW)		
95	S/184	98 bay.	Josua Corts	Solingen (NW)		1936
96		armorers gauge	Hommel Werke	Mannheim (NW)		
97	azg	2 cm fuse	Siemens-Schuckert	Berlin		1944
98		Flak 8,8 part				
98	cpq	sight for gren. launcher	Rheinmetall-Borsig	Guben (Bb)		
98	bmd	horse leather equipment	Max Müller	Nürnberg (By)		1940, 44
98	gyo	P08 hol.	Hans Dinkelmeier	Nürnberg (By)		1941

98	cpg	MG belt	Doll & Co.	Nürnberg (By)		1941
98	gyo	P38 hol.	Hans Dinkelmeier	Nürnberg (By)		1942
98	gmm	leather goods	Eckardt & Lohkamp	Berlin		1942
98	bzc	pouch	M. Hiessinger	Nürnberg (By)		1943
98	gqm	K98k butt-plate for Mauser O	Loch & Hartenberger	Idar-Oberstein (RP)		1944
99	qyn	flare gun M42				
99	dpf	MP40 spare parts box	B. & H. Reinert	Spiegelau (By)		1943
100	bmo	Wal. PPK hol.	Hans Deuter	Augsburg (By)		1945
100	cny	holsters	C. Pose	Berlin		
100		art. fuse				1935
100		leather pouch	Paul Bieneck	Berlin		1939
100		P38 hol.	C. Pose	Berlin		1939 – 40
100	krm	for foreign contractors	C. Pose	Berlin		
100		horse saddle	Otto Sindel	Berlin		1939
100			G. Genschow	Berlin		1939
100			Curt Vogel, Lederwarenwerk	Cottbus (Bb)		1939
100		P08 hol. for cavalry	Kern, Kläger & Cie	Berlin		1940
100		RG34 cln. kit	Hawig	Berlin		1940
101		P08 hol.	Auwaerter und Bubeck	Stuttgart (BW)		1934 – 39
101		leather pouch	Auwaerter und Bubeck	Stuttgart (BW)		1934, 39
101		P08 hol.	Hans Römer	Neu-Ulm (By)	see 107	1936
101		flrqn. hol.	Ernst Kurz	Stuttgart (BW)		1937
101		P08 hol.	E. K. St. (Ernst Kurz, Stuttgart?)			1938 - 39
101		K98 sling	Bacher?			1938
101		K98 sling	L & F			

101		field kitchen, coffee-container, soup spoon	H. R. E.			1937 – 38
101		frying pan	Verband Deutscher Elektro- techniker			1939
101		food container	H. R. E. or H .E. R.			1938, 40
101	cdg	P08 hol.	Auwaerter und Bubeck	Stuttgart (BW)		1939, 41
101	cdg		Auwaerter und Bubeck	Stuttgart (BW)		1940 – 41
101		P38 hol.	E. K. St. (Ernst Kurz, Stuttgart?), (Ehr- hardt & Kirsten, Leipzig?)			1941
101	evg	pouch for telephone	Max Oswald	Karlsruhe (BW)		1941
101	gfg	P08 hol.	Carl Hepting	Stuttgart (BW)		1941
101	gfg	P38 hol.	Carl Hepting	Stuttgart (BW)		1941, 43
101	cdg	horse leather equipment	Auwaerter und Bubeck	Stuttgart (BW)		1942
101	bzk	metal ammo box	Wagner & Keller	Ludwigsburg (BW)		1942, 44
101	nka	Star B hol., Brng.HP hol.	J. J. Schlayer	Reutlingen (BW)		1943
101	gna	horse leather equipment	Gustav Buch- müller	Stuttgart (BW)		1943
101	ett	horse leather equipment	Landes-Liefe- rung-Genossen- schaft	Stuttgart (BW)		1943
102		weapon measuring instrument				
102			Carl Ackva	Bad Kreuz- nach (RP)		1934
102		pouch	Wilhelm Brand	Heidelberg (BW)		1934

102		aluminium part	WJ			1935
102		2 cm ammo	HASAG	Skarzysko (PL)		1941
103	bmo		Hans Deuter	Augsburg (By)	Etzel	
103		climbing iron		Stubai, Tirol (AT)	Etzel	
103		8,8 cm cannon case	C/30		Etzel	
103		Y-straps			Etzel	
103		lamp	Daimon-Werke	Danzig (PL)	Etzel	
103		Brng. HP pistol	F. N.	Lüttich (BE)	Etzel	1941
103		FN 10/22 pistol	F. N.	Lüttich (BE)	Etzel	1941
103			F. N.	Lüttich (BE)	Etzel	May 41 – Dec 41
104		cartridge box				
104		gas jacket	Auer	Brandenburg		
104		gas-mask	Auer	Brandenburg		1940 - 41
104	CA	1,5 cm ammo				1940
104	bwz	jerry can, gas-mask filter	Auer	Oranienburg (Bb)		1941
104	byd	gas protection equipm.	Drägerwerk	Lübeck (SH)		1943
105		tape measure				1934, 38
105		P08 hol.	Carl Heinichen	Dresden (Sn)		1934
106	joa	P38 hol.	Carl Heinichen	Dresden (Sn)		1941
107			Auwaerter und Bubeck	Stuttgart (BW)		1934
107	P	3,7 cm ammo	Polte	Magdeburg (SA)		1935
107			Hans Römer	Neu-Ulm (By)	see 101	1936
107	P	8,8, 14,9 cm ammo	Polte	Magdeburg (SA)		1935 – 36
107	P	case for 18 cm howitzer	Polte	Magdeburg (SA)		1936

107	P	2 cm Flak case	Polte	Magdeburg (SA)		1936
107	dfb	2 cm Flak 38 firing pin	Wilhelm-Gustloff-Werke	Suhl (Th)		
107		P08 hol.	K. W. K.			1939
107		electronic equipm.	Habafa	Hamburg		1944
107		battery	Otto Gross – Hamburger Batterie-Fabr.	Hamburg		1944
108			Carl Heinichen	Dresden (Sn)		1934
108	S/42	K98k	Mauser Werke	Oberndorf (BW)		1935
109	KH	RG34 cln. kit	Kyffhäuserhütte (Paul Reuss)	Artern (Th)		1935
109		kkw cln. kit	G. Appel	Berlin-Spandau (B)		1936
109	aux	panzerbüchsepat.	Polte	Magdeburg (SA)		1941 – 42
110	avq	field kitchen box	Senkingwerke AG	Hildesheim (Sn)		
110	dth	drag anchor	Vosswerke Sarstedt	Sarstedt (Ni)		
111		gas-mask				
111		pouch for signal ammo	Sachs & Deisenberg	Hamburg		1935
112		horse leather equipment				
112			G. Genschow	Berlin		1936
112		binocular leather	E. Leitz	Wetzlar (He)		1936 – 37
112		binocular leather	Hensoldt	Wetzlar (He)		1937
114		caliper				
114		tool	Irioinal ? Helio			
114	S/147	K98k	Sauer und Sohn	Suhl (Th)		1934 - 35
114	S/237	K98k	Berlin-Lübecker Maschinenfabriken	Lübeck (SH)		1936
115	„S“	MG13 mag.				1935
116	„S“	MG13 mag.				1935
116	S/147	K98k rec. + r. sight for Sauer	Carl Walther	Zella-Mehlis (Th)		1934 – 36

116	S/237	K98k	Berlin-Lübecker Maschinenfabri- ken	Lübeck (SH)		1936
117		electronics	Staru GmbH	Staufurt (SA)		
117		P08, .22 cal. conver- sion kit	Erma	Erfurt (Th)		
117	S/155G	98 bay.	E. u. F. Hörster	Solingen (NW)		1935
118		M1890 sabre	Carl Eickhorn	Solingen (NW)		
118		M1922 sabre	Carl Eickhorn	Solingen (NW)		
118	S/173	98 bay.	Coppel	Solingen (NW)		1935
118	S/177	98 bay.	Pack u. Söhne	Solingen (NW)		1935
120		10,5 cm case				1945
121			Karl Barth	Waldbröhl (NW)		1939
121	fmx	art. fuse	Krüger & Co.	Berlin		1943
123		incendiary bomb				
123		axe				1936
123		case for stick gre- nades, box for MG bands	WF Co.			1938 – 40
124		funnel	F. F. A.			1935
124		carbide lamp	F. F. A. Schulze	Berlin		1934 - 36
124	P58	10,5 cm ammo	Ehrich & Graetz	Berlin		1939
124	ast	10,5 cm ammo	Joh. Hauff	Lichtenberg (B)		1941
125		gas-mask part				
125		shell con- tainer	FcoW or FWCo			1936 – 37
126		3,7 cm ammo				
127 727?	DLU, dlu		E. Lüneschloss	Solingen (NW)		1940 – 41
127 727?	cxb	P38 hol.	Joseph Moll	Goch (NW)		1940 – 41

129		wooden ammo box				
130		pioneer tool	Carl Sauer	Berlin		
130		pioneer tool	IBB	Berlin		1937
130		cable drum	HOCRA ?			1939
131		tool	Mauser Werke	Oberndorf (BW)		1934
131	Rh.S. 705	8,8 – 10,5 cm primer	Gerätebau GmbH	Mühlhausen (Th)		1939
132		P08, .22 cal. conver- sion kit, wooden box	Erma	Erfurt (Th)		Weimar
132	S/27G	K98k	Erma	Erfurt (Th)		1935
133		bunker lamp				
134		RG34 cln. kit	G. Appel	Spandau (B)		1935
134	emy	field phone	Friedrich Merk	München (By)		1941
134		G43 parts for Gustloff and Walther	Manufacture d. Armes de St. Étienne	St. Étienne (FR)		1943 – 44
135	S/42	K98k	Mauser Werke	Oberndorf (BW)		1935
135	bmo		Hans Deuter	Augsburg (By)		1939
135	byf	G41M	Mauser Werke	Oberndorf (BW)		1941 – 42
135	byf	K98k, P08, P38, MP44 parts	Mauser Werke	Oberndorf (BW)		1941 – 45
135	Mauser	HSc pist.	Mauser Werke	Oberndorf (BW)		1941 – 45
135	ar	K98k	Mauser Werke	Borsigwalde (B)		1944
135	svw	K98k, VK98, P38	Mauser Werke	Oberndorf (BW)		1945
136		98 chamber cleaning tool				
136		P08 hol.	Carl Ackva	Bad Kreuz- nach (RP)		1934
136			Hans Deuter	Augsburg (By)		1934

136		P08 hol.	Hans Deuter	Augsburg (By)		1939
136		MG band box				1939
136		leather goods	Lago Bayern	München (By)		1939
136	brh, 743	MG band box	Schaltbau	München (By)		1940
136		horse leather equipmnt	Ph. Riebel und Söhne	Ingolstadt (By)		1940, 43
136	eus	wooden ammo box	J. Ehlers	Hamburg		1941
136	cww	flr gn. hol.	Carl Weiss	Braunschweig (Ni)		1941
136	bdt	Brng. HP hol.	Salewa	München (By)		1941
136	bdr	Brng. HP hol.	R. Erhardt	Pössneck (Th)		1941, 43
136	gmn	flr gn. hol., leather pouch	Riebel und Söhne	Ingolstadt (By)		1942
137	bwx	grenade	Ruhrstahl	Hattingen (NW)		
136	bdt	horse saddle	Salewa	München (By)		1943 – 44
138	cny		C. Pose	Berlin		
138	krm	for foreign contractors	C. Pose	Berlin		
138	S/239	98 bay.	Herder	Solingen (NW)		1935
139	dla	P38 hol.	Karl Barth	Waldbröhl (NW)		1941 – 42
140	ch	rifle grenade launcher 7,92x94	F. N.	Lüttich (BE)	Zorn	
140		FN 10/22 pistol, Brng. HP pist., P38 pist. parts	F. N.	Lüttich (BE)	Zorn	- 1944
140			F. N.	Lüttich (BE)	Zorn	1942 – 44
140		part for MG optics				

140	ch	K98k parts for Mauser, Gustloff	F. N.	Lüttich (BE)	Zorn	1944
141		5 cm armor grenade				1941
141		sugar pouch				
141	cwg	grenade smoke explosive	WASAG	Goswig (SA)		1941
141	joa	P08 hol.	Carl Heinichen	Dresden (Sn)		1941
142		frying pan	BFG			
142		pouch for MG tools				
142		P08 hol.	Carl Heinichen	Dresden (Sn)		1935 – 36, 38
142		P08 hol.	Otto Reichel	Lengefeld (Sn)		1935 – 39
142		pouch for telephone	B & G			1936
142		entrenching tool	Kjellberg Maschinen	Fürstenwalde (Bb)		1936
142		tape measure	Massi			1935 – 38
142		P08 hol.	Gebr. Klinge	Dresden (Sn)		1936 – 38
142		theodolite				1937
142	jsd	tea-container	Gustav Reinhardt	Berlin		1937 – 38
142		P08 hol.	Stecher, Moritz	Freiberg (Sn)		1937
142		fork-spoon	CFH			1937 – 38
142		tea/coffee-container	LGA			1937
142		fork-spoon	GAG			1938
142		fork-spoon	BFG			1938
142		field kitchen	JSD			1938
142		P08 hol.	Karl Böcker	Waldbröhl (NW)		1939
142		soldering lamp	H			1937, 39
142	ffr		E. Thielenhaus	Wuppertal (NW)		1941
142		fuse setting				1942
143		folding knife				
143 140?	Ch	K98 gren. launcher	F. N.	Lüttich (BE)		1942

144		wooden box				
144		FLAK 2 cm tool	Rh			
145		pioneer tools	Garantoska ?			
145		pliers for fuses				
145		pioneer saw	F. A. Schmidt	Remscheid (NW)		
145		pioneer saw	Seeger	Offenbach /Main (He)		1936
145		wire cutter	C. Mesenhöller	Remscheid (NW)		1936, 38
145		carbide lamp				
145		horse hoof cleaning knife	Wolfertz & Evertz	Solingen (NW)		1936
145		horse bride				1937
145		fork-spoon	O. H. W.			1937
145		spade	IAIHv ?			1937
145	logo	P08 hol.	Kritzler KG	Köln-Rebbelroth (NW)		1937
145		wire cutter	VPW			1938
145		clamp tool	Gustav Klauke	Remscheid (NW)		1938
145	logo	metal box	R & S			1938
145	bdk	clamp tool	Schneiderwerke, St. Ingbert	Saar (SI)		
145		optic device	Opticotechna	Prerau (CZ)		
145	gqm	pliers, tools	Loch & Hartenberger	Idar Oberstein (RP)		
145		leather pouch	Karl Barth	Waldbröl (NW)		1939
145	gqm	MP40 mag.	Loch & Hartenberger	Idar Oberstein (RP)		1942
145		MG42 tool	B			
145	jln		Deutsche Lederwerkstätten	Pirmasens (RP)		1942 – 43
145	jln	P38 hol., P08 hol.	Deutsche Lederwerkstätten	Pirmasens (RP)		1942 – 44
145		2 cm fuse				1944
145	bdk	2 cm mag.	Schneiderwerke, St. Ingbert	Saar (SI)		1944
146		binocular case	Busch			

146	gpk	art. fuse	Winkler und Dünnebier	Neuwied (RP)		1943
147		MG34 spring container				
147		MG tool				
147	cof	MG42 top cover	Carl Eickhorn	Solingen (NW)		
147	bpr	MG42 parts	J. Grossfuss	Döbeln (Sn)		1942
148	dfb	cal. .22 conversion kit	Gustloff-Werke	Suhl (Th)		
150	bwz	horse gas-mask	Auer-Gesellschaft	Oranienburg (Bb)	159 ?	
150		table lamp	ErGi			1938
151		2 cm case				1942
152	wb	2 cm case	Hugo Schneider	Köpenick (B)		1942
153		protecting part	WAE ?			1935
153	ews	art. fuse	Skodawerke	Königgrätz (CZ)		1942
154	erg		A. Döppert	Kitzingen (By)		1942
155	S/245	98 bay.	Jetter u. Scherer	Tuttlingen (BW)		1936 – 38
155		98 bay.	J. Sch.			1937 – 39
156	bva	Flak 8,8 instrument	Petravic	Wien (AT)		1944
157	P	art. case	Polte	Magdeburg (Sn)		1936
157	wg	1,3 cm ammo	Hugo Schneider	Altenburg (Th)		1943
158		igniter				1941
159		flrqn. hol.	E. G. Leuner	Bautzen (Sn)		1937
159		P08 hol.	E. G. Leuner	Bautzen (Sn)		1938,39,41,42
159		first aid pouch	E. G. Leuner	Bautzen (Sn)		1939,44
159		knapsack	E. G. Leuner	Bautzen (Sn)		1940,43
159		Brng. HP hol.	E. G. Leuner	Bautzen (Sn)		1941
159	bla	MG sling	E. G. Leuner	Bautzen (Sn)		1943
159	bla	G43 mag. pou., P38 hol.	E. G. Leuner	Bautzen (Sn)		1944

159		horse saddle	E. G. Leuner	Bautzen (Sn)		1940, 44
159	ros	P38 hol.	E. G. Leuner	Bautzen (Sn)		1944
159	ros	K43 mag. pou.	E. G. Leuner	Bautzen (Sn)		1944 – 45
160		measuring instrument	GEME W.U.			
161	eev	2 cm case	Fr. Braun	Tambach-Dietharz (Th)		
161 101?	cdg		Auwaerter und Bubeck	Stuttgart (BW)		1940
161	am	1,5 cm ammo	Gustloff-Werke	Hirtenberg (AT)		1943 – 44
162		pocket knife	Gräfrath Gebr.			
162		M1935 pist	P. Beretta	Gardone (IT)		
163		leather goods	G. J. Ensink	Ohrdruf (Th)		1937
163		tool				1935
163		tool	R G????t			1937 – 38
163	dtu	P08 hol.	G. J. Ensink	Ohrdruf (Th)		1939, 41
163		gas mask part	H. A. E.			1940
163		field spade	R H.			1940
163		wire cutter	Kampmann	Schmalkalden (Th)		1940
163	joa		Carl Heinichen	Dresden (Sn)		1941
163	dxd	wooden ammo box	A. Günzel	Eisfeld (Th)		1943
165		MP40 parts				
166		art. range finder	Wild	Heerbrugg, Schweiz		1943
167	dxd	wooden ammo box	A. Günzel	Eisfeld (Th)		1944
170		tape measure				
170		leather pouch	Otto Graf	Leipzig (Sn)		1936
170		P08 hol.	Ehrhardt und Kirsten	Leipzig (Sn)		1938
170		ammo box				1938
170		flr gn. hol.	Albin Scholle	Zeitz (SA)		1938 – 39
170		K98k sling				1939
170		P08 hol.	Albin Scholle	Zeitz (SA)		1939

170	bdq	flrqn. hol.	Ehrhardt und Kirsten	Leipzig (Sn)		1940 – 41
170	bcb	pouch	Otto Graf	Leipzig (Sn)		1940 – 41
170	bcb	P08 hol.	Otto Graf	Leipzig (Sn)		1940 – 42
170		P08 hol.	E .G. Leuner	Bautzen (Sn)		1941
170	bdq	P08 hol.	Ehrhardt und Kirsten	Leipzig (Sn)		1941
170	bdk	2 cm magazine box	Schneiderwerke, St. Ingbert	Saar (SI)		1942
170		pouch and sling for lantern	Wilhelm Seippel, ??? Maschinenfabrik	Bochum (NW)		1942
170	hsu	K98k rear sight protection	Sparfeld	Leipzig (Sn)		1942
170	bmc	soup container	Geithainer Emaillierwerk	Geithain (Sn)		1943
170	bmu	leather strap	Carl Kuntze	Penig bei Burgstädt (Sn)		1943
170	hsu	PP hol. and other 7,65 holsters	Sparfeld	Leipzig (Sn)		1944
170	knb	Flak 8,8 cm part	Albert Schmidt	Leipzig (Sn)		1944
170	bdq	ammo box 3,7	Ehrhardt und Kirsten	Leipzig (Sn)		1945
172	avu	1,3 cm ammo	Silva Metallwerke	Genthin (SA)		1940
173	gjj	test instrument	Karl Seeger	Offenbach /Main (He)		1941
173	jhv		Metallwaren-Waffen-u. Mf.	BudaPest (HU)		1941 – 44
173		G98/40 parts				1942 – 44
174	P154	3,7 cm case	Polte, Werk Grüneberg			1935, 1938 – 39
174	P154	2 cm ammo	Polte, Werk Grüneberg			1940
175	act	2 cm ammo	A. Ruhfus	Neuss/Rhein (NW)		1944
176?		scales				
177		MG42 buffer part				

178		clock & wooden stand	Junghans	Schramberg (BW)		1942
178	cja	art. fuse	Junghans	Schramberg (BW)		1944
179	jkh		Carl Busse	Mainz (RP)		
179	JKB	P39(t), (CZ38) hol.	Carl Busse (?)	Mainz (RP)		1940
181	E&G					1936
181		ammo box				1939
181		gasmask box	Prestag	Berlin-Neukölln (B)		1940
182		carrying frame for 10,5 shell				
182	ftc	Brng. HP hol.	Frost und Jahnel	Breslau (PL)		1941 – 42
182		flrqn. hol.	Frost und Jahnel	Breslau (PL)		1937
182		P08 hol.	Frost und Jahnel	Breslau (PL)		1938 - 41
182		StarB hol.	Frost und Jahnel	Breslau (PL)		1938 – 41
182	ftc	StarB hol. P08 hol.	Frost und Jahnel	Breslau (PL)		1938, 40, 41
182		flrqn. hol.	Krüger	Breslau (PL)		1940
182		Field forge	EHSt			1940
182	goq	leather goods	Landes-Lieferungs-Genossenschaft	Breslau (PL)		1941
182	ftc	horse saddle	Frost und Jahnel	Breslau (PL)		
182	ftc	P38p hol.	Frost und Jahnel	Breslau (PL)		1942
182	grz	harness	Krüger	Breslau (PL)		194
182	grz	Brng. HP hol.	Krüger	Breslau (PL)		1941, 43, 44
182	grz	first aid kit, pouch, horse leather equipment	Krüger	Breslau (PL)		1943 – 44
182	bnz	Brng. HP hol.	Steyr-Daimler-Puch	Steyr (AT)		1944
183		sharpening steel	Volk-Stahl			1939
183	dtu	P08 hol.	G. J. Entsink	Ohrdruf (Th)		1941
183	ewg	3,7 cm ammo clip	Franke	Mühlhausen (Th)		1944

185		gas-mask	ABG			1938
185	dta	P08 hol.	A. Waldhausen	Köln (NW)		1941
186	it is 186	P08 hol.	R. Ehrhardt	Pössneck (Th)		1937, 39
186	bdr	P08 hol.	R. Ehrhardt	Pössneck (Th)		1943
187	brg	shield for panzer-schreck	H. W. Schmidt	Döbeln (Sn)		1944
188		measuring instrument	Franz Kuhlmann	Rüstringen i.O. (Ni)		
188		ZB-37 MG for Spain	Waffenw. Brünn			1943 – 44
189	cls	MG 42	Steyr-Daimler-Puch	Warschau (PL)		
189		m35 pist. mag.	Steyr-Daimler-Puch	Warschau (PL)		
189		MP35 mag				
190			Auwaerter und Bubeck	Stuttgart (BW)		1939
190	asx	8,8 ammo case	Hoesch AG	Dortmund (NW)		1942
190	awa	8,8 ammo part	Schmiedag	St. Andreasberg (Ni)		1942
190	dln	wooden ammo box	Albert Haltenhoff	Odertal, bei Bad Lauterberg/Harz (Ni)		1944
190	bvv	crank	Rothmüller-Mewa	Wien (AT)		1944
191		field phone	ERKA	Berlin		1942
194			Matra	Frankfurt (He)		1937
195	dqc	MG34 part	Eugen Ising	Bergneustadt (NW)		
195		Mauser HSc hol.				
195		carbide box				
195		shaving bowl				
195	P439	case	Eisenwerk Rothe Erde	Dortmund (NW)		1937
195		P08 hol.	Karl Böcker	Waldbröhl (NW)		1938 – 40
195	epf	P08 hol.	Karl Böcker	Waldbröhl (NW)		1940 – 41
195		horse leather equipment	Karl Böcker	Waldbröhl (NW)		1940

195	dla		Karl Barth	Waldbröhl (NW)		1939 – 44
195	dta	P08 hol., P38 hol.	A. Waldhausen	Köln (NW)		1941 – 42
195	dta	Brng. HP hol.	A. Waldhausen	Köln (NW)		1941 – 43
195		P38 hol.	Franz u. Karl Voegels	Köln (NW)		1940
195	epf	Brng. HP hol.	Karl Böcker	Waldbröhl (NW)		1941 – 42
195	ewx	P38 hol.	Franz u. Karl Voegels	Köln (NW)		1941 – 44
195	dla	P08 hol.	Karl Barth	Waldbröhl (NW)		1942
195	cww	P08 hol.	Carl Weiss	Braunschweig (Ni)		1942
195	dkk	P38 hol.	F. Offermann	Bensberg (NW)		1942 – 43
195	dkk	P08 hol., 98k grenade launcher pouch, Astra 600 hol.	F. Offermann	Bensberg (NW)		1942 – 44
195	dta	flr gn. hol.	A. Waldhausen	Köln (NW)		1942, 44
195	ewx	P08 hol.	Franz u. Karl Voegels	Köln (NW)		1942 – 44
195	dkk	P38 hol.	F. Offermann	Bensberg (NW)		1942 – 44
195	epf	horse leather equipment	Karl Böcker	Waldbröhl (NW)		1943
195	dla	Star mod. B hol.	Karl Barth	Waldbröhl (NW)		1943
195	dla	Brng. HP hol. MG tool pouch	Karl Barth	Waldbröhl (NW)		1941, 43, 44
195	epf	flr gn. hol.	Karl Böcker	Waldbröhl (NW)		1944
196	eds	2 cm fuse	Zündapp	Nürnberg (By)		1943
198	ecy	Wgr.z.38c fuse	Fouquet & Franz	Rottenburg (BW)		1943
201	P490	2 cm case	Hugo Schneider	Altenburg (Th)		1939 – 40

201	BK	7,9 mm B-Patr.	Hugo Schneider	Altenburg (Th)		1940
201	how	wooden box for 8,8 cannon	Empe-Werk	Niemens (CZ)		1943
202		binoculars	Carl Zeiss	Jena (Th)		1933, 36, 39
202	bmj	binoculars	Hensoldt	Wetzlar (He)		
202		tape measure	Geier	Lengerich (NW)		
203	cnb	art. fuse – French cannon	Presta Metallwerk	Wuppertal-Eilberfeld (NW)		
203	kpm	for foreign contractors	Franz Corbau	Berlin		
204		optics				
204			Hohmann	Kaiserslautern (RP)		
204	evg	MG tool pouch	Max Oswald	Karlsruhe (BW)		
204	666	meas. instrument	Rudolf Dinglinger	Köthen (SA)		
204		wooden ammo box				
204	avx	K43 mag.	Südmittel AG,	Mussbach (BW)		
204		medical tool	Aesculap			
204		case basket	WJ			1935
204		gas-mask part	VJW			1938 – 39
204		horse comb				1942
204		carbide lamp	BB			1936
204		plate	BB			1936
204		P08 hol.	Wilhelm Brand	Heidelberg (BW)		1936, 38, 39
204	jvf	P08 hol.	Wilhelm Brand	Heidelberg (BW)		1941
204	jvf	leather goods	Wilhelm Brand	Heidelberg (BW)		1936, 38, 39, 41, 44
204		tape measure	U			1937, 39, 43
204		gas-mask part	AFMA			1939
204		gunpowder tank	W			1939

204	ebe	gas-mask part	Walter	Speyer (RP)		1941
204	hjj	P38 hol.	Kimnach & Brunn	Kaiserslautern (RP)		1941, 43
204	gmo	P38 hol.	Rahm & Kampmann, RBNr 0/0655/0013	Kaiserslautern (RP)		1944
204	dtf	wooden ammo box	Preh	Bad Neustadt (By)		1944
204	hcg	MP40 mag. pouch	Alex & Hugo Feldhoff	Erkrath (NW)		1944
204		MP44 mag. pouch				1944
205	fue	Flak 8,8 part	Skodawerke	Dubnica (CZ)		
206	gxy	harness	Gebr. Klinge	Dresden (Sn)		1944
207		cipher device ?				
207		horse saddle	Otto Koberstein	Landsberg a/W – near B (PL)		1935
208	eme	art. fuse	Deisting & Co.	Kierspe (NW)		1944
210	ejo	lamp (bakelite)	Preßwerk AG	Essen (NW)		
210		battery case (bakelite)				
210	cxb	P38 hol., pouch for grenade launcher	Joseph Moll	Goch (NW)		1941 – 44
211	ar	case extractor	Mauser Werke	Borsigwalde (B)		
211		P08	Mauser Werke	Oberndorf (BW)		1935
211	S/42	MG13 mag.	Mauser Werke	Oberndorf (BW)		1935
211	S/42G	K98k	Mauser Werke	Oberndorf (BW)		1935
211	S/243G S/243	K98k	Mauser Werke	Borsigwalde (B)		1935 – 36
211	243	K98k parts for Mauser, Borsigwalde				1940
211	asr	2 cm case	HAK	Hamburg		1942
212		vehicles	E. H. von Lienen	Bochum (NW)		1936

213		measure instrument	Gebr. Wichmann	Berlin		
213		measure instrument	A.Ott	Kempten (By)		
213	auf	art. fuse	Mettall Guss u. Presswerk	Nürnberg (By)		1944
214		MG34 parts				
214		K98k parts for Erma				
214	"S"	MG13 mag.				1935
214	"S"	water canister for MG08				1935
214	S/147G S/147	K98k	Sauer und Sohn	Suhl (Th)		1935 – 38
214	S/178	98 bay	Gebr. Heller	Marienthal (Th)		1936 – 37
214	147	K98k	Sauer und Sohn	Suhl (Th)		1938
214	237	K98k	Berlin-Lübecker Maschinenfabriken	Lübeck (SH)		1939 – 40
214	duv	ZF41 mount	Berlin-Lübecker Maschinenfabriken	Lübeck (SH)		
214	duv	K98k, G41 (W), G-K43, flaregun	Berlin-Lübecker Maschinenfabriken	Lübeck (SH)		1940 – 44
214	qnw	triggerg. + winter trigger for K98k		Lübeck (SH)		1942 – 44
214	LU	K98k floorplate for dou				1943
214	qnw	MP44 mag.		Lübeck (SH)		1944
214	qve	K43	Berlin-Lübecker Maschinenfabriken	Lübeck (SH)		1945
215		tool	J.V.?			
216		basket for 10,5 cm ammunition				
216	onm	box for MG ZF	Saunier	Paris (FR)		
216	S/185	98 bay.	Elite Diamantwerke	Chemnitz (Sn)		1936

217	cme	metal box for range-finder	Wichmann	Berlin		
217		binoculars	Oigee	Berlin		
217		micro scope	Korth	Berlin		
217	bws	artillery fuse activation delay time setting	Kurt Pannke	Berlin		
217		leather box for battery	??Ilmorgen	Berlin		
217	clm	metal box	Biedermann & Czarnikow	Berlin		
217		leather box for battery	Krieger & Faudt	Berlin		1934
217		boxes	Biedermann & Czarnikow	Berlin		1936
217		leather box for battery	Hensoldt	Wetzlar (He)		1938
217		battery box	K.F.B.			1939
217	bmk	battery box	Srb & Stys	Prag (CZ)		
217		tilt indicator				
217	cjl	MG 42 sight	Paul Gebhardt	Berlin		
218	S/185	98 bay.	Elite Diamantwerke	Chemnitz (Sn)		1937
218		98 bay.	Elite Diamantwerke	Chemnitz (Sn)		1937 – 40
218	i	98 bay.	Elite Diamantwerke	Chemnitz (Sn)		1941
219		RG34 cln. kit	Mundlos AG	Magdeburg (SA)		1935 – 36
219	S/242	98 bay.	Solinger Axt u. Hauerfabrik	Solingen (NW)		1936 – 37
220	S/178G	98 bay.	Gebr. Heller	Marienthal (Th)		1935
220	cxk	2 cm fuse	Kontaktwerk Josef Bühler	Freiburg (BW)		1943 – 44
221	d	K98k parts for Gustloff	Brehmer	Leipzig (Sn)		
221	f	K98k parts for Gustloff	Karl Heise	Leipzig (Sn)		
221		K98k parts for BSW				1939
221		K98k parts for Gustloff				1941

221	e	K98k parts for Gustloff	Hermann Köhler	Altenburg (Th)		1942
222	raj	ammo case				
222	acb	art. fuse	Rheinisch-Westfälisches Kunststoffwerk	Mühlheim (NW)		1943 – 44
223	P315	2 cm ammo	Märkisches Walzwerk	Strausberg (Bb)		1936
223	ejc	mines	Preussag	Rüdersdorf (Bb)		1942
225	P199	3,7 cm case	Monheimer Ketten- u. Metallwarenindustrie	Monheim (NW)		1936
225	Ky	RG34 cln. kit	Kyffhäuserhütte (Paul Reuss)	Artern (Th)		1936 – 40
225	bwo	3,7 cm case	Rheinmetall-Borsig	Düsseldorf (NW)		1942
225	rdf	8,8 cm gren.	WASAG	Reinsdorf (Sn)		1943
227	rdf	8,8 cm gren. parts	WASAG	Reinsdorf (Sn)		1939
229	S/238	98 bay.	Dürkopp-Werke	Bielefeld (NW)		1935 – 36
230	DL227	3,7 cm grenade part	Nähmatag	Radebeul (Sn)		1936
231	P414	2 cm case	Silva Metallwerke	Magdeburg – Neustadt (SA)		1937 – 38
232		grenade				
232	P120	2 cm case	Dynamit AG	Hannover-Empelde (Ni)		1937 – 39
232	emp	2 cm case	Dynamit AG	Hannover-Empelde (Ni)		1943 – 44
234		MG08 water box				
234		carbide lamp	A. Sartorius	Wuppertal (NW)		1936
234			Franz u. Karl Voegels	Köln (NW)		1936
234		pioneer axe, pliers				1936
234		leather goods	Karl Barth	Waldbröhl (NW)		1936
236		sanitary backpack				

236		P08 hol.	Karl Böcker	Waldbröhl (NW)		1936
238		MG34 bolt part				
239	Rhs195	bomb fuze				1937
240		part of V2 rocket				
241	S/42	K98k	Mauser Werke	Oberndorf (BW)		1935
243		98 bay.	Mundlos AG	Magdeburg (SA)		1938 – 39
243		RG34 cln. kit	Mundlos AG	Magdeburg (SA)		1938 – 40
243	ab	RG34 cln. kit	Mundlos AG	Magdeburg (SA)		1940 – 42
243	ab	98 bay.	Mundlos AG	Magdeburg (SA)		1941, 42
244	P90	10,5 cm ammo	Bergmann Elektr. Werke	Wilhelmsruh (B)		1936
244	S90	3,7 cm ammo	Bergmann Elektr. Werke	Wilhelmsruh (B)		1937
244	90	fuse	Bergmann Elektr. Werke	Wilhelmsruh (B)		1939
244	arl	2 cm fuse	Bergmann Elektr. Werke	Wilhelmsruh (B)		1942
247		ignition 28	Dynamit AG	Förde (?)		1938
250		measuring tool	W. Göhlers	Freiberg (Sn)		
250		98 bay.	F. Herder	Solingen (NW)		1937
251	414	2 cm case	Silva-Metallwerke	Magdeburg (SA)		1938
251		Star mod. B pist.	Star B. Echeverria S.A.	Eibar (ES)		
251		Astra 300 pist.	Unceta y Compania S.A.	Guernica (ES)		
251		French Unique mod. 16, 17 + Kriegsmodell pist.	Manufacture D'Armes des Pyrenees, Hendaye	(FR)		
251		MAB mod. D pist.	Manufacture D'Armes des Bayonne	Bayonne (FR)		
251	jwh	98 bay., K98k lower	Manufacture d'Armes	(FR)		1941 – 44

		band for Gustloff 43, G41 and G43 cross lug	Chatellerault (MAC)			
251		1935A French pist. #550 and up	Société Alsacienne de Constructions Mécaniques (SACM) (see 655)	(FR)		1941 – 44
253		M1922 sabre	Carl Eickhorn	Solingen (NW)		
253	S/174	98 bay	WKC	Solingen (NW)		1935 – 37
253	S/173	98 bay.	A. Coppel	Solingen (NW)		1936
253	S/176	98 bay.	Weyersberg	Solingen (NW)		1936
253	S/178	98 bay.	Gebr. Heller	Marienthal (Th)		1936
253	S/175	98 bay.	Höller	Solingen (NW)		1936 – 37
253	S/242	98 bay.	Solinger Axt u. Hauerfabrik	Solingen (NW)		1936 – 37
253	S/155	98 bay.	E. u. F. Hörster	Solingen (NW)		1937
253		98 bay.	Berg & Co.	Solingen (NW)		1937 – 39
253		98 bay.	Josua Cortis	Reimscheid (NW)		1937 – 39
253		98 bay.	E. u. F. Hörster	Solingen (NW)		1937 – 40
253		98 bay.	F. Herder	Solingen (NW)		1937 – 40
253		98 bay.	Carl Eickhorn	Solingen (NW)		1937 – 40
253		98 bay.	WKC	Solingen (NW)		1937, 38, 40
253		98 bay.	Ernst Pack u. Söhne	Solingen (NW)		1937, 39, 40
253		98 bay.	A. Coppel	Solingen (NW)		1937, 39, 40
253	S/172	98 bay.	Carl Eickhorn	Solingen (NW)		1937, 40
253	cof	98 bay.	Carl Eickhorn	Solingen (NW)		1941

253		98 bay.	Clemen & Jung	Solingen (NW)		1938 – 39
253		98 bay.	P. Weyersberg	Solingen (NW)		1938 – 40
253		98 bay.	F. W. Höller	Solingen (NW)		1938 – 40
253	ddl	98 bay.	Josua Cortis	Remscheid (NW)		1940
253		98 bay.	Mundlos AG	Magdeburg (SA)		1940
254	cnd	MP40 trigger housing	National Krupp Registrier Kas-sen	Berlin-Neu-kölln (B)		1943
254		MP44 trigger housing	National Krupp Registrier Kas-sen	Berlin-Neu-kölln (B)		1944 – 45
255	ctd	MP44 mag.	Anton Reiche	Dresden (Sn)		
256		10,5 cannon fuze				1940
258	drh	art. fuze	Thiel	Ruhla (Th)		
258	P94	8,8 cm case	Kabel- u. Metall-werke Neumeyer	Nürnberg (By)		1936
258	bpm	fuse 8,8 cm	MIFA	Sangerhau-sen (Sn)		1942
258	hhj	fuse 8,8 cm	Thiel	Ruhla (Th)		1941, 43
262		6x30 field-glass	Carl Zeiss	Jena (Th)		
263		fuse				1937?
265	Ky	RG34 cln. Kit	Kyffhäuserhütte (Paul Reuss)	Artern (Th)		1936 – 37
265		8,8 cm gre-nade				
266		BMW en-gine R35				1938
269	dom	rifle gre-nade part	Westfälische Metallindustrie	Lippstadt (NW)		
269		fork-spoon	WMI			1937
270	P151	8,8 brass case	RWS	Stadeln / Fürth (By)		1936
270	arx	4 cm case	Collis Metall-werke	Westhausen, Aalen (BW)		1941
270	arx	8,8 cm case	Collis Metall-werke	Westhausen, Aalen (BW)		1943

271	asr	2 cm case – 2,5 cm case	HAK – Hanseati- sches Ketten- werk	Hamburg		1942
271	arx	Flak18 case	Collis Metall- werke	Westhausen, Aalen (BW)		1943
271	rrm	2 cm case	HAK – Hanseati- sches Ketten- werk	Hamburg		1945
273	ago	gas mask part	E. Luft	Tetschen (CZ)		1941
275	rdf	ignition	WASAG	Reinsdorf (Sn)		
276		8,8 cm gre- nade				
276	P131	14,9 cm ammo	D. W. M.	Borsigwalde (B)		1936
277			Julius Pintsch	Berlin		
277	htu	MG42 bat- tery box	Strauss & Co.	Schmölln (Th)		
278		measure in- strument	Franz Kuhlmann	Rüstringen i/O (Ni)		1934
278		leather pouch	Franz Kuhlmann	Rüstringen i/O (Ni)		1936
279		MG belt				
279		flrgn. hol.	C. Otto	Pinneberg (SH)		1938
279		pouch	Kroymann & Co.	Hamburg		1937, 40
279		binocular case	Kroymann & Co.	Hamburg		1939
279		pouch	Sachs & Deis- selberg	Hamburg		1940
279	dtv	1922 Brng.hol. PP hol.	C. O. Gehrckens	Pinneberg (SH)		1940 – 42, 44
279		binocular case				1941
279	dtv	P08 hol.	C. O. Gehrckens	Pinneberg (SH)		1941
279	dtu		G. J. Entsink	Ohrdruf (Th)		1941
279	hfr	backpack	Sachs & Dreis- selberg	Hamburg		1942
279	dlu, DLU	P08 hol.	E. Lüneschloss	Solingen (NW)		1943
279	tjg	MP3008		Hamburg area		1945
280		caliber drift				

280	ayf	K98k floor-plate	Erma	Erfurt (Th)		
280	cpw	MG34 part	Claes & Co.	Mühlhausen (Th)		
280	S/27	K98k	Erma und Geipel	Erfurt (Th)		1935 – 37
280		K98k bolt stop for Sauer				1936
280		cal. .22 conversion kit, receiver, bolt, magazine	Erma	Erfurt (Th)		1937 – 38
280		K98k stock parts for BSW				1938
280	S/243, 243	K98k	Mauser Werke	Borsigwalde (B)		1938
280	27, ayf	MP38	Erma	Erfurt (Th)		1938 – 41
280		2 cm Flak mag.	Olympia Büro-maschinen-werke	Erfurt (Th)		1939
280	27, ayf	MP40	Erma	Erfurt (Th)		1940 – 43
280	27	K98k	Erma	Erfurt (Th)		1938 – 40
280		2 cm mag.	Stubgen	Erfurt (Th)		1939
280	ax	K98k	Feinmechanische Werke	Erfurt (Th)		1940 – 41
280	ayf	flare gun	Erma	Erfurt (Th)		1941
280	ce	K98k	Sauer und Sohn	Suhl (Th)		1942 – 44
280	ayf	MP44 mag.	Erma	Erfurt (Th)		1944
280	qlv	MP44 mag., MP44 parts				1944 – 45
282	fer	cartridges	Metallwerk Wandhofen	Schwerte (NW)		1942
285	jln	wooden ammo box	Deutsche Lederwerkstätten	Pirmasens (RP)		
285		timer				
285	P327	2 cm case	Orga AG	Nürnberg (By)		1940

285		P08 hol.	Carl Ackva	Bad Kreuznach (RP)		1940
286		hol. for field telephone parts	Karl Seeger	Offenbach /Main (He)		1935
286		horse saddle	-----ury & Co			1936
286		horse saddle	Carl Busse	Mainz (RP)		1936
286		flr gn. hol., knapsack	Carl Busse	Mainz (RP)		1937
286		box for MG bands				1938
286		P08 hol.	Genschow&Co	Berlin		1938
286		Mauser HSc hol.	G. Genschow	Hachenburg (RP)		1938, 40 – 42
286			Carl Busse	Mainz (RP)		1939
286		P08 hol.	Carl Busse	Mainz (RP)		1939 – 41
286		MG tool bag	Carl Ackva	Bad Kreuznach (RP)		1939 – 40
286		P08 hol.	Carl Ackva	Bad Kreuznach (RP)		1940
286		P38 hol.	G. Genschow	Hachenburg (RP)		1940
286		P38 hol. Changed for P39(t)	G. Genschow	Hachenburg (RP)		1940
286	dos	tool	MAN	Augsburg (He)		1941
286	jkh	horse leather equipment	Carl Busse	Mainz (RP)		1941
286	jkh	P08 hol.	Carl Busse	Mainz (RP)		1941
286		tool				1941
286	jkh	Brng. HP hol.	Carl Busse	Mainz (RP)		1941 – 44
286		P08 hol.	G. Genschow	Hachenburg (RP)		1941
286	jhg	Mauser HSc hol.	G. Genschow	Hachenburg (RP)		1941 – 42
286	jhg	Sauer 38H hol.	G. Genschow	Hachenburg (RP)		1942

286	jhg	P38 hol.	G. Genschow	Hachenburg (RP)		1942 – 44
286	fyr	ammo cradle for French 7,5 cm	Gebr. Müller	Worms (RP)		1943
286	jkh	Brng. HP hol.	Carl Busse	Mainz (RP)		1943
288	sxk	2 cm magazine				
288	cpj	2 cm Flak parts	Havelwerk	Brandenburg		
288	czs	2 cm fuse	Brennabor Werke	Brandenburg		1943 – 44
288	afv	MP44, StG44	Hugo Schiffer	Lüdenscheid (NW)		1945
289?	Cww		Carl Weiss	Braunschweig (Ni)		1942
294	P345	3,7 cm case	Silva-Metallwerke	Genthin-Liesewald (SA)		1936
294	P490	2 cm case	Hugo Schneider	Altenburg (Th)		1940
295		firing pin for cannon				
295	jhv	wooden ammo box	Femaru-Fegyver-Es-Geppgyar	BudaPest (HU)		
298	S323	MG lafette	Brandenburger Fahrrad und Motorradwerk	Brandenburg		1936
300	jwa	MKb42 mag. pouch	Moritz Stecher	Freiberg (Sn)		
300	euh	rifle grenade launcher sight, flare gun	Meinel-Scholer	Klingenthal (Sn)		
300		transport box				
300		air pressure gauges				
300		ID tag				
300		horse saddle	G. Passier & Sohn			1936
300			Franz u. Karl Voegels	Köln (NW)		1937
300		cutlery, plate	EFG			1939

300		red cross box	Heinrich Var----- - ??	Osnabrück (Ni)		1939
300		tape measure	Massi			1939
300		fork-spoon	GAG			1939
300	eue	P08 hol.	Otto Reichel	Lengefeld (Sn)		1939 – 43
300		manometer	H. F. S. C.			1940
300	eue	P38 hol.	Otto Reichel	Lengefeld (Sn)		1942 – 43
300	bn	egg grenade	Allgemeine Electricitätsges	Annaberg (Sn)		1941
300	dvn	tool – thread	H. F. Schnicke	Chemnitz (Sn)		1941, 43
300	dvn	callipers	H. F. Schnicke	Chemnitz (Sn)		1943
300	jwa	P38 hol.	Moritz Stecher	Freiberg (Sn)		1941 – 42
300	jwa	horse saddle	Moritz Stecher	Freiberg (Sn)		1940, 42
300	evv	MG band box, acces. box	F. A. Anker & Sohn	Jöhstadt (Sn)		1942
300	bdk	2 cm magazine box	Schneiderwerke, St. Ingbert	SI		1942
300	bdk	MG34 cleaning fluid can	Schneiderwerke, St. Ingbert	SI		1943
301		coffee grinder				
301		field kitchen	DR.G.M.			
301		knife block, plate holder				
301		funnel				
302		tape measure – 25m				
303		K98k ar parts				1942
304		cable drum	A. Fahr			1940
304		cable part	KM ?			1941
308		very late K43 parts				1945
310		morse key				
312	ABP	jerry can	Ambi-Budd Presswerk	Berlin		1942 – 43
313	ab	2 cm Flak parts	Mundlos AG	Magdeburg (SA)		

313	ab	98 bay.	Mundlos AG	Magdeburg (SA)		1942, 44
313	ab	RG34 cln. kit	Mundlos AG	Magdeburg (SA)		1943 – 44
314	gfa	3,7 cm ammo	Otto Fuchs, Metallwerke	Meinerzhagen (NW)		
314	S338	art. fuse	Otto Fuchs, Metallwerke	Meinerzhagen (NW)		1940
315		enigma				
315		leather pouch	Cobau	Berlin-Reinickendorf (B)		1936
315		telephone system	OGG ?			1937
315		el. cable plug				1938
316		calculating tool	MK			
317		ZF4 wooden case				
318		rocket part				1944
319	cdf	mines	Weseler Maschinenbau	Wesel (NW)		1944
320		metal drum				
320	bwz	gas-mask	Auer	Oranienburg (Bb)		
320		fuse, el.	EKI			
320		cleaning brush for MG				
320		pistol hol. Colt?		Kongsberg ? (NO)		
320		gas-mask				1936
320		gas-mask	AB			1937 – 39
320	crt	gas-mask	Clora Atemschutzgeräte	Schwäbisch Gmünd (BW)		1940
321	P222	3,7 cm case	Sils van de Loo & Co.	Fröndenber (NW)		1937
321	P414	2 cm case	Silva Metallwerke	Magdeburg-Neustadt (SA)		1939
321	cox	MP40 sling	Otto Ernst Busch	Eisleben (SA)		1943
323		P08 hol.	A. Fischer	Guttstadt (PL)		1938 – 39

325		Rg34 cln. kit	G. Appel	Spandau (B)		1936
325		2cm Flak part				
326		rangefinder case				
326		binocular case	Busch			1935, 37
326		binocular case				1941
326	fwq	support frame for rangefinder	Saalfelder Apparatbau	Saalfeld/Saale (Th)		1943
326	blc	binocular case	Carl Zeiss	Jena (Th)		1944
327	awf	cable drum	Maschinen- und Armaturenfabrik	Magdeburg (SA)		
327	dzw	metal box for mines	Metallwerke v. Galkowky & Kielblock	Finow (Bb)		
327		P08 hol.	Joseph Moll	Goch (NW)		1939
327		S4 250 motorcycle	Steyr-Daimler Puch	Graz (AT)		1941
327	qwo	metal box for 4,7 cm Pack				
329	P382	3,7 cm case	Hanseatisches Kettenwerk	Hamburg		1937, 39
329	P382	2 cm case	Hanseatisches Kettenwerk	Hamburg		1937, 39, 40
330		lamp (bakelite)	PS			
330		horse leather equipment	Koch & Benning	Wuppertal (NW)		
330		canon muzzle protector				
330		P08 hol.	Ruffel und Borns	Hannover (Ni)		1936
330	GW	wooden ammo box				1937
330			A. Waldhausen	Köln (NW)		1937
330		pouch	Heinrich Vorderberge	Osnabrück (Ni)		1937
330		P08 hol.	Carl Weiss	Braunschweig (Ni)		1937 – 39
330		P08 hol.	G. Passier	Hannover (Ni)		1939

331		handgre- nade part				
331		igniter for handgre- nade				1937
332	eso	binoculars	Rodenstock	München (By)		
334	enl	Flak 8,8 firing pin	AEG Allg. Elektricitätsge- sellschaft	Henningsdorf (Bb)		
334	enl	2 cm fuse	AEG Allg. Elektricitätsge- sellschaft	Henningsdorf (Bb)		1944
337			G. Genschow	Berlin		1936
337			Franz u. Karl Voegels	Köln (NW)		1936
337	va	5 cm ammo	Kabel- und Me- tallwerke Neumeyer	Nürnberg (By)		1944
338		electronics	Lorenz, Boas	Berlin		1936 - 37
338		morse key				1937
339	P198	2 cm case	Metallwarenfab- rik Treuenbrit- zen	Roederhof (Bb)		1939 – 40
339	amh	art. fuse	Hans Büllmann- Werke	Gablonz (CR)		1943
342		leather bag	Bollmann	Tuttlingen (BW)		1943
350		fieldphone	Si & Co.			1937
351	RR 459	mine fuse	Brandenburgi- sche Metallvear- beitung	Berlin		1939
352	DL609	3,7 cm gre- nade part	Richard Stock & Co.	Güntersberge (SA)		1938
354		2 cm werk- zeug pat- rone	Polte	Magdeburg (SA)		
354		3,7 Flak18 case				
354	ava	8,8 cm ammo	Polte	Magdeburg (SA)		1941
354	hac	2 cm werk- zeug pat- rone	Otto Schulz	Berlin		1942
354	aux	kurz ammo	Polte	Magdeburg (SA)		1942 – 45

355	hec	MG42 bi-pod	Steinbach & Vollmann	Heiligenhaus (NW)		
357	aux	3,7 cm ammo	Polte	Magdeburg (SA)		
357		98 bay.	F. Herder	Solingen (NW)		1937
357	dkr	2 cm Flak	Henschel	Kassel (He)		1942
357	aqs	art. fuse	Süddeutsche Armaturenfabrik	Heidenheim (BW)		1943
358		barrage baloon		Bad Saarow (Bb)		1940
358		fuse French 7,5 cm cannon				1942
358	<i>not existing</i>	P38 magazine				
359		coffee machine		maybe 358, 350		
359		weapons tool				
359		MG34 bolt part				
359	S/147 147	K98k rec. + r. sight for Sauer	Carl Walther	Zella-Mehlis (Th)		1936 – 38
359		tree screw for the scissor telescope	Carl Walther	Zella-Mehlis (Th)		1939
359	147	K98k rec. + stock for Sauer	Carl Walther	Zella-Mehlis (Th)		1939
359	480	PP, PPK P38	Carl Walther	Zella-Mehlis (Th)		1939, 40
359	147	K98k rec. for Sauer	Carl Walther	Zella-Mehlis (Th)		1940
359	ac	PP, PPK, P38	Carl Walther	Zella-Mehlis (Th)		1940 – 45
359	ax	K98k rec. for ERMA	Carl Walther	Zella-Mehlis (Th)		1941
359	ce	K98k rec. + r. sight for Sauer	Carl Walther	Zella-Mehlis (Th)		1941 – 42
359	ac	G41, G/K43	Carl Walther	Zella-Mehlis (Th)		1941 – 45
359		MP44 small parts				1944 – 45

359	ce	K98k rec. for Sauer	Carl Walther	Zella-Mehlis (Th)		1943
360			DWM	Lübeck-Schlutup (SH)		
360		flare pistol round				
360	P319	8,8 cm case	Maschinen für Massenverpackung	Lübeck-Schlutup (SH)		1939
361	117B	50 kg bomb				1939
366	kgx	food container	Emaillierwerk Krone	Oelde (NW)		1944
369	?wh	wooden box				1942
372	fb	2 cm case	Mansfeld AG	Rothenburg/Saale (SA)		1942
373	climbing iron for poles					1940
374		safety for K98k Mauser O.				1936
374	P150	8,8 cm case	Julius Pintsch KG	Werk Fürstenwalde / Spree (Bb)		1938, 40
374	auv	8,8 cm case	Julius Pintsch KG	Werk Fürstenwalde / Spree (Bb)		1941
375	Rhs357	bomb fuse				1940
376		field phone, morse device				
376		contact	F. R.			1938
377			Werk Magirus	Ulm (BW)		
378	bes	art. fuse	H. Kimmel	München (By)		1944
379	ebr	ammo box	Westermann	Neheim-Hüsten (NW)		1939
380		MGZ 34	Voigtländer	Braunschweig (Ni)		
380		calculating tool	Gebr. Wichmann	Berlin		
380		optics case	Gebr. Wichmann	Berlin		
382		carbide lamp				
382	gcq	field spade	Heinrich Jung	Halver (NW)		1941

383		binocular case	P. H. Riebel & Söhne	Ingolstadt (By)		1939
383		leather case				
383	bmo	P38 hol.	Hans Deuter RB.Nr. 0/0836/0029	Augsburg (By)		1941
383		rocket part				1944
383	TJK	MP3008				1945
384	bvw	art. fuze	Jurk Sirenenfabrik	Radeberg (Sn)		1944
387		lamp (bakelite)				
387		reworked MP38-40 mag	Haenel	Suhl (Th)		
387		pouch for flares				
387	eqf		Karl Böcker	Waldbröhl (NW)		1936
387		P08 hol.	Karl Böcker	Waldbröhl (NW)		1936, 39
387		gas-mask field gear	A. Waldhausen	Köln (NW)		1936
387		fuse 29	Richard Rinker			1940
387		P08 hol.	G. Genschow&Co	Berlin		1936 – 37
387			F. u. K. Voegels	Köln (NW)		1936 – 40
387		wire cutter	Hugo Lindner	Solingen (NW)		1937
387		leather pouch for watch	Fr. Offermann & Söhne	Bensberg (NW)		1937
387		P08 hol.	F. u. K. Voegels	Köln (NW)		1937-39
387		hoof tongs	Gustav Klath- - -			1937
387		flragn. hol.	Karl Barth			1937
387	ewx		Franz u. Karl Voegels	Köln (NW)		1941
387	eeo	8,8 cm case	D. W. M	Posen (PL)		1942 – 44
392		bunker lamp				
392	cww		Carl Weiss	Braunschweig (Ni)		

392	cww	P08 hol.	Carl Weiss	Braunschweig (Ni)		1942
392	arr	RG34 cln. kit	Braunschweigi- sche Blechwa- renfabrik	Braun- schweig (Ni)		1942 – 45
392	cww	P38 hol.	Carl Weiss	Braun- schweig (Ni)		1943
392	bnf	7,5 cm ammo	Metallwerk Wol- fenbüttel	Braun- schweig (Ni)		1944
392	rco	RG34 cln. kit	Braunschweigi- sche Blechwa- renfabrik	Braun- schweig (Ni)		1945
395		truck-body	Büssing NAG	Elbing (PL)		1938
397		Bosch part on Horch 901				
397		clock & wooden stand	Kienzle Uhren- fabriken			1941 – 42, 44
397	cxh	art. fuse	Kienzle Uhren- fabriken	Schwennin- gen am N. (BW)		1942
398	amh	art. fuse	Hans Büllmann- Werke	Gablonz (CZ)		1943
400		flr gn. hol.	L. A. S. ?			1937
400		pouch for clock	Böttcher & Ren- ner	Nürnberg (By)		1937
400		pouch for a saw	Böttcher & Ren- ner			1937
400		gas mask	MSM N			1939
400		P08 hol.	L. A. S. ?			1939
400			Schultz	Augsburg (By)		1939
400		gun tool	M. Hiessinger	Nürnberg (By)		
400	acb		Rheinisch-West- fälisches Kunst- stoffwerk	Kettwig (NW)		1944
402	awb	stirrup	Schmöle & Co	Menden (NW)		1942
403				(CZ)		
406	P	2,0 cm ammo	Polte	Magdeburg (SA)		1937
406	P	3,7 cm ammo	Polte	Magdeburg (SA)		1935, 36, 38
406		wooden box	Arnold			1936

406	P	10,5 cm ammo	Polte	Magdeburg (SA)		1936 – 37
406	P	2 – 7,5 – 8,8 cm ammo	Polte	Magdeburg (SA)		1938
406	P.M.	wooden ammo box				1938
408		FLAK 3,7 cm grenade			406 ?	
409		leather strap for field phone				
409		volt-meter, radio tube				
409		clock	Köhler & Co.	Nürnberg (By)		
410		el. meas. equipment, ohm meter	Metrawatt	Nürnberg (By)		
410	fsc	field phone	Mikrofona	Meseritz (PL)		
411		K98k rec. on Erma				1936
411	cqr	flr gn. hol., telephone hol.	Lederwerk Se- dima	Finkenwalde, Stettin (PL)		1940
412		scope lea- ther	Geyber & Co.	Berlin		
412		binocular case	Carl Zeiss	Jena (Th)		
412	P341	7,5 cm ammo	August Enders	Oberrahmede (NW)		1937
413		metal food container	MN			1937, 38
413	ABP	jerry can	Ambi-Budd Presswerk	Berlin		1939
414		scope lea- ther				
414		wooden box for scope	E. Leitz	Wetzlar (He)		
414		binoculars	E. Leitz	Wetzlar (He)		
414		meas. in- strument	Kremp	Wetzlar (He)		
414	bmj	binoculars	Hensoldt	Wetzlar (He)		
414	bmj	scope lea- ther	Hensoldt	Wetzlar (He)		1938,4 2 – 43

416	gqm	MP40 mag. part	Loch & Hartenberger	Idar-Oberstein (RP)		
416		P08 hol.	Kimnack & Brunn	Kaiserslautern (RP)		1939 – 40
416		fork-spoon, food container	MN			1937, 38
416		food container	G u S			1939
416		MG band box	W S			1939
416		P08, P38 hol., P39(t) hol.	Deutsche Lederwerkstätten = DLWP	Pirmasens (RP)		1940
416	auo	food container	Metallindustrie	Neunkirchen (SI)		1941
416	hjj		Kimnack & Brunn	Kaiserslautern (RP)		1941
416	bml	P38 hol.	Hans Römer	Neu-Ulm (By)		1941
416	jln		Deutsche Lederwerkstätten	Pirmasens (RP)		1941
418		food container	Fissler	Idar-Oberstein (RP)		1938
421	P218	10,5 cm case howitzer 18/40	Benteler-Werke	Bielefeld (NW)		1937
424	RhS	art. grenade part	Rheinmetall	Sömmerda (Th)		1937
426	bps	gas-mask	Metzeler Gummiwerke	München (By)		1941
427		folding shovel	VBW			
427		2 cm ammo				1936
428		2 cm case				
429		map desk				
429	gwr	art. slide rule	Dennert & Pape	Hamburg		1943
434		art. fuse				1939
436		3,7 cm ammo				1938
439	S/244	98 bay.	Mundlos AG	Magdeburg (SA)		
439		RG34 cln. kit	Mundlos AG	Magdeburg (SA)		1936 – 37
442	Ky	RG34 cln. kit	Kyffhäuserhütte (Paul Reuss)	Artern (Th)		1936 – 39
444		radio	R			1938

444		el. equipment	Ruhstrat	Göttingen (Ni)		1945
444		el. cable plug				
444		electronics	Phywe, Imperial	Göttingen (Ni)		
445		gas-mask part				
445	Ky	RG34 cln. kit	Kyffhäuserhütte (Paul Reuss)	Artern (Th)		1937
445	fsx	flrgrn. hol.	Albin Scholle	Zeitz (SA)		1940 – 42
445	fsx	P38 hol.	Albin Scholle	Zeitz (SA)		1941 – 43
445	jrt	metal ammo box	Opel & Kühne	Zeitz (SA)		1942
446	gyp	horse leather equipment	Hansen & Braun	Solingen (NW)		1944
446	eyp	MP40 – MP44 pouch	Rudolf Vordemberge	Osnabrück (Ni)		1944
448		tellermine 35				
448		fuse 29	Richard Rinker			1940
448	ewy	wooden box for threading tools	Meller Möbelfabrik	Melle (Ni)		1944
449	zs	silencer 7X				1938
453		RG34 cln. kit	G. Appel	Spandau (B)		1937
454	eoy	art. fuse	“Messap”	Hamburg-Langenhorn		
455		horse leather equipment	J. M. Eckart	Ulm (BW)		1936
455			Hans Römer	Neu-Ulm (By)		1937
455		pouch, first aid	K. Hollmann			1937
455		horse saddle	SA			1938
455			Henseler und Co.	Neu-Ulm (By)		1939
455	BB	MKb42 mag.				1942
455	an	steel box	C. Beuttenmüller & Cie	Bretten (BW)		1943

455	faa / quk	8,8 cm case	DWM	Werk Karlsruhe (BW)		1943
455	fqq / kzo	8,8 cm case	Dillinger Hüttenwerke	Dillingen (SI)		1943 – 44
456	gaq	flrqn. hol.	Otto Stephan	Mühlhausen (Th)		1942 – 43
463	avt	2 cm case	Silva Metallwerke	Magdeburg – Neustadt (SA)		1944
467		fuse, box for fuses				1938 – 39
468		horse leather equipment	Hugo Diesener	Werningerode (SA)		
468	P414	2 cm case	Silva-Metallwerke	Magdeburg (SA)		1940
468	avt	2 cm case?	Silva-Metallwerke	Magdeburg (SA)		1942
468	avt	Flak 8,8 case	Silva-Metallwerke	Magdeburg (SA)		1942
469	euh	rifle grenade launcher sight	Meinel-Scholer	Klingenthal (Sn)		
470		vehicle	Stoewer-Werke	Stettin (PL)		1940
472	bdr	telephone equipment	R. Ehrhardt	Pössneck (Th)	see 86	1941
476		gas-mask				
480		oil-can				
480		M24 stick grenade				1940
480	gqm	K98k buttplate for Mauser B	Loch & Hartenberger	Idar-Oberstein (RP)		1944
480		barrel for a K98k dou				1944
483	cau	ZS/30 fuse	Kodak, Dr.Nagel-Werk	Stuttgart (BW)		1944
486		MG band box				
488	ayd	2 cm mag.	Fr. Stübgen & Co.	Erfurt (Th)		
488	gyu	art. fuse	Michera, Gebr.	Stare-Tura (SK)		1943
491		fuse container				
491	bpr	G41(M) buttplate	Johannes Grossfuss	Döbeln (Sn)		1941

491	brg	G41(M) buttplate	H.W.Schmidt	Döbeln (Sn)		1942
492		clock & wooden stand	Kienzle Uhren- fabriken			1937
494	auf	art. fuse	Metall Guss u. Presswerk	Nürnberg (By)		1943 – 44
495		panzer- büchse 39 part				
495	sxk	2 cm mag.				
495	567	2 cm Flak	Havelwerk	Brandenburg		1940
496	P131	3,7 cm pri- mer	DWM	Berlin-Borsig- walde (B)		1939
497	bpr	MG34 parts	J. Grossfuss	Döbeln (Sn)		
497	963	box for MG bands	J. Grossfuss	Döbeln (Sn)		1940
497	brg	K98k butt- plate	H. W. Schmidt	Döbeln (Sn)		1940 – 43
497	bpr	G41(W) buttplate	J. Grossfuss	Döbeln (Sn)		1940
497	bpr	K98k parts	J. Grossfuss	Döbeln (Sn)		1942
497	bpr	first aid kit	J. Grossfuss	Döbeln (Sn)		1944
500		RG34 cln. kit	G. Appel	Berlin- Spandau (B)		1937 – 38
502	fbu	part of V2 rocket	MABAG	Nordhausen (Th)		
504		ear phone				
504		electronic switch	Mikrofona, Gebr. Knotek	Prag (CZ) or Meseritz (PL)		1943
504		radio	Blaupunkt	Berlin		1943
506		field phone				
506		electronics	C. Lorenz AG	Berlin		
506		electronics	Telefunken	Riga (LV)		
509		8,8 cm Flak primer	Rheinische Metallwarenfab- rik	Sömmerda (Th)		1938
512	cr	cartridge gauge	Zander & Opitz	Berlin		1944
513		MP38u.40 mag. Po.	A. Grüll	Wien (AT)		1941
513	gaq	MP44 mag. Po.	Otto Stephan	Mühlhausen (Th)		1944
513	ojx	MP44 mag. Po.	Dt. Kunstleder- werke	Wolfgang, Hanau (He)		1945
514	qwm	3,7 cm fuse				1945

515		horse leather equipment				
517		radio tube	Telefunken		see 617	
517	dpv	art. fuse	Zeiss-Ikon	Dresden (Sn)		1944
518		British Enfield spike bayonet			marked W8A 518	
519		boatman pipe	D.R.G.M-			
519	cof	MG42 tool	Carl Eickhorn	Solingen (NW)		
519	cof	MG42 part	Carl Eickhorn	Solingen (NW)		
519	cqh	98 bay.	Clemen & Jung	Solingen (NW)		1941 – 44
519	ddl	98 bay.	Josua Corts	Remscheid (NW)		1942 – 43
519	agv	98 bay.	Berg & Co.	Solingen (NW)		1942 – 44
519	asw	98 bay.	F. u. K. Hörster	Solingen (NW)		1942 – 44
519	cof	98 bay.	Carl Eickhorn	Solingen (NW)		1942 – 44
519	ffc	98 bay.	F. Herder	Solingen (NW)		1942 – 44
519	fnj	98 bay.	A. Coppel	Solingen (NW)		1942 – 44
519	fze	98 bay.	F. W. Höller	Solingen (NW)		1942 – 44
519	cvl	98 bay.	WKC	Solingen (NW)		1942 – 44
519	clc	98 bay.	Rich. Herder	Solingen (NW)		1942 – 44
519	crs	98 bay.	P. Weyersberg	Solingen (NW)		1942 – 45
519	cul	98 bay.	E. Pack	Solingen (NW)		1943 – 44
519	pyy	98 bay.	Berg & Co.	Solingen (NW)		1944
519	sgx	98 bay.	F. u. K. Hörster	Solingen (NW)		1944 – 45
519		pocket knife	Carl Eickhorn	Solingen (NW)		
522		Phänomen Granit	August Nowack	Bautzen (Sn)		1938

		Kübel- und Krankenwagen				
522		motorcycle	Phänomen-Werke	Zittau (Sn)		1941
531		Blitz truck	Opel	Brandenburg		1937
530		3,7 cm round				
533		wire-cutter				
533		paramedic bag	Karl Bollmann	Tüttlingen (BW)		1939
533	byd	gas-mask	Drägerwerk	Lübeck (SH)		1938, 44
533	bwz	horse gas-mask	Auer-Gesellschaft	Oranienburg (Bb)		1943
536		Rg34 cin. kit	Mundlos AG	Magdeburg (SA)		1937 – 38
537	ddl	98 bay.	Josua Cortis	Remscheid (NW)		1943 – 44
538		tape measure				1939
538	cme	protractor	Wichmann	Berlin		
538		antenna parts, optical tripod	Wichmann			
538	cme	meas. instrument	Wichmann	Berlin		1941
540		mine fuse	RR 507	Bielefeld (NW)		1939
540		MG band box	WS			1938 – 39
542		petrol can				
542	jyb	scope can, metal container	Wessel & Müller	Luckenwalde (Bb)		
542	cjs	2 cm magazine	Kallenbach	Luckenwalde (Bb)		
542	gcb	tape measure	Adolf Grohmann & Sohn	Würbenthal Süd (CZ)		
542		oil can	KMF			
542		bakelite box for fuse	Richard Rinker			1939
543	bxz	optical part	Askania-Werke AG	Berlin – Mariendorf (B)		1940
543	nbe	panzer-schreck	HASAG	Tschenstochau (PL)		

544	bzp	art. fuse	A. Gautier	Calm- bach/Enz (BW)		1942
547	jzb	barbed wire cutter	Carl Mesenhöl- ler	Remscheid- Hasten (NW)		
547		98 bay.	Dürkopp-Werke			1938 – 39
547		pioneer pouch	-----udbrask	---eldt		1940
548		sapper igni- tor	Siemens			1938
556		cradle bea- ring				
556	P397	7,5 cm ammo	Meta Metallwerk	Arnstadt (Th)		1939
556	dwx	fuse	Schmöle & Co.	Bad Zungen (Th)		1944
556	wa	7,5 cm ammo	Hugo Schneider	Leipzig (Sn)		1944
556	eeu	MP44 stock part	Westthüringer Metallfabriken	Schmalkal- den (Th)		1944 – 45
560		fuses & me- tal box for fuse	Richard Rinker			1939
562		handgre- nade part				
568	gcq	folding shovel	Heinrich Jung & Sohn	Halver (NW)		1941
571		field phone				1937
573		pliers	Ha-So			
577		el. equipm.	Siemens & Halske	Berlin		1938, 42
579	P94	8,8 cm ammo	Kabel und Me- tallwerk Neumeyer	Nürnberg (By)		1938
580		ohm meter	Hartmann & Braun			
581	pzc	2 cm fuse				
582		handgre- nade				
582		gas-mask part	Haller			1939
584		el. equipm.	Seibt	Berlin		
584		el. equipm.	Baco, Linke	Berlin		
584		el. equipm.	Varta, Pfalzgraf	Berlin		
584		ear phone	F. L.			1943
584		el. equipm.	B & G			1944

584		lead collector				1944
586		el. equipm.				
586		telephone	NT			
588			org. stamp exists			
588		el. cable				1939
588		hand siren	Helin	Hagen-Vorhalle (NW)		1939
589		airfilter	Delbag	Berlin		
591		trucks, cars	Daimler-Benz	Sindelfingen (BW)		1940
594		igniter				1939
595	Rh.S	grenade parts	Rheinmetall-Borsig	Sömmerda (Th)		1939
596	exs	2 cm fuse	Sils van de Loo	Hameln (Ni)		1943
597	auj	art. fuse	Monheimer Ketten u. Metallwaren-industrie	Monheim (NW)		1943
597	edb	art. fuse	Matthias Hohner	Trossingen (BW)		1943
598		truck	Hansa	Bremen		1938
600	gld	2 cm fuse	Butzke-Werke	Berlin		1943
601	bow	ammo box – steel	Dresbach & Cie	Halver (NW)		1940
604		telephone				
606		measuring tool				
606		18 mm tool				
606		pliers	H			
606		fork-spoon				
607		VZ24 assembly	Waffenw. Brünn	Bystrica (SK)		1940
607		VZ24 rew. Bay.	Waffenw. Brünn	Bystrica (SK)		1940
607	P14A	3,7 – 4,7 – 10 and 15 cm ammo	Waffenw. Brünn	Bystrica (SK)		1939 – 40
607	14A	MG34 bolt	Waffenw. Brünn	Bystrica (SK)		
611		RG 34 ch. kit				
612		MG34 trigger				
613		FN 10/22 pistol	F. N.	Lüttich (BE)	Tennert	1941
613			F. N.	Lüttich (BE)	Tennert	sep40 – apr41

615	fsc	field phone	Mikrofona	Meseritz (PL)		1941
617		radio				1939
617		electronics	Telefunken	Berlin		
617		electronics	Telefunken	Erfurt (Th)		
618		el. plug				
618		field phone	Mix & Genest	Berlin		1939, 40
618		field phone	ERKA	Berlin		1942
618	P315	panzerbühchsepatrone	Märkisches Walzwerk	Strausberg (Bb)		1939
622	bzz	2 cm fuse	I. G. Farbenindustrie	München (By)		1943
623				Radom (PL)		
623		P35(P) pistol	Inspected at Steyr			
623		P35(P) hol.				
623	660	K98k	Steyr-Daimler-Puch	Steyr (AT)		1939
623	660	G29/40	Steyr-Daimler-Puch	Steyr (AT)		1939 – 40
623	bnz	K98k, MP40,	Steyr-Daimler-Puch	Steyr (AT)		1940 – 45
623	bnz	MG34	Steyr-Daimler-Puch	Steyr (AT)		1940 – 41
623	bnz	MP40	Steyr-Daimler-Puch	Steyr (AT)		1941 – 44
623		flr gn. hol.	Carl Budischowsky	Wien (AT)		1942
623	bnz, swj	MG42	Steyr-Daimler-Puch	Steyr (AT)		1942 – 45
623	Bnz, swj	MP44	Steyr-Daimler-Puch	Steyr (AT)		1944 – 45
627	blv	art. fuse	Erhard Schmidt	Bromberg (PL)		1943 – 44
628		leather for spade				
634		fuse for tellermine	Richard Rinker			1940
637	aqs	mortar fuse	Süddeutsche Armaturenfabrik	Heidenheim (BW)		1943
637	cxx	Flak 8,8 cm part	J. M. Voith	Heidenheim (BW)		1944
640	dud	wooden ammo box	Fritz Seitz	Würzburg (By)		1941
640	bmd	horse saddle	Max Müller	Nürnberg (By)		1941 – 42

640	erg		A. Döppert	Kitzingen (By)		1941 – 42
640			H. D.			1942
640	dug	box for panzerfaust	Junge & Jordan	Ostheim/Rhön (By)		1944
641	dlu	P08 hol.	E. Lüneschloss	Solingen (NW)		1941, 43
641	dlu	P38 hol.	E. Lüneschloss	Solingen (NW)		1943 – 45
641		horse shoe key	A.P.			1943
641	gyr	wire cutter	Hugo Lindner	Solingen (NW)		1941, 43
641	hec	ZB26 mag.	Steinbach & Vollmann	Heiligenhaus bei Velbert (NW)		1942
642	dwc	K98k butt-plate	Boehme	Minden (NW)		
642	hyo	MG42 barrel chrome	Heinrich Reining	Düsseldorf (NW)		
647	brc	2 cm Flak magazine	Fr. Weber & Co.	Berlin		
647	brc	box for MG bands	Fr. Weber & Co.	Berlin		1941
647	brc	MG34 barrel container	Fr. Weber & Co.	Berlin		1943
648	P315	8 mm AT ammo + 2 cm ammo	Märkisches Walzwerk	Potsdam (Bb)		1939
652		pocket lamp	Pertrix			
655	Mauser	M34 pist.	Mauser Werke	Oberndorf (BW)		1939 – 41
655	42	P08	Mauser Werke	Oberndorf (BW)		1939 – 41
655	42	K98k	Mauser Werke	Oberndorf (BW)		1940
655		1935A French pist. (first 550)	S. A. C.M. (see 251)	(FR)		1940
655		98 bay.	J. Sch.			1940 – 41
655		98 bay.	J. Sch.			1940 – 41
655	Mauser	G41(M)				1941

655	Mauser	HSc pist.	Mauser Werke	Oberndorf (BW)		1941
655	byf	K98k, P08	Mauser Werke	Oberndorf (BW)		1941
656		7,5 cm primer				1939
659		truck	Steyr Sauer Werke	Wien (AT)		1944
660		gear for trailer	B V V			
662	hay	wooden box	Chr. Oestreich	Neu Isenburg (He)		1943
665		aluminium piece	A. Deichsei			
665	P94	8,8 cm Flak case	Kabel-u. Metallwerke Neumeyer	Nürnberg (By)		1936
665	P456	3,7 cm Flak ammo	Metall und Eisen	Nürnberg (By)		1939 – 40
668		box for MG bands	Merz Werke	Frankfurt (He)		1940
668		leather for spade	Seeger	Offenbach /Main (He)		1940
668	jhz	cover for K98k rear sight	Jean Weipert	Offenbach /Main (He)		1941
668			R. Reinhardt	Pössneck (Th)		1941
668		P27(t) hol.				
668	gfg	flrqn. hol.	Carl Hepting	Stuttgart (BW)		1942
668	hlv	Brng. HP hol.	Maury & Co.	Offenbach (He)		1943 – 44
668	jhz		Jean Weipert	Offenbach (He)		1941 – 42
668	gjh	P08 hol.	R. Conte	Offenbach (He)		1942
668	gyb	sling for MG	W. F. Bauer	Offenbach (He)		1943
668	gjj	horse leather equipment	Karl Seeger	Offenbach (He)		1943 – 44
668	hlv	P38 hol.	Maury & Co.	Offenbach (He)		1943 – 44
668	gjh	horse leather equipment	R. Conte	Offenbach (He)		1940 – 42, 44

669			org. stamp exists			
673			org. stamp exists			
677		amperemeter	Siemens			
683		Truck	Steyr	(AT)		1940
687	eeo	2 cm case	DWM	Posen (PL)		1943
691		8 cyl. Horch	Auto Union	Siegmars (Sn)		1940
691			Daimler-Benz	Sindelfingen (BW)		1940
700	P	2 cm ammo	Polte	Magdeburg (SA)		1939
700	P	5 cm, 8,8 cm ammo	Polte	Magdeburg (SA)		1939
700	P, aux	panzerbüchsepatrone 7,92x94	Polte	Magdeburg (SA)		1939 – 41
702	fcc	gas-mask filter	Hermann Nier	Beierfeld (Sn)		1942
703	ddv	battery box	Oculus	Berlin		
704		7,62 cm shell for foreign guns				
705	kpz	wooden box for ammo	August Förster	Georgswalde (CZ)		1943
706	jvk	tool	Curt Holzberger	Dresden (Sn)		
706	jwa	MP44 mag. pouches	Moritz Stecher	Freiberg (Sn)		
706		tool I.I.G.18				
706		horse leather part	P. Hofmann			
706	jwa	horse saddle	Moritz Stecher	Freiberg (Sn)		1943 – 44
706		P08 hol.	F. Grosse	Dresden (Sn)		1939
706		2 cm Flak wooden ammo crate	O. B.			1939
706		P08 hol., tool pouch	Carl Heinichen	Dresden (Sn)		1939
706	agp	MP40 loader	Eisenwerke G. Meurer	Tetschen (CZ)		1940
706		gas mask part	Eschebach	Radeberg (Sn)		1940

706	gxy	horse leather equipment	Gebr. Klinge	Dresden (Sn)		1942
706	eqb	2 cm Flak mag.	Böhme & Henne	Dresden (Sn)		1942
706	joa	P38 hol.	Carl Heinichen	Dresden (Sn)		1941 – 43
706	gxy	P38 hol. horse leather equipment	Gebr. Klinge	Dresden (Sn)		1941 – 45
706	cea	P08 hol.	H. Thiele	Dresden (Sn)		1942
706	cea	tool bag for MG34	H. Thiele	Dresden (Sn)		1942
706	jvd	P38 pist. mag.	Erste Nordböhmische Metall.w.f.	Nieder-Einsiedel (CZ)		1942 – 45
706	jwa	P38 hol.	Moritz Stecher	Freiberg (Sn)		1941, 42, 44, 45
707		Luftwaffe condenser	Lorenz			
707	joa		Carl Heinichen	Dresden (Sn)		1934
707	S/270	3,7 PAK ammo	H. Diehl	Nürnberg (By)		1936
707		leather box for Kienzle desk clock				1940
709		12,5 kg explosives				1941
710	azg	MG band parts	Siemens-Schuckert	Berlin		1941
711		8,8 cm grenade part				
715		98 bay. throat spring on Elite Diamond bay.	Langer	Chemnitz (Sn)		1941
715	j	art. fuse	Langer	Chemnitz (Sn)		1943
716	RhS270	art. grenade part	Rheinmetall	Sömmerda (Th)		1940
717	15A	15 mm ammo	Waffenwerke Brünn	Wsetin (CZ)		1940
717		7,5 cm Dutch case				1940

721		gas-mask				
721	lze	rifle grenade launcher	Friedrich & Franz Vasek	Prag (CZ)		
721		K98k sling	K. Berger	Prag (CZ)		
721		snow goggles	MENDRSIO			1940
721		K98k sling	von Waldow	Prag (CZ)		1942 – 43
721		CZ27 pist. hol.	RBNr 0/1250/0011	Kreis Königgrätz (CZ)		1943 – 44
721		PPK pist. Hol.	RBNr 0/1250/0011	Kreis Königgrätz (CZ)		1945
721	skl	K43 pouch, leather pouch, leather for folding shovel				1945
727		fork-spoon				
727	jhg		G. Genschow	Altstadt-Hachenburg (RP)		
727		mine tool				
727		pliers				
727		motorcycle tool	Tecalemit			
727	97E	MG mount tool				
727		bakelite lantern				
727	745	MG loader	Rudolf Stähely	Wuppertal (NW)		
727	hgj	MG mount tool	Carl Kirchmann	Heiligenhaus (NW)		
727	epd	field spade	Beckersche Werkzeugfabriken	Remscheid-Vieringhausen (NW)		
727		P38 hol.	Karl Böcker	Waldbröhl (NW)		1938 – 40
727		P38 hol.	Joseph Moll	Goch (NW)		1939 – 40
727		P08 hol.	Karl Barth	Waldbröhl (NW)		1939
727		MG34 tool bag	Karl Barth	Waldbröhl (NW)		1939

727		horse shoe tool	H – logo			1939
727		P08 hol.	Karl Böcker	Waldbröhl (NW)		1939 – 40
727	dkk	P38 hol.	F. Offermann	Bensberg (NW)		1938 – 41
727		horse hoof cleaning tool	Gräwiso			1940
727		first aid pouch	Hansen & Braun	Solingen (NW)		1940
727		P39(t) hol.	Joseph Moll	Goch (NW)		1940
727	cxb		Joseph Moll	Goch (NW)		1940 – 42
727	dlu, DLU		E. Lüneschloss	Solingen (NW)		1940 – 41
727	eqf	P38 hol.	Karl Böcker	Waldbröhl (NW)		1941
727	jhg	Sauer mod. H holster	G. Genschow	Altstadt-Hachenburg (RP)		1941
727		wire cutter	VBW			1940
727	epd	wire cutter	Beckersche Werkzeugfabriken	Remscheid-Vieringhausen (NW)		1941
727	gyr	wire cutter	Hugo Lindner	Solingen (NW)		1941
727		pioneer saw	E.Winterhoff & Co	Remscheid (NW)		1940 – 41
727	hec	ZB26 mag.	Steinbach & Vollmann	Heiligenhaus bei Velbert (NW)		1942
727	hec	MG42 bipod	Steinbach & Vollmann	Heiligenhaus bei Velbert (NW)		1943
727	lms	7,5 cm cannon part	Theodor Kiepe	Düsseldorf (NW)		1943
728	fyd	3,7 cm primer	Skoda-Werke	Brünn (CZ)		1942
729		7,5 cm Vickers Flak fuse	Tavaro	Genf (BE)		1941
731		8 cm mortar				1941
732	bmv	art. fuze	Rheinmetall-Borsig	Sömmerda (Th)		1940 – 41
735		sharpening steel				1942

737		cable re-winder	Dresbach & Cie	Halver (NW)		1941
737		hand-siren				
739	ets	gas-mask container	Heckler, Metall-warenfabrik	Aue (Sn)		1941
741		microphone				1943
742	S/27	K98k	Erma und Geipel	Erfurt (Th)		1935
745		radio tube	Valvo	Hamburg		
745		radio battery	Otto Gross	Hamburg		1942
747		el. cable plug	F. G. Neptun			1939
749	duv	gunners tool	Berlin-Lübecker Maschinenfabriken	Lübeck (SH)		
749	337	K98k	Berlin-Suhler Waffenwerke			1940
749	337	K98k	Gustloff-Werke	Weimar (Th)		1940
749	bcd		Gustloff-Werke	Weimar (Th)		1941 – 45
750	eqr	P08 hol.	G. Passier	Hannover (Ni)		1940
750		lamp (bake-lite, carbide)				
750		test kit				
750	hvf	MG34 stock	Fagus-Werk	Alfeld (Ni)		
750		test device				
750	cww		Carl Weiss	Braunschweig (Ni)		1937, 39 – 42
750			J	Braunschweig (Ni)		1939
750		P08 hol.	Carl Weiss	Braunschweig (Ni)		1939 – 40
750	eqr		G. Passier	Hannover (Ni)		1939, 41 – 42
750		P38 hol.	Carl Weiss	Braunschweig (Ni)		1940
750	cww	P38 hol.	Carl Weiss	Braunschweig (Ni)		1941 – 42
750	eqr	MP40 leather mag. Pouch	G. Passier	Hannover (Ni)		1942
750	arr	RG34 cln. kit, metal ammo box	Braunschweigische Blechwarenfabrik	Braunschweig (Ni)		1941 – 42
752		belt bag 34				

754		R12 motorcycle	BMW	München (By)		1941
757	logo	P38 hol.	Christoph Neuner	Klagenfurt (AT)		1941
757		P39(t) hol.	Christoph Neuner	Klagenfurt (AT)		1940
757	bym	98 bay.	Maschinenhaus der Büchsenmacher	Ferlach, Kärnten (AT)		1941
758	kqd	fuse	Gebr. Junghans	Exbrücke; Elsass (FR)		1943
760	ajm	V2 fuel tank valve	Albert Knauth Pumpenfabrik	Breslau (PL)		
760		horse leather equipment	Landes-lieferungs Genossenschaft, Niedersachsen	Hannover (Ni)		1940
763		steel box				
763		R75 motorcycle	BMW	Eisenach (Th)		1942
763	P397	2 cm blank ammo	Meta Metallwerk	Arnstadt (Th)		1940
764		quartz	Zeiss	Jena (Th)		
764		tool	NSU	Neckarsulm (BW)		
765	bab	MG wooden stock	Wilhelm Sedlbauer	München (By)		
765		box for MGZ 34 (Voigtländer)				
765		map pouch	Schambach & Co.	Berlin?		1942
766	aeq	art. fuse	Bartos u. Co.	Caslau (CZ)		1943
767	eej	2 cm case	Märkisches Walzwerk	Strausberg (Bb)		1942, 44
770		electronics	Lorenz, AEG, Linke	Berlin		
770		hook	MH ?			1941
770		field phone				1941
770		siren	Elektror	Esslingen (BW)		1944
770	new	dynamo	AEG	Berlin		1944
772		carbide lamp				

775	dkf	Flak 8,8 tool	A. Hering	Neustadt (Sn)		
777	S/155	98 bay.	E. u. F. Hörster	Solingen (NW)		1935
778		MG34 cleaning fluid can				
778		bakelite box				
779	ksz	Flak 8,8 mount	Osmag Ober- schlesische Maschinen u. Waggonfabrik	Ein- trachtshütte (PL)		1944
780	bwo		Rheinmetall- Borsig	Düsseldorf (NW)		
780		Flak optik				
780		carbide lamp				
780	amp	5 cm ammo	Dortmund-Ho- erder Hütten- verein	Dortmund (NW)		1944
781		stirrup				
787	eej	2 cm fuse	Märkisches Walzwerk	Strausberg (Bb)		1943
788	gxy		Gebr. Klinge	Dresden (Sn)		1939
788			Hengeler und Co.	Berlin		1939
788		P08 hol.	Hans Römer	Neu-Ulm (By)		1940
788	bml	P08 + P38 hol.	Hans Römer	Neu-Ulm (By)		1941, 43, 44
788	bml	leather strap	Hans Römer	Neu-Ulm (By)		1941
788	cpa	metal box	Ostertag-Werke	Aalen (BW)		1941
788	dyo	pouch	J. M. Eckart	Ulm (BW)		1941
788	dyo	leather strap	J. M. Eckart	Ulm (BW)		1941
789	fcv	transport wagon, 10 cm mortar	Schmidt, Kranz & Co.	Nordhausen (Th)		1940
789	fcv	art. fuse	Schmidt, Kranz & Co.	Nordhausen (Th)		1943
795		P38 hol.				
798		electronics	Kapsch u. Söhne	Wien (AT)		
801		electronics	Homy, Minerva	Wien (AT)		
801		electronics	Valvo, Tungsram	Wien (AT)		

801	bow	cartridge box 36	Dresbach & Cie	Halver (NW)		1941
806	aty	8,8 cm ammo	Maschinen für Massenverpackung	Lübeck-Schlutup (SH)		1941
808		MG34 barrel				
809	jua	8,8 cm igniter	Danuvia	Budapest (HU)		1943 - 44
812		art. fuse				1941
813		PAK ammo				
813	cpr	art. fuse	Hasse & Wrede	Berlin		1944
815	cgv	tool for horseshoe	Stubair Kleisen	Fulpmes/Tirol (AT)		
815	bnz	RG34 cln. kit parts	Steyr, Werk Steyr	Steyr (AT)		
815	bnz	blank fi. adapt. MP40	Steyr, Werk Steyr	Steyr (AT)		
815	98E	Mg34 bipod	Steyr, Werk Steyr	Steyr (AT)		
815		cable drum	Prestag	Berlin		1936
815	Ky	RG34 cln. kit				1940
815	98E	MP40 mag.	Steyr, Werk Steyr	Steyr (AT)		1940 - 42
815	98E	MP40 mag. Loader	Steyr, Werk Steyr	Steyr (AT)		1941
815	kur	MP40 mag. and loader	Steyr, Werk Graz	Graz (AT)		1942 - 44
815	kur	MG42 case extractor				
815	kur	MKb42, MP44 mag.	Steyr, Werk Graz	Graz (AT)		1943 - 45
815		MG42 tool	Gustloff-Werke	Weimar (Th)		fg = 1943
815		MG tool pouch				1944
815	tbv	MP44 mag				1945
818		remote connection device				1942
820		spoon - fork	VDNS			1941
821		kable holder	AUI			1940
822		motor cycle	Phänomen	Zittau (Sn)		1941

822		MG belt	Heinrich Hülter jun.	Iserlohn (NW)		1941
823		P35(p)	Fabryka Broni	Radom (PL)		1939 – 44
824	jdq	metal ammo box	Schmiedeberger Metallwarenfabrik	Schmiedeberg, Dresden (Sn)		1943
831	aqs	art. fuse	Süddeutsche Armaturenfabrik	Heidenheim (BW)		1943
834			Nürnberger Schraubenfabrik	Nürnberg (By)		1941
834		chisel				1941
836		electronics	NSF, Br&St, TeKaDe	Nürnberg (By)		
836		ampere meter				
836	va	2 cm case	Kabel- und Metallwerke Neumeyer	Nürnberg (By)		1941 – 44
836	wg	2 cm case	HASAG	Altenburg (Th)		1944
836		radio set				1943
836		electronic meter				1944
837		MP40 mag. parts				
838	ck	8,8 cm case	Kabel- u. Metallwerk Neumeyer	München (By)		1943
839	a.s.w.	PaK 38 sight	Arno Wallpach	Salzburg (AT)		1942
841	clc	sapper tool	Richard Herder	Solingen (NW)		1942
843	ayd	2 cm mag.	Fr. Stübgen & Co.	Erfurt (Th)		
845	eeu	K98 winter trigger	Werkzeug- u. Metallwarenfabriken	Schmalkalden (Th)		
847	cvk	leather equipment, horse shoe pouch	Koch & Benning	Wuppertal-Ei-berfeld (NW)		1941
849	awl	art. fuse	Sils van de Loo & Co.	Fröndenberg (NW)		1944
852	va	2 cm case	Kabel – und Metallwerke Neumeyer	Nürnberg (By)		1944

853		bakelite box				
857	S270	art. fuse	Heinrich Diehl	Nürnberg (By)		1940
857	awl	art. fuse	Sils van de Loo & Co.	Fröndenberg (NW)		1941
858		radio	Philips-Valvo	Aachen (NW)		
868	ark	2 cm Flak38 part	Benteler Werke	Bielefeld (NW)		1942
869	gct	K98 grenade launcher	Fischer & Krecke	Bielefeld (NW)		
869	kyq	wooden ammo box	August Siekmann	Löhne (NW)		
869		diving helmet	Friedrich Flohr	Kiel (SH)		
869		folding shovel, leather for	Paul Kupper	Berlin		1940
869	gca		Mylau GmbH	Mylau (Sn)		1941
869	gut	P08 hol.	Walter Schürmann	Bielefeld (NW)		1941 – 42
869	fkx	P38 hol.	G. Sudbrack	Bielefeld (NW)		1943 – 44
871	cob	cannon part	Netzschkauer Maschinenfabrik	Netzschkau (Sn)		
873	ccv	art. fuse	Rodi & Wienberger	Pforzheim (BW)		1943
873	btj	art. fuse	Kollmer & Jourdan	Pforzheim (BW)		1943
873	jzj	fuze for 8,8 cm Flak	Albert Irion	Stuttgart-Münster (BW)	maker not certain	1944
874		pliers				
878	cpj	ammo metal box	Havelwerk	Brandenburg		1941
879	emr	horse saddle, K98 sling	Adalbert Fischer	Guttstadt (PL)	=B79 ? =B99?	1941
882	cpj	rifle grenade launcher, 7,92x94	Havelwerk	Brandenburg		1941
883		98 bay.	WKC	Solingen (NW)		1939
883		98 bay.	F. Herder	Solingen (NW)		1940

883		98 bay.	F. W. Höller	Solingen (NW)		1940
883		98 bay.	Berg & Co.	Solingen (NW)		1940
883		98 bay.	A. Coppel	Solingen (NW)		1940
883	cqh	98 bay.	Clemen & Jung	Solingen (NW)		1940 – 41
883	crs	98 bay.	P. Weyersberg	Solingen (NW)		1940 – 41
883	cul	98 bay.	E. Pack	Solingen (NW)		1940 – 41
883	ddl	98 bay.	Josua Cortis	Remscheid (NW)		1940 – 42
883	asw	98 bay.	E. u. F. Hörster	Solingen (NW)		1940 – 42
883	cof	98 bay.	Carl Eickhorn	Solingen (NW)		1940 – 42
883	clc	98 bay.	Rich. Herder	Solingen (NW)		1940 . 41
883	ffc	98 bay.	F. Herder	Solingen (NW)		1941
883	cvl	98 bay.	WKC	Solingen (NW)		1941
883	fnj	98 bay.	A. Coppel	Solingen (NW)		1941
883	fze	98 bay.	F. W. Höller	Solingen (NW)		1941
883	agv	98 bay.	Berg & Co.	Solingen (NW)		1941, 43
885		outboard engine	Audi	Zwickau (Sn)		
885	rhq	el. motor				1944
886		fieldphone				
886		gauge				
887	gmh		Carl Steppuhn	Elbing/Frisches Haff (PL)		1942
898		fieldphone, battery charger				1941
900		binoculars 6x	Russian marked FLA			
900	ejo	el. equipm.	Preßwerk AG	Essen (NW)		1944
900		fieldphone	Vereinigte Bayrische Telephonwerke	München (By)		1943

903		el. equipm.	Ostmarkwerk Prag	Prag-Gbell (CZ)		
904		el. equipm.	C. Lorenz AG	Mühlhausen (Th)		
905		el. equipm.				1943
907		3,7 cm ammo				1942
910	wa	2 cm fuse	Hugo Schneider	Leipzig (Sn)		1941 – 42
912	frk	art. fuse	Sigmund Pumpen	Olmütz-Lut- tein (CZ)		1942
916	jeo	tank peri- scope	Vorrichtungs- & Gerätebau	Berlin		1944 (?)
918		leather for AKAH made PP hol.	AKAH = Al- brecht Kind	Hunstig (NW)		
918		P08 hol.	Hans Römer	Neu-Ulm (By)		1936
918	bml		Hans Römer	Neu-Ulm (By)		1941 – 42
918	gxy	pist. hol.	Gebr. Klinge	Dresden (Sn)		1942
919		field phone				1941
920		folding rule	Uusta ?			
920	jor	Brng. HP hol.	A. Muzik	Wien (AT)		1941
920		leatherbelt flap	Friedrich Keller	Oberstein (RP)		1936
920	bpy	wooden ammo box	Hofmann & Czerny AG	Wien (AT)		1940
920	cgu	P38 hol.	Stolla's Söhne	Wien (AT)		1940 – 41
920	cgu	P08 hol.	Stolla's Söhne	Wien (AT)		1941
920	clg	P08 hol.	Ernst Melzig	Liegnitz (PL)		1942
920	cey	P08 hol.	Karl Bu- dischowsky	Wien (AT)		1942
920	cey	P38 hol.	Karl Bu- dischowsky	Wien (AT)		1942, 44
920	dvr	Brng. HP hol.	J. Fröhlich	Wien (AT)		1942
920	cgn	Brng. HP hol.	J. Poeschl, RBNr. 0/1032/0001	Rohrbach (AT)		1942 – 44
920	cey	horse lea- ther equipment	Karl Bu- dischowsky	Wien (AT)		1944
920	fey	wooden ammo box	Anton Ketele	Wien (AT)		1944

920		jerry can	Austria	Wien (AT)		1944
924	prx	field phone	Heliowatt werke			1944
927	jkh	P08 hol.	Carl Busse	Mainz (RP)		1941 – 42
927		Brng. HP hol.	S. A. W.	München (By)		1942
927	bdt	Brng. HP hol. + other goods	Salewa	München (By)		1943 – 44
927	kot	horse leather equipment	Adalbert Fisher – for foreign contractors	Berlin		1943
927	kog	horse leather equipment	E. G. Leuner – for foreign contractors	Bautzen (Sn)		1944
929	fuq	G43 pouch	Curt Vogel, Lederwarenfabrik	Cottbus (Bb)		1944 - 45
930	gcx	P38 hol.	K. Brettschneider	Mähr-Schönberg (CZ)		1941 – 43
935	umq	art. fuse				
938	logo	P38 hol.	Christoph Neuner	Klagenfurt (AT)		1942 – 44
938	logo	HSc hol	Christoph Neuner	Klagenfurt (AT)		1942
938	logo	Star B hol.	Christoph Neuner	Klagenfurt (AT)		1942 – 44
938	logo	7,65 pist. Hol.	Christoph Neuner	Klagenfurt (AT)		1943
938	bym	98 bay.	Maschinenhaus der Büchsenmacher	Ferlach, Kärnten (AT)		1943 – 44
965	clg	HP hol.	Ernst Melzig	Liegnitz (PL)		1941
A10	wa	flare gun	HASAG	Leipzig (Sn)		
A10	wa	2 cm ammo	HASAG	Leipzig (Sn)		1941, 44
A10	wa	7,5, 8,8 cm ammo	HASAG	Leipzig (Sn)		1942
A10	wa	2 cm magazine	HASAG	Leipzig (Sn)		1943
A10	wa	MG band loader	HASAG	Leipzig (Sn)		1943
A10	wa	rifle grenade	HASAG	Leipzig (Sn)		1944
A29	clu	panzerschreck, shield for	Enzinger-Union-Werke	Mannheim (BW)		

		pan- zerscheck				
A30	dou	8,8 cm case	Waffenw. Brünn	Bystrica (SK)		1944
A39		tape meas- ure	W.H.			1940 – 41
A43		MG34 bolt part				
A44	cdm	2 cm Flak 38	Torpedo-Werke	Frankfurt (He)		
A44	cos	MP40 parts	Merz Werke	Frankfurt (He)	See 44 ?	1940 – 42
A44	cos	MP44 parts	Merz Werke	Frankfurt (He)		1942 – 45
A44		G-K43 bolt housing				1944 – 45
A44		bronze bearing				1945
A44	sup	StG44 parts	Merz Werke	Frankfurt (He)		1945
A68	adb	K98 gre- nade launcher sight	Markneukirchner Metallbearbei- tungs GmbH	Markneukir- chen (Sn)		
A68	euh	K98 gre- nade laun- cher sight	Meinel-Scholer	Klingenthal (Sn)		
A80		VZ24 rew. Bay.	Waffenw. Brünn	Bystrica (SK)		1941
A80		G24(t)	Waffenw. Brünn	Bystrica (SK)		1941 – 42
A80	dou	K98k	Waffenw. Brünn	Bystrica (SK)		1942 – 45
A80	dou	steel shell case	Waffenw. Brünn	Bystrica (SK)		1944
A80	?zs	8,8 cm case				1944
A84	agv	folding shovel	Berg & co.	Solingen-Oh- ligs (NW)		1940
A86		MP40 mag. Part				
A86		MG band box	N. A. S. ? N. S. A. ?			1940
A86	ada	MG band box	Stephan Nahr- ath	Ahlen (NW)		1943
A98	acw rqs	K43 mag.	Gold & Silber- scheideanstalt	Idar-Ober- stein (RP)		

A98	gqm	MP44 mag.	Loch & Hartenberger	Idar-Oberstein (RP)		- 45
A98	gqm	MP40 mag.	Loch & Hartenberger	Idar-Oberstein (RP)		1943 – 44
A99			org. stamp exists			
B12	dny	pouch (leather)	Karl Bollmann	Tuttlingen (BW)		1944
B17	gcx	P38 hol.	K. Brettschneider	Mähr-Schönenberg (CZ)		1941 – 43
B22		MG belt				
B30		box for vernier gauge				
B31		el. equipm.	SABA	Villingen (BW)		
B31		tank head set	BSN			1943
B31		tank head set	SABA	Villingen (BW)		1944
B31		tank head set	Dfh.f.			1945
B35	wg	2 cm ammo	HASAG	Altenburg (Th)		1945
B37	bte	MP40 mag.	Frank'sche Eisenwerke	Niederscheid (He)		1941 – 42
B39	com	art. fuse timing tool	Mafa Werk	Werdau (Sn)		
B41	acw	MG belt	Gold & Silberscheideanstalt	Idar-Oberstein (RP)		1942
B43		MP40 floorplate				
B43	aye	G-K43 mag.	Olympia Büromaschinenwerke	Erfurt (Th)		1943 – 45
B43	aye	2 cm mag.	Olympia Büromaschinenwerke	Erfurt (Th)		1944
B65		aluminium piece	A.Deichsei			
B66	clg	MP40 pouch	Ernst Melzig	Liegnitz (PL)		1943
B66	clg	P38 hol., HP hol.	Ernst Melzig	Liegnitz (PL)		1942 – 44
B71	bkg	MG belt	Gebr. Märklin	Göppingen (BW)		1941
B71	crt	gas-mask filter	Clora Atemschutzgeräte	Schwäbisch Gmünd (BW)		1943

B77		unknown pistol holster				
B79	awj	K43 mag	The Yale & Towne	Velbert (NW)		
B87	gnh	gas-mask filter	Auer	Danzig (PL)		
B87	bwz	gas-mask filter	Auer	Berlin		1943
B92 892?	Qlw	MP44 / StG44 mag.				1944 – 45
B92 892?	Gcb	K43 mag.	Adolf Grohmann & Sohn	Würbenthal Süd (CZ)		1944 – 45
B99	emr	horse saddle	Adalbert Fischer	Guttstadt (PL)	=B79 ? =879 ?	1944
C6	kfk		Dansk Industri Syndikat	Kopenhagen, (DK)	Rupert	
C6		1910/21 Bergmann rew. pist.		(DK)	Rupert	
C6		Gev. M.1889		(DK)	Rupert	
C10		K98 hand-guard				
C10	ayf	MP 40 mag. loader	Erma	Erfurt (Th)		
C10		yellow pouches for Danish pistol 10/21				
C10	ghn	MP40 mag. loader	Carl Ullrich	Oberschönau (Th)		1940
C10		assembly of Walthers K43 ?				1944 – 45
C10	eph	gas-mask container	Königs u. Bismarckhütte	Rybnik (PL)		1944
C10	ghg	MG tool	Klett und Trapp	Zella-Mehlis (Th)		
C10		MG34 bolt part				
C10	an	MP44 receiver part	C. Beuttenmüller	Bretten (BW)		1945
C11	fva	8x57JS ammo	Draht und Metallwarenfabrik	Salzwedel (SA)		1943
C11	fva	8x33 ammo	Draht und Metallwarenfabrik	Salzwedel (SA)		1944 – 45

C23	bzl	MG band box	Friedrich Siemens	Wien (AT)		
C28	hhp	canvas cover for binocular	Gebr. Männel KG, Schürzenfabrik	Falkenstein (Sn)		1943
C35		binocular case	Polskie Zakłady Optyczne – PZO	Warszawa (PL)		1939 or 1940
C39	gnh	gas-mask filter	Auer	Danzig (PL)		
C52		binocular case for SRB & STYS (Prag) binocular	Fafek	Prag (CZ)		
C86	bte	MP44 mag.	Frank'sche Eisenwerke	Niederscheid (He)		
C86	bte	MP40 mag.	Frank'sche Eisenwerke	Niederscheid (He)		1943
C97	cpp	art. fuse	Rheinmetall-Borsig	Breslau (PL)		
D20		Star mod. B pist.	Star B. Echeverria S.A.	Eibar (ES)		
D20		Astra 300 pist.	Unceta y Compania S.A.	Guernica (ES)		
D20		French Unique Kriegsmodell pist.	Manufacture D'Armes des Pyrenees, Hendaye	(FR)		
D20		MAB mod. D pist.	Manufacture D'Armes des Bayonne	Bayonne (FR)		
D29	ggm	egg hand-grenade	Annweiler Email- u. Metall Werke	Annweiler /Trifels (RP)		1943
D36	bnz	K98k barrel	Steyr-Daimler-Puch	Steyr (AT)		
D40		Ju88 part				1943
D42	jqh	case for spade	Walter Krause	Bromberg (PL)		
D57	byl	Flak 8,8 cm beech part	Andritz	Graz (AT)		1944
D68		lamp (bakelite)				
Luft 1	hhg	MG15 barrel	Rheinmetall-Borsig	Berlin Tegel (B)		1939, 41

Luft 1		P24t Czech hol.	Heinrich Krieghoff	Suhl (Th)		1940
Luft 1	hhg	MG15 barrel	Rheinmetall-Borsig	Berlin Tegel (B)		1939, 41
Luft 2		P08	Heinrich Krieghoff	Suhl (Th)		1936 – 45
Luft 2		MG drum mag.				
Luft 2		Brng.1922 hol.	Heinrich Krieghoff	Suhl (Th)		
Luft 2	fzs	flr gn.pist. FG42	Heinrich Krieghoff	Suhl (Th)		
Luft 2	fzs	servers pouch	Heinrich Krieghoff	Suhl (Th)		
Luft 2		P08 hol.	H. Eger & Linde	Schmalkalden (Th)		1936, 37, 39, 40
Luft 2		P08 – Kü				
Luft 2		MG15	Heinrich Krieghoff	Suhl (Th)		1938 – 39
Luft 2	fzs	MG15 parts	Heinrich Krieghoff	Suhl (Th)		
Luft 2	ce	Luftwaffe drilling	J. P. Sauer & Sohn	Suhl (Th)		1942
Luft 2		erdkampfvisier MG15				
Luft 4		assembled K98k	from BSW/Gustloff parts			1939 – 41
Luft 5		paratrooper gravity knife	different companies			
Luft 7	hck	Brng.1922 hol.	Georg Lerch	Berlin		1941
Luft 7	cdc	P37 Hungarian. Hol.	Kern	Berlin		1941
Luft 7	jsd	P37 Hungarian hol.	Gustav Reinhardt	Berlin		1941 – 42
Luft 7	hsy	P37 Hungarian hol.	Franz Cobau	Berlin		1942
Luft 12	jsd	P37 Hungarian hol.	Gustav Reinhardt	Berlin		1942
Luft 20	hhg	MG15 barrel	Rheinmetall-Borsig	Berlin Tegel (B)		1941
Luft 21	jsd	P37 Hungarian hol.	Gustav Reinhardt	Berlin		1942

Luft 21	jsd	Brng.1922 hol.	Gustav Reinhardt	Berlin		1943
Luft 24	ar	MG15 barrel	Mauser Werke	Borsigwalde (B)		1941
Luft 26		pouch, leather				
Luft 54	wg	1,3 cm case, 2 cm case	HASAG	Altenburg (Th)		1942 – 43
Luft 61	eds	1,3 cm fuse	Zündapp	Nürnberg (By)		1943
Luft 64	wa	MG15 double mag.	HASAG	Leipzig (Sn)		1942
Luft 65	dgl	2 cm gren.	Louis Ziegel	Sonnenberg (Th)		1945
Luft 66	edq	2 cm cartridge	DWM,	Lübeck (SH)		1942
Luft 66	tko	2 cm cartridge	DWM,	Lübeck (SH)		1945
Luft 70	edt	2 cm primer	Metallwarenfabrik	Zella-Mehlis (Th)		1942
Luft 75		2 cm case	BS			1940
Luft 84	bjl	1,3 cm gren.	Stumpp & Kurz	Vaihingen/Enz (BW)		1943
Luft 112		2 cm fuse				1942
Luft 130	exw	2 cm case	Metallwerk Holleischen	Mies (CR)		1943
Luft 165	wc	2 cm primer	HASAG	Altenburg (Th)		1942 - 43
Luft 184	efj	box for parachute	Georg Ebeling	Prenzlau (Bb)		
Luft 185	eep	2 cm primer	Brökelmann	Neheim-Hüsten (NW)		1942
Luft 190	edw	2 cm primer	Karl Metzler	Iserlohn (NW)		1942
A1223, 154		on Messerschmidt BF 109 F4/Z	Wiener-Neustädter Flugzeugwerke		Abnahme is A1223 and 154 – what does it mean?	1941

BAL 30		electronics	Telefunken	Berlin		
BAL 181		electronics	Telefunken	Berlin		
BAL 266		Junkers	Allgemeine Transportanlagen	Leipzig (Sn)		
BAL 391		teleprinter	Siemens & Halske	Berlin		
BAL 476		electronics	Seibt	Berlin		
BA 496		for Heinkel-Werke				
BAL 559		electronics	Telefunken / AEG	Berlin		
BAL 716		radio tubes	Telefunken RöW	Berlin		
BAL 750		JU 88-A5 – made under Junkers Dessau license	Arado Flugzeugwerke GmbH			1940
BAL 785		JU 87-BII	Weser Flugzeugbau	Bremen		1940
BAL 860		radio tubes	Philips, Radione	Wien (AT)		
BAL 865		radio tubes	Philips	Eindhoven (NL)		1941 – 42
BAL 957		radio tubes	C. Lorenz AG	Berlin		
BAL 1020		truck designed as a workshop	Matra-Werke	Frankfurt (He)		1940
BAL 1027		on Messerschmitt BF-110				
BA105 3 ?		for Junkers	Henschel Flugzeug-Werke	Berlin		
BAL 1641		radio tubes	Philips	Eindhoven (NL)		1942
BAL 1790		radio tubes	Philips	Eindhoven (NL)		1943 – 44
BAL 1882		radio	Sachsenwerk	Radeberg (Sn)		
BAL 1894		on Messerschmitt Bf-110	marked D. B. A. G = Daimler-Benz ?			

BAL 1948		radio tubes	Philips	Eindhoven (NL)		1942 - 43
BA495 6		on Focke- Wulf	W. u. H. Gess- ner	Berlin		
Marine M			Polte	Magdeburg (SA)		1937
Marine M I/?	ksb	6 cm signal mortar	Manufacture Na- tionale d'Armes de Levallois	Paris (FR)		
Marine M I/3	ean	3,7 cm gre- nade	LippstädterEisen u. Metallwerke	Lippstadt (NW)		1941
Marine M I/5		10,5 can- non fuse				1942
Marine M I/5	eeo	flare pistol round	DWM	Posen (PL)		1942
Marine M I/6	ksb	6 cm launching tube	Manufacture Na- tionale d'Armes de Levallois	Paris (FR)		
Marine M I/d	P	40,6 cm Adolf ammo	Polte	Magdeburg (SA)		1936
Marine M I/e		3,7 cm fuse				1940
Marine M II/1	aux	10,5 cm gun case	Polte	Magdeburg (SA)		1941
Marine M II/5	P131	10,5 cm gun case	DWM	Berlin		1940
Marine M II/5		1,5 cm case M38 Flak				1942
Marine M III/A	akb	lang basis Gerät 42H	Universelle Ci- garettenmaschi- nenfabrik J.C.Müller & Co.	Dresden (Sn)		1943
Marine M III/2		8,8 cm gun timer				1939
Marine M III/3	P397	3,7 cm Flak case	Meta Metallwerk	Arnstadt (Th)		1940
Marine M III/3	auz	20x138 cannon ammo	Polte	Arnstadt (Th)		1944
Marine M III/3	ckq	20x138 cannon case	Rasselsteiner Eisenwerk	Rasselstein / Neuwied (RP)		1944
Marine M III/5	eom	4 cm M38 cannon case	Heinrich Huck	Nürnberg (By)		1944

Marine M III/7	eds	3,7 cm fuse	Zündapp	Nürnberg (By)		1942
Marine M III/7	aue	3,7 cm case	Metall und Eisen	Nürnberg (By)		1941
Marine M III/8		HSc pist.	Mauser Werke	Oberndorf (NW)	Marine stabsingenieur Wolf	1940 - 44
Marine M III I 1	bmv	8,8 cm fuse	Rheinmetall-Borsig	Sömmerda (Th)		
Marine M III/d	brx	detonator C/38	Süddeutsche Bremsen	München (By)		
Marine M IV/2	gja	8,8 cm fuse	Nähmaschinenfabrik AG	Dresden (Sn)		1944
Marine M V/2	15A	15 mm ammo	Waffenwerke Brünn	Wsetin (CZ)		1940
Marine M p/2	gqv	grenade igniter	Pommersche Industrie-Werke	Barth (MV)		
Su4		C96 reworked "red nine" pistol	The gun was accepted by the HZA (Heereszeugamt) at Spandau and this was not a part of the WaA organization			in the Nazi time?